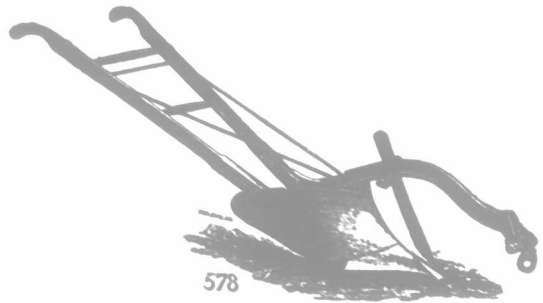


FAMOUS FLEURY PLOWS

Lightest in Draft. Steadiest in Running.



And doing the finest quality of work in the field. We are the ORIGINAL MAKERS of the FAMOUS

FLEURY NO. 21
DANDY AND NO. 13
NO. 15A. (One-horse Plow)

Do Not Take Imitations! Insist on the Genuine Fleury!

FAMOUS TINKLER WHEEL PLOWS.

THE ORIGINAL PLOW OF THIS STYLE.

Imitations are generally inferior—no less so in PLOWS than in other things.



CUSTOMERS EVERYWHERE SAY:

"There Are No Plows Like Fleury's."
Fifty Years of Plow-making.

J. FLEURY'S SONS, AURORA, ONT.

Medals and Diplomas: World's Fairs, Chicago and Paris.

The Full Percentage of Cream

Getting the full percentage of cream from milk depends as much upon the oil used to lubricate the separator as upon the separator itself. Gummy oil will cut the fine bearings of your machine, spoil its balance and waste good cream in the skim-milk pail.



STANDARD Hand Separator Oil

never gums, never rusts, never corrodes. It feeds freely into the closest bearings and insures the perfect lubrication that is essential to the free spinning of the bowl and the complete separation of cream from milk. It lessens the driving effort and lengthens the life of your separator.

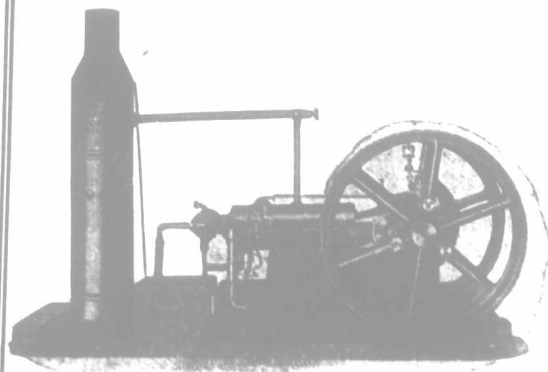
One gallon cans. All dealers. Or write to

The Imperial Oil Company, Limited

Ontario Agents: The Queen City Oil Co., Ltd.

IDEAL GASOLINE ENGINES

1 1/2 TO 40 HORSE-POWER.



Windmills,
Grain Grinders,
Pumps,
Tanks,
Water Boxes,
Concrete Mixers,
Etc., Etc.

SEND FOR CATALOGUE.

Goold, Shapley & Muir Co., Limited
BRANTFORD, CANADA.

QUESTIONS AND ANSWERS. Miscellaneous.

CROP FOR FALL GROWTH.

What would you advise me to sow on gang-plowed oat-stubble, so as to make manure and plow down this fall?
SUBSCRIBER.

Middlesex Co., Ont.

Ans.—It is doubtful if you can sow anything that will give sufficient growth to pay for the labor and expense. It depends very largely upon the openness and rainfall of the season. You might try rape.

BREACH OF CONTRACT OF HIRING—THE RULE OF THE ROAD.

A man engages with me for a year. He distinctly agrees to put in the whole year. At the end of six and one-half months, another man offers the first higher wages, and he leaves.

1. Is the man who quits me entitled to his full wage, having left in the middle of harvest?

2. Is the man who induced him to quit in any way liable?

3. When a rig or automobile comes up behind a person driving, and the man in front wishes to let it pass, should the front man draw off to the left or right side of the road, and allow the one behind to go by on his left or right hand?
R.

Ans.—1. No.

2. Yes; he is liable in damages for the injury done by inducing the man to commit a breach of his contract of hiring.

3. The front man should keep to the right, and permit the oncoming vehicle to pass on his left.

CONTINUATION CLASSES.

Wherein consists the difference between a high school and a continuation class? If rooms are set aside for pupils alone who have passed the Entrance, and these pupils are prepared and write for second-class certificates from these rooms, could such be legally classed as a high school? What certificate is demanded by the Government from a teacher who prepares pupils for their certificates?
A RECENT SUBSCRIBER.

Ans.—Districts are set apart by the County Council for the establishment of high schools, or a high school may be established in a city or in a town separated from a county. Continuation schools may be established by the County Council in an urban municipality not separated from a county, or in a township, if they are not portions of high-school districts. The establishment of continuation and high schools is subject to the approval of the Minister of Education. It would be necessary to refer to the regulations in each case in order to be made acquainted with the requirements for each.

A. H. U. COLQUHOUN,

Deputy Minister of Education.

SILO WITH CONTINUOUS DOOR.

We intend building a cement silo, 10x30, or larger, and would like to have it open, say 24 ft., with 3 ft. at top and bottom solid. Our plan is this: Six in. square oak, 20 in. apart, with headpieces every 3 ft., with 1 or 1 1/2 in. iron hoops in center of wall at each headlock. Have you or any of your subscribers a cement silo built that way, and are they satisfactory? We have wood silos built that way, with doors all the way up, and they are satisfactory. Will a 6 in. wall be thick enough, built 1 to 6 or 7, with field stone?
Haldimand.

Ans.—A cement silo can be built according to the proposed plan, but if it is desirable to use a door from top to bottom, the proper way to do is to make an offset on the inside of the wall, 2x2 in. This will allow planks to drop in the cement and thus make the silo perfectly smooth on the inside. Three feet apart, up the opening, a rail about 1 1/2 in. in diameter may be laid, but it extends back into the wall a couple of feet on each side. This will prevent the silo from bulging, and, what is better, is more satisfactory than a door headpiece. A 6 inch wall is sufficient, and if reinforcing is used. A silo built with 6-inch wall will hold about 100,000 pounds of iron sulphate.

SHARP KNIFE-LIKE PAINS Would Go Through Heart

Thousands of people go about their daily work on the verge of death and you don't know it.

Every once in a while a pain will seem to shoot through the heart but little attention is paid to it at the time, and it is only when a violent shock comes that the weakness of the heart is apparent.

MILBURN'S HEART AND NERVE PILLS

There is only one cure and that is MILBURN'S HEART AND NERVE PILLS. Mrs. J. E. Nixon, Riverview, Ont., writes:—"Two years ago I suffered with a bad pain around my heart. At times it would almost stop beating and then a sharp knife-like pain would seem to go through it. As I had heard Milburn's Heart and Nerve Pills were a grand remedy for the heart, I sent and got two boxes of them, and when I had only used a box and a half I was entirely free from pain."

Milburn's Heart and Nerve Pills are 50c per box, or 3 boxes for \$1.25, at all dealers or will be mailed direct on receipt of price by The T. Milburn Co., Limited, Toronto, Ont.



ELECTRIC BEANS

Stand supreme as a Blood and Nerve Tonic.

They are unequalled for Biliousness, Sick Headache, Constipation, Heart Palpitation, Indigestion and Anemia.

Those who are in a position to know what is best use "ELECTRIC BEANS."

Write for Free Sample

50c a Box at all Dealers or upon receipt of price, from THE ELECTRIC BEAN CHEMICAL CO. LTD. OTTAWA.

LAND FOR THE SETTLER

160 acres of land, convenient to railways, in Northern Ontario's great Clay Belt, for each settler.

The soil is rich and productive, and covered with valuable timber.

For full information as to terms of sale, homestead regulations, and special colonization rates to settlers, write to

DONALD SUTHERLAND,

Director of Colonization, Parliament Buildings, Toronto, Ont.

The HON. J. S. DUFF,
Minister of Agriculture.

60,000 Acres

OF CHOICE FARM LAND
WESTERN CANADA.

Excellent selections within a few miles of main line of railway. Prices and terms very reasonable. Call and see us, or write for literature.

The Union Trust Co., Ltd.,
Real-estate Dept.,
174-176 Bay St., Toronto, Ont.



GILSON MFG. CO., 154 York St., GUELPH, ONT.

When Writing Mention This Paper.