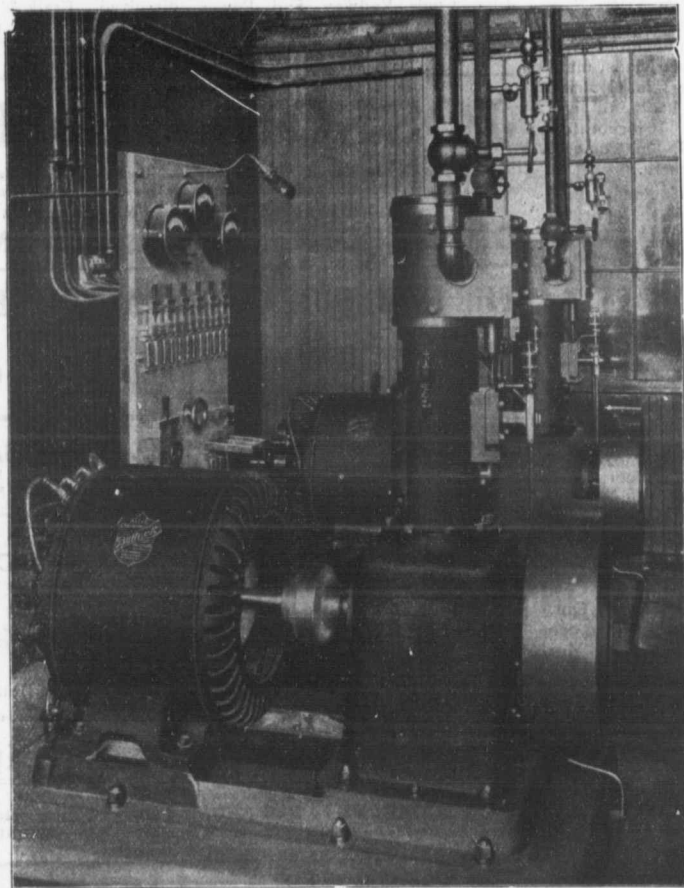


# Electric Light Plants



Two of our 11 K.W. Generators and Auxiliary Apparatus, forming the lighting plant of Dow's Brewery, Montreal. The base of each set is only 57½ in. x 32 in.

**"Allis" Mining, Saw Mill and Flour Mill Machinery, Engines, Pumps, Steam Turbines, Turbine Water Wheels.**

**"Bullock" Electric Apparatus.**

**"Ingersoll" Air Compressors, Coal Cutters and Rock Drills.**

**"Lidgerwood" Hoisting Engines.**

## ALLIS-CHALMERS-BULLOCK

LIMITED

**Head Office and Works: MONTREAL**

**District  
Offices:**

MONTREAL: Sovereign Bank Bldg.  
NEW GLASGOW: National Telephone Bldg.  
WINNIPEG: 251 Notre Dame Ave.

TORONTO: Traders Bank Bldg.  
NELSON: Josephine St.  
VANCOUVER: 416 Seymour St.