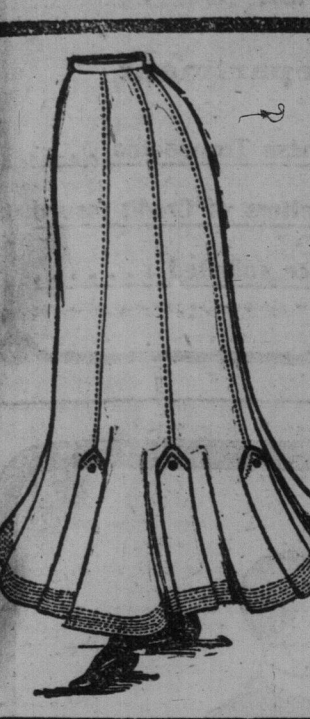


Crawford's
Man-Tailored
...Skirts...

WE are placing on sale a line of exceedingly smart and durable Skirts for ladies' street wear—very newest style—strictly man-tailored—perfect in cut and finish—materials blue, black and grey cheviot. Extraordinary value offered at their regular price of \$5.00, but absolutely the best value ever offered in Toronto at our

SPECIAL \$2.50
PRICE
OTHER SPECIALS
Silk Blouses Regular price \$4.75
Ready-to-Wear Hats—from \$2.00 up.
Ladies' Raincoats—Priestley's unique goods—latest military style \$10 to \$6 to \$5.00.

Crawford Bros.
(LIMITED).

HIGH-CLASS TAILORS.
Cor. Yonge and Shuter-Streets.
Branch Store: 400 Queen St. West.

DUFFERIN DRIVING CLUB RACES.

Looking Glass won Bartram Cup—Brian Barr, Half-Mile Pace.

Looking Glass won Bartram Cup at the Dufferin Park Driving Club's meet yesterday and now this trophy belongs to the club.

The half mile pace brought out a good field and four heats were necessary to decide the winner. The horses entered were: Brian Barr (A. H. Barr), 1; 2, 3, 4, 5, 6, 7, 8, 9, 10, 11, 12, 13, 14, 15, 16, 17, 18, 19, 20, 21, 22, 23, 24, 25, 26, 27, 28, 29, 30, 31, 32, 33, 34, 35, 36, 37, 38, 39, 40, 41, 42, 43, 44, 45, 46, 47, 48, 49, 50, 51, 52, 53, 54, 55, 56, 57, 58, 59, 60, 61, 62, 63, 64, 65, 66, 67, 68, 69, 70, 71, 72, 73, 74, 75, 76, 77, 78, 79, 80, 81, 82, 83, 84, 85, 86, 87, 88, 89, 90, 91, 92, 93, 94, 95, 96, 97, 98, 99, 100, 101, 102, 103, 104, 105, 106, 107, 108, 109, 110, 111, 112, 113, 114, 115, 116, 117, 118, 119, 120, 121, 122, 123, 124, 125, 126, 127, 128, 129, 130, 131, 132, 133, 134, 135, 136, 137, 138, 139, 140, 141, 142, 143, 144, 145, 146, 147, 148, 149, 150, 151, 152, 153, 154, 155, 156, 157, 158, 159, 160, 161, 162, 163, 164, 165, 166, 167, 168, 169, 170, 171, 172, 173, 174, 175, 176, 177, 178, 179, 180, 181, 182, 183, 184, 185, 186, 187, 188, 189, 190, 191, 192, 193, 194, 195, 196, 197, 198, 199, 200, 201, 202, 203, 204, 205, 206, 207, 208, 209, 210, 211, 212, 213, 214, 215, 216, 217, 218, 219, 220, 221, 222, 223, 224, 225, 226, 227, 228, 229, 230, 231, 232, 233, 234, 235, 236, 237, 238, 239, 240, 241, 242, 243, 244, 245, 246, 247, 248, 249, 250, 251, 252, 253, 254, 255, 256, 257, 258, 259, 260, 261, 262, 263, 264, 265, 266, 267, 268, 269, 270, 271, 272, 273, 274, 275, 276, 277, 278, 279, 280, 281, 282, 283, 284, 285, 286, 287, 288, 289, 290, 291, 292, 293, 294, 295, 296, 297, 298, 299, 300, 301, 302, 303, 304, 305, 306, 307, 308, 309, 310, 311, 312, 313, 314, 315, 316, 317, 318, 319, 320, 321, 322, 323, 324, 325, 326, 327, 328, 329, 330, 331, 332, 333, 334, 335, 336, 337, 338, 339, 340, 341, 342, 343, 344, 345, 346, 347, 348, 349, 350, 351, 352, 353, 354, 355, 356, 357, 358, 359, 360, 361, 362, 363, 364, 365, 366, 367, 368, 369, 370, 371, 372, 373, 374, 375, 376, 377, 378, 379, 380, 381, 382, 383, 384, 385, 386, 387, 388, 389, 390, 391, 392, 393, 394, 395, 396, 397, 398, 399, 400, 401, 402, 403, 404, 405, 406, 407, 408, 409, 410, 411, 412, 413, 414, 415, 416, 417, 418, 419, 420, 421, 422, 423, 424, 425, 426, 427, 428, 429, 430, 431, 432, 433, 434, 435, 436, 437, 438, 439, 440, 441, 442, 443, 444, 445, 446, 447, 448, 449, 450, 451, 452, 453, 454, 455, 456, 457, 458, 459, 460, 461, 462, 463, 464, 465, 466, 467, 468, 469, 470, 471, 472, 473, 474, 475, 476, 477, 478, 479, 480, 481, 482, 483, 484, 485, 486, 487, 488, 489, 490, 491, 492, 493, 494, 495, 496, 497, 498, 499, 500, 501, 502, 503, 504, 505, 506, 507, 508, 509, 510, 511, 512, 513, 514, 515, 516, 517, 518, 519, 520, 521, 522, 523, 524, 525, 526, 527, 528, 529, 530, 531, 532, 533, 534, 535, 536, 537, 538, 539, 540, 541, 542, 543, 544, 545, 546, 547, 548, 549, 550, 551, 552, 553, 554, 555, 556, 557, 558, 559, 560, 561, 562, 563, 564, 565, 566, 567, 568, 569, 570, 571, 572, 573, 574, 575, 576, 577, 578, 579, 580, 581, 582, 583, 584, 585, 586, 587, 588, 589, 590, 591, 592, 593, 594, 595, 596, 597, 598, 599, 600, 601, 602, 603, 604, 605, 606, 607, 608, 609, 610, 611, 612, 613, 614, 615, 616, 617, 618, 619, 620, 621, 622, 623, 624, 625, 626, 627, 628, 629, 630, 631, 632, 633, 634, 635, 636, 637, 638, 639, 640, 641, 642, 643, 644, 645, 646, 647, 648, 649, 650, 651, 652, 653, 654, 655, 656, 657, 658, 659, 660, 661, 662, 663, 664, 665, 666, 667, 668, 669, 670, 671, 672, 673, 674, 675, 676, 677, 678, 679, 680, 681, 682, 683, 684, 685, 686, 687, 688, 689, 690, 691, 692, 693, 694, 695, 696, 697, 698, 699, 700, 701, 702, 703, 704, 705, 706, 707, 708, 709, 710, 711, 712, 713, 714, 715, 716, 717, 718, 719, 720, 721, 722, 723, 724, 725, 726, 727, 728, 729, 730, 731, 732, 733, 734, 735, 736, 737, 738, 739, 740, 741, 742, 743, 744, 745, 746, 747, 748, 749, 750, 751, 752, 753, 754, 755, 756, 757, 758, 759, 760, 761, 762, 763, 764, 765, 766, 767, 768, 769, 770, 771, 772, 773, 774, 775, 776, 777, 778, 779, 780, 781, 782, 783, 784, 785, 786, 787, 788, 789, 790, 791, 792, 793, 794, 795, 796, 797, 798, 799, 800, 801, 802, 803, 804, 805, 806, 807, 808, 809, 810, 811, 812, 813, 814, 815, 816, 817, 818, 819, 820, 821, 822, 823, 824, 825, 826, 827, 828, 829, 830, 831, 832, 833, 834, 835, 836, 837, 838, 839, 840, 841, 842, 843, 844, 845, 846, 847, 848, 849, 850, 851, 852, 853, 854, 855, 856, 857, 858, 859, 860, 861, 862, 863, 864, 865, 866, 867, 868, 869, 870, 871, 872, 873, 874, 875, 876, 877, 878, 879, 880, 881, 882, 883, 884, 885, 886, 887, 888, 889, 890, 891, 892, 893, 894, 895, 896, 897, 898, 899, 900, 901, 902, 903, 904, 905, 906, 907, 908, 909, 910, 911, 912, 913, 914, 915, 916, 917, 918, 919, 920, 921, 922, 923, 924, 925, 926, 927, 928, 929, 930, 931, 932, 933, 934, 935, 936, 937, 938, 939, 940, 941, 942, 943, 944, 945, 946, 947, 948, 949, 950, 951, 952, 953, 954, 955, 956, 957, 958, 959, 960, 961, 962, 963, 964, 965, 966, 967, 968, 969, 970, 971, 972, 973, 974, 975, 976, 977, 978, 979, 980, 981, 982, 983, 984, 985, 986, 987, 988, 989, 990, 991, 992, 993, 994, 995, 996, 997, 998, 999, 1000.

Basketball.

The final game for the city league championship will be played at Central Y. M. C. and the Leaders. Both teams are in fine condition, and a good game is looked for. The time of the game will be 2:30 and 4:30.

Baseball.

The first game for the city league championship will be played at Central Y. M. C. and the Leaders. Both teams are in fine condition, and a good game is looked for. The time of the game will be 2:30 and 4:30.

Baseball.

The first game for the city league championship will be played at Central Y. M. C. and the Leaders. Both teams are in fine condition, and a good game is looked for. The time of the game will be 2:30 and 4:30.

Baseball.

The first game for the city league championship will be played at Central Y. M. C. and the Leaders. Both teams are in fine condition, and a good game is looked for. The time of the game will be 2:30 and 4:30.

Baseball.

The first game for the city league championship will be played at Central Y. M. C. and the Leaders. Both teams are in fine condition, and a good game is looked for. The time of the game will be 2:30 and 4:30.

Baseball.

The first game for the city league championship will be played at Central Y. M. C. and the Leaders. Both teams are in fine condition, and a good game is looked for. The time of the game will be 2:30 and 4:30.

Baseball.

The first game for the city league championship will be played at Central Y. M. C. and the Leaders. Both teams are in fine condition, and a good game is looked for. The time of the game will be 2:30 and 4:30.

Baseball.

The first game for the city league championship will be played at Central Y. M. C. and the Leaders. Both teams are in fine condition, and a good game is looked for. The time of the game will be 2:30 and 4:30.

Baseball.

The first game for the city league championship will be played at Central Y. M. C. and the Leaders. Both teams are in fine condition, and a good game is looked for. The time of the game will be 2:30 and 4:30.

Baseball.

The first game for the city league championship will be played at Central Y. M. C. and the Leaders. Both teams are in fine condition, and a good game is looked for. The time of the game will be 2:30 and 4:30.

Baseball.

The first game for the city league championship will be played at Central Y. M. C. and the Leaders. Both teams are in fine condition, and a good game is looked for. The time of the game will be 2:30 and 4:30.

Baseball.

The first game for the city league championship will be played at Central Y. M. C. and the Leaders. Both teams are in fine condition, and a good game is looked for. The time of the game will be 2:30 and 4:30.

Baseball.

The first game for the city league championship will be played at Central Y. M. C. and the Leaders. Both teams are in fine condition, and a good game is looked for. The time of the game will be 2:30 and 4:30.

Baseball.

The first game for the city league championship will be played at Central Y. M. C. and the Leaders. Both teams are in fine condition, and a good game is looked for. The time of the game will be 2:30 and 4:30.

Baseball.

The first game for the city league championship will be played at Central Y. M. C. and the Leaders. Both teams are in fine condition, and a good game is looked for. The time of the game will be 2:30 and 4:30.

Baseball.

The first game for the city league championship will be played at Central Y. M. C. and the Leaders. Both teams are in fine condition, and a good game is looked for. The time of the game will be 2:30 and 4:30.

Baseball.

The first game for the city league championship will be played at Central Y. M. C. and the Leaders. Both teams are in fine condition, and a good game is looked for. The time of the game will be 2:30 and 4:30.

Baseball.

The first game for the city league championship will be played at Central Y. M. C. and the Leaders. Both teams are in fine condition, and a good game is looked for. The time of the game will be 2:30 and 4:30.

Baseball.

The first game for the city league championship will be played at Central Y. M. C. and the Leaders. Both teams are in fine condition, and a good game is looked for. The time of the game will be 2:30 and 4:30.

Baseball.

The first game for the city league championship will be played at Central Y. M. C. and the Leaders. Both teams are in fine condition, and a good game is looked for. The time of the game will be 2:30 and 4:30.

Baseball.

The first game for the city league championship will be played at Central Y. M. C. and the Leaders. Both teams are in fine condition, and a good game is looked for. The time of the game will be 2:30 and 4:30.

Baseball.

The first game for the city league championship will be played at Central Y. M. C. and the Leaders. Both teams are in fine condition, and a good game is looked for. The time of the game will be 2:30 and 4:30.

FAVORITES HAD THEIR DAY
FOUR ORLEANS RACES

H. B. Griffin Ordered to Remove His Horses From Track—Oakland Results.

New Orleans, March 9.—Favorites had the best of the day's racing. The first four events falling to their share. The Messager, who won the fifth, was strong second choice. The weather was clear and the track fast. H. B. Griffin has been ordered to remove all horses owned or controlled by him with the exception of those entered in the stakes from the track. Summary:

First race, 7 furlongs—Our Sire, 108 (L. Matthews), 11 to 5; 1; Amorous, 107 (L. Matthews), 25 to 1; 2; John, 106 (L. Matthews), 3 to 1; 3. Time 1:27.1. St. Louis, 105 (L. Matthews), 4 to 1; 4. Time 1:27.1. St. Louis, 104 (L. Matthews), 5 to 1; 5. Time 1:27.1. St. Louis, 103 (L. Matthews), 6 to 1; 6. Time 1:27.1. St. Louis, 102 (L. Matthews), 7 to 1; 7. Time 1:27.1. St. Louis, 101 (L. Matthews), 8 to 1; 8. Time 1:27.1. St. Louis, 100 (L. Matthews), 9 to 1; 9. Time 1:27.1. St. Louis, 99 (L. Matthews), 10 to 1; 10. Time 1:27.1. St. Louis, 98 (L. Matthews), 11 to 1; 11. Time 1:27.1. St. Louis, 97 (L. Matthews), 12 to 1; 12. Time 1:27.1. St. Louis, 96 (L. Matthews), 13 to 1; 13. Time 1:27.1. St. Louis, 95 (L. Matthews), 14 to 1; 14. Time 1:27.1. St. Louis, 94 (L. Matthews), 15 to 1; 15. Time 1:27.1. St. Louis, 93 (L. Matthews), 16 to 1; 16. Time 1:27.1. St. Louis, 92 (L. Matthews), 17 to 1; 17. Time 1:27.1. St. Louis, 91 (L. Matthews), 18 to 1; 18. Time 1:27.1. St. Louis, 90 (L. Matthews), 19 to 1; 19. Time 1:27.1. St. Louis, 89 (L. Matthews), 20 to 1; 20. Time 1:27.1. St. Louis, 88 (L. Matthews), 21 to 1; 21. Time 1:27.1. St. Louis, 87 (L. Matthews), 22 to 1; 22. Time 1:27.1. St. Louis, 86 (L. Matthews), 23 to 1; 23. Time 1:27.1. St. Louis, 85 (L. Matthews), 24 to 1; 24. Time 1:27.1. St. Louis, 84 (L. Matthews), 25 to 1; 25. Time 1:27.1. St. Louis, 83 (L. Matthews), 26 to 1; 26. Time 1:27.1. St. Louis, 82 (L. Matthews), 27 to 1; 27. Time 1:27.1. St. Louis, 81 (L. Matthews), 28 to 1; 28. Time 1:27.1. St. Louis, 80 (L. Matthews), 29 to 1; 29. Time 1:27.1. St. Louis, 79 (L. Matthews), 30 to 1; 30. Time 1:27.1. St. Louis, 78 (L. Matthews), 31 to 1; 31. Time 1:27.1. St. Louis, 77 (L. Matthews), 32 to 1; 32. Time 1:27.1. St. Louis, 76 (L. Matthews), 33 to 1; 33. Time 1:27.1. St. Louis, 75 (L. Matthews), 34 to 1; 34. Time 1:27.1. St. Louis, 74 (L. Matthews), 35 to 1; 35. Time 1:27.1. St. Louis, 73 (L. Matthews), 36 to 1; 36. Time 1:27.1. St. Louis, 72 (L. Matthews), 37 to 1; 37. Time 1:27.1. St. Louis, 71 (L. Matthews), 38 to 1; 38. Time 1:27.1. St. Louis, 70 (L. Matthews), 39 to 1; 39. Time 1:27.1. St. Louis, 69 (L. Matthews), 40 to 1; 40. Time 1:27.1. St. Louis, 68 (L. Matthews), 41 to 1; 41. Time 1:27.1. St. Louis, 67 (L. Matthews), 42 to 1; 42. Time 1:27.1. St. Louis, 66 (L. Matthews), 43 to 1; 43. Time 1:27.1. St. Louis, 65 (L. Matthews), 44 to 1; 44. Time 1:27.1. St. Louis, 64 (L. Matthews), 45 to 1; 45. Time 1:27.1. St. Louis, 63 (L. Matthews), 46 to 1; 46. Time 1:27.1. St. Louis, 62 (L. Matthews), 47 to 1; 47. Time 1:27.1. St. Louis, 61 (L. Matthews), 48 to 1; 48. Time 1:27.1. St. Louis, 60 (L. Matthews), 49 to 1; 49. Time 1:27.1. St. Louis, 59 (L. Matthews), 50 to 1; 50. Time 1:27.1. St. Louis, 58 (L. Matthews), 51 to 1; 51. Time 1:27.1. St. Louis, 57 (L. Matthews), 52 to 1; 52. Time 1:27.1. St. Louis, 56 (L. Matthews), 53 to 1; 53. Time 1:27.1. St. Louis, 55 (L. Matthews), 54 to 1; 54. Time 1:27.1. St. Louis, 54 (L. Matthews), 55 to 1; 55. Time 1:27.1. St. Louis, 53 (L. Matthews), 56 to 1; 56. Time 1:27.1. St. Louis, 52 (L. Matthews), 57 to 1; 57. Time 1:27.1. St. Louis, 51 (L. Matthews), 58 to 1; 58. Time 1:27.1. St. Louis, 50 (L. Matthews), 59 to 1; 59. Time 1:27.1. St. Louis, 49 (L. Matthews), 60 to 1; 60. Time 1:27.1. St. Louis, 48 (L. Matthews), 61 to 1; 61. Time 1:27.1. St. Louis, 47 (L. Matthews), 62 to 1; 62. Time 1:27.1. St. Louis, 46 (L. Matthews), 63 to 1; 63. Time 1:27.1. St. Louis, 45 (L. Matthews), 64 to 1; 64. Time 1:27.1. St. Louis, 44 (L. Matthews), 65 to 1; 65. Time 1:27.1. St. Louis, 43 (L. Matthews), 66 to 1; 66. Time 1:27.1. St. Louis, 42 (L. Matthews), 67 to 1; 67. Time 1:27.1. St. Louis, 41 (L. Matthews), 68 to 1; 68. Time 1:27.1. St. Louis, 40 (L. Matthews), 69 to 1; 69. Time 1:27.1. St. Louis, 39 (L. Matthews), 70 to 1; 70. Time 1:27.1. St. Louis, 38 (L. Matthews), 71 to 1; 71. Time 1:27.1. St. Louis, 37 (L. Matthews), 72 to 1; 72. Time 1:27.1. St. Louis, 36 (L. Matthews), 73 to 1; 73. Time 1:27.1. St. Louis, 35 (L. Matthews), 74 to 1; 74. Time 1:27.1. St. Louis, 34 (L. Matthews), 75 to 1; 75. Time 1:27.1. St. Louis, 33 (L. Matthews), 76 to 1; 76. Time 1:27.1. St. Louis, 32 (L. Matthews), 77 to 1; 77. Time 1:27.1. St. Louis, 31 (L. Matthews), 78 to 1; 78. Time 1:27.1. St. Louis, 30 (L. Matthews), 79 to 1; 79. Time 1:27.1. St. Louis, 29 (L. Matthews), 80 to 1; 80. Time 1:27.1. St. Louis, 28 (L. Matthews), 81 to 1; 81. Time 1:27.1. St. Louis, 27 (L. Matthews), 82 to 1; 82. Time 1:27.1. St. Louis, 26 (L. Matthews), 83 to 1; 83. Time 1:27.1. St. Louis, 25 (L. Matthews), 84 to 1; 84. Time 1:27.1. St. Louis, 24 (L. Matthews), 85 to 1; 85. Time 1:27.1. St. Louis, 23 (L. Matthews), 86 to 1; 86. Time 1:27.1. St. Louis, 22 (L. Matthews), 87 to 1; 87. Time 1:27.1. St. Louis, 21 (L. Matthews), 88 to 1; 88. Time 1:27.1. St. Louis, 20 (L. Matthews), 89 to 1; 89. Time 1:27.1. St. Louis, 19 (L. Matthews), 90 to 1; 90. Time 1:27.1. St. Louis, 18 (L. Matthews), 91 to 1; 91. Time 1:27.1. St. Louis, 17 (L. Matthews), 92 to 1; 92. Time 1:27.1. St. Louis, 16 (L. Matthews), 93 to 1; 93. Time 1:27.1. St. Louis, 15 (L. Matthews), 94 to 1; 94. Time 1:27.1. St. Louis, 14 (L. Matthews), 95 to 1; 95. Time 1:27.1. St. Louis, 13 (L. Matthews), 96 to 1; 96. Time 1:27.1. St. Louis, 12 (L. Matthews), 97 to 1; 97. Time 1:27.1. St. Louis, 11 (L. Matthews), 98 to 1; 98. Time 1:27.1. St. Louis, 10 (L. Matthews), 99 to 1; 99. Time 1:27.1. St. Louis, 9 (L. Matthews), 100 to 1; 100. Time 1:27.1. St. Louis, 8 (L. Matthews), 101 to 1; 101. Time 1:27.1. St. Louis, 7 (L. Matthews), 102 to 1; 102. Time 1:27.1. St. Louis, 6 (L. Matthews), 103 to 1; 103. Time 1:27.1. St. Louis, 5 (L. Matthews), 104 to 1; 104. Time 1:27.1. St. Louis, 4 (L. Matthews), 105 to 1; 105. Time 1:27.1. St. Louis, 3 (L. Matthews), 106 to 1; 106. Time 1:27.1. St. Louis, 2 (L. Matthews), 107 to 1; 107. Time 1:27.1. St. Louis, 1 (L. Matthews), 108 to 1; 108. Time 1:27.1. St. Louis, 0 (L. Matthews), 109 to 1; 109. Time 1:27.1. St. Louis, -1 (L. Matthews), 110 to 1; 110. Time 1:27.1. St. Louis, -2 (L. Matthews), 111 to 1; 111. Time 1:27.1. St. Louis, -3 (L. Matthews), 112 to 1; 112. Time 1:27.1. St. Louis, -4 (L. Matthews), 113 to 1; 113. Time 1:27.1. St. Louis, -5 (L. Matthews), 114 to 1; 114. Time 1:27.1. St. Louis, -6 (L. Matthews), 115 to 1; 115. Time 1:27.1. St. Louis, -7 (L. Matthews), 116 to 1; 116. Time 1:27.1. St. Louis, -8 (L. Matthews), 117 to 1; 117. Time 1:27.1. St. Louis, -9 (L. Matthews), 118 to 1; 118. Time 1:27.1. St. Louis, -10 (L. Matthews), 119 to 1; 119. Time 1:27.1. St. Louis, -11 (L. Matthews), 120 to 1; 120. Time 1:27.1. St. Louis, -12 (L. Matthews), 121 to 1; 1