

# A HAPPY NEW YEAR TO EVERYONE

## LADIES' WHITE COTTON UNDERWEAR

The manner in which our Cotton Underwear is prepared gives special value to each article. We do not rest on one manufacturer, but our orders are placed with a number of factories known for the fine quality of their goods—factories where high-class and cleanly labor works under the most advantageous conditions. Our orders are for very large quantities, ensuring the closest prices. What is more, looking ahead, plenty of time is given the manufacturers that the work may be carefully done and the finish perfect.

### Ladies' Gowns.



14.—Ladies' Gown, Empire style, English cotton, yoke of fine tucks and insertion, trimmed with embroidery, collar and sleeves trimmed with embroidery ..... **.85**



17.—Ladies' Gown, good cotton, made on yoke of insertion and tucks, embroidered collar and cuffs, insertion placket edged with embroidery ..... **.95**



19.—Ladies' Gown, Empire style, good quality American cotton, sailor collar, sleeves and across yoke trimmed with embroidery ..... **1.23**



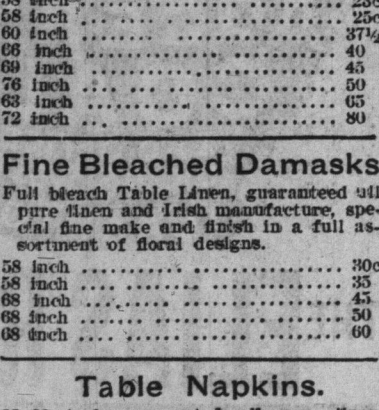
24.—Ladies' Gown, Lonsdale cambric, yoke of insertion and fine tucks, trimmed around yoke and sleeves with embroidery ..... **1.75**



47.—Ladies' Chemise, English cotton cambric, full length, neck, sleeves and bottom, insertion front with frill of cambric, full size ..... **.28**



52.—Ladies' Chemise, Lonsdale cambric, yoke of insertion and ribbon, neck, sleeves and around yoke trimmed with fine Swiss embroidery ..... **1.15**



53.—Ladies' Chemise, Lonsdale cambric, yoke of insertion and ribbon, neck, sleeves and around yoke trimmed with fine Swiss embroidery ..... **1.15**



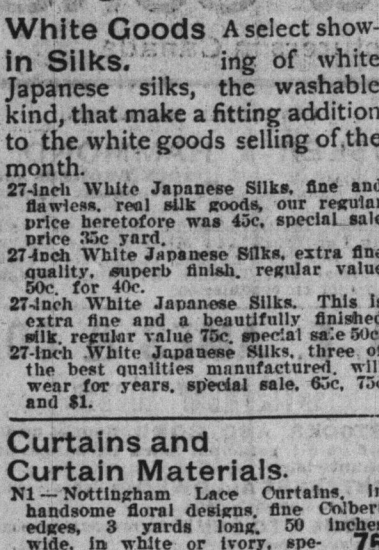
54.—Ladies' Chemise, Lonsdale cambric, yoke of insertion and ribbon, neck, sleeves and around yoke trimmed with fine Swiss embroidery ..... **1.15**



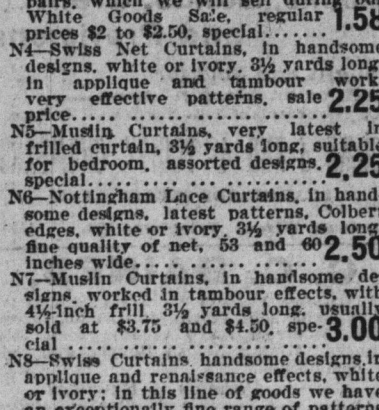
55.—Ladies' Chemise, Lonsdale cambric, yoke of insertion and ribbon, neck, sleeves and around yoke trimmed with fine Swiss embroidery ..... **1.15**



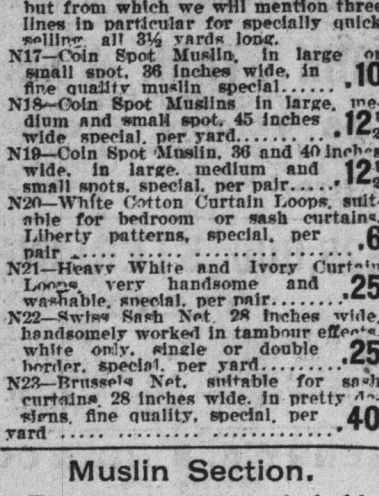
56.—Ladies' Chemise, Lonsdale cambric, yoke of insertion and ribbon, neck, sleeves and around yoke trimmed with fine Swiss embroidery ..... **1.15**



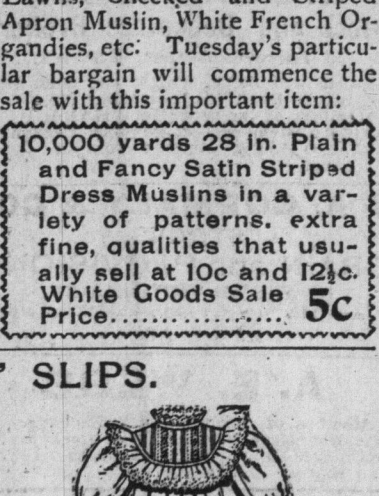
57.—Ladies' Chemise, Lonsdale cambric, yoke of insertion and ribbon, neck, sleeves and around yoke trimmed with fine Swiss embroidery ..... **1.15**



58.—Ladies' Chemise, Lonsdale cambric, yoke of insertion and ribbon, neck, sleeves and around yoke trimmed with fine Swiss embroidery ..... **1.15**



59.—Ladies' Chemise, Lonsdale cambric, yoke of insertion and ribbon, neck, sleeves and around yoke trimmed with fine Swiss embroidery ..... **1.15**



60.—Ladies' Chemise, Lonsdale cambric, yoke of insertion and ribbon, neck, sleeves and around yoke trimmed with fine Swiss embroidery ..... **1.15**



61.—Ladies' Chemise, Lonsdale cambric, yoke of insertion and ribbon, neck, sleeves and around yoke trimmed with fine Swiss embroidery ..... **1.15**



62.—Ladies' Chemise, Lonsdale cambric, yoke of insertion and ribbon, neck, sleeves and around yoke trimmed with fine Swiss embroidery ..... **1.15**



63.—Ladies' Chemise, Lonsdale cambric, yoke of insertion and ribbon, neck, sleeves and around yoke trimmed with fine Swiss embroidery ..... **1.15**



64.—Ladies' Chemise, Lonsdale cambric, yoke of insertion and ribbon, neck, sleeves and around yoke trimmed with fine Swiss embroidery ..... **1.15**



65.—Ladies' Chemise, Lonsdale cambric, yoke of insertion and ribbon, neck, sleeves and around yoke trimmed with fine Swiss embroidery ..... **1.15**



66.—Ladies' Chemise, Lonsdale cambric, yoke of insertion and ribbon, neck, sleeves and around yoke trimmed with fine Swiss embroidery ..... **1.15**

# A HAPPY NEW YEAR TO EVERYONE

Exceptional Offerings for Tuesday's Selling. Tuesday will see the beginning of the greatest White Goods Sale that we have ever had, but in addition to this it will also be the beginning of exceptional offerings throughout the store. Just one month to stock-taking and every department will have something that will interest buyers both as to quality and price, so that the month of January will be a banner month throughout the store. This is the list for to-morrow morning's shoppers:

### Men's Furnishings.

Men's Seamless Black Cashmere 1/2 Hose, fine heavy quality, regular selling price 25c pair; sizes 10 to 11 1/2, 20c pair, or \$2.25 doz. pairs; on sale in gents' furnishings department.



Men's Cambric Shirts, in neat stripes and checks, odd lines, sizes 14, 14 1/2, 15 1/2, 16, 16 1/2, 17, 17 1/2, 18, 18 1/2, 19, 19 1/2, 20, 20 1/2, 21, 21 1/2, 22, 22 1/2, 23, 23 1/2, 24, 24 1/2, 25, 25 1/2, 26, 26 1/2, 27, 27 1/2, 28, 28 1/2, 29, 29 1/2, 30, 30 1/2, 31, 31 1/2, 32, 32 1/2, 33, 33 1/2, 34, 34 1/2, 35, 35 1/2, 36, 36 1/2, 37, 37 1/2, 38, 38 1/2, 39, 39 1/2, 40, 40 1/2, 41, 41 1/2, 42, 42 1/2, 43, 43 1/2, 44, 44 1/2, 45, 45 1/2, 46, 46 1/2, 47, 47 1/2, 48, 48 1/2, 49, 49 1/2, 50, 50 1/2, 51, 51 1/2, 52, 52 1/2, 53, 53 1/2, 54, 54 1/2, 55, 55 1/2, 56, 56 1/2, 57, 57 1/2, 58, 58 1/2, 59, 59 1/2, 60, 60 1/2, 61, 61 1/2, 62, 62 1/2, 63, 63 1/2, 64, 64 1/2, 65, 65 1/2, 66, 66 1/2, 67, 67 1/2, 68, 68 1/2, 69, 69 1/2, 70, 70 1/2, 71, 71 1/2, 72, 72 1/2, 73, 73 1/2, 74, 74 1/2, 75, 75 1/2, 76, 76 1/2, 77, 77 1/2, 78, 78 1/2, 79, 79 1/2, 80, 80 1/2, 81, 81 1/2, 82, 82 1/2, 83, 83 1/2, 84, 84 1/2, 85, 85 1/2, 86, 86 1/2, 87, 87 1/2, 88, 88 1/2, 89, 89 1/2, 90, 90 1/2, 91, 91 1/2, 92, 92 1/2, 93, 93 1/2, 94, 94 1/2, 95, 95 1/2, 96, 96 1/2, 97, 97 1/2, 98, 98 1/2, 99, 99 1/2, 100, 100 1/2, 101, 101 1/2, 102, 102 1/2, 103, 103 1/2, 104, 104 1/2, 105, 105 1/2, 106, 106 1/2, 107, 107 1/2, 108, 108 1/2, 109, 109 1/2, 110, 110 1/2, 111, 111 1/2, 112, 112 1/2, 113, 113 1/2, 114, 114 1/2, 115, 115 1/2, 116, 116 1/2, 117, 117 1/2, 118, 118 1/2, 119, 119 1/2, 120, 120 1/2, 121, 121 1/2, 122, 122 1/2, 123, 123 1/2, 124, 124 1/2, 125, 125 1/2, 126, 126 1/2, 127, 127 1/2, 128, 128 1/2, 129, 129 1/2, 130, 130 1/2, 131, 131 1/2, 132, 132 1/2, 133, 133 1/2, 134, 134 1/2, 135, 135 1/2, 136, 136 1/2, 137, 137 1/2, 138, 138 1/2, 139, 139 1/2, 140, 140 1/2, 141, 141 1/2, 142, 142 1/2, 143, 143 1/2, 144, 144 1/2, 145, 145 1/2, 146, 146 1/2, 147, 147 1/2, 148, 148 1/2, 149, 149 1/2, 150, 150 1/2, 151, 151 1/2, 152, 152 1/2, 153, 153 1/2, 154, 154 1/2, 155, 155 1/2, 156, 156 1/2, 157, 157 1/2, 158, 158 1/2, 159, 159 1/2, 160, 160 1/2, 161, 161 1/2, 162, 162 1/2, 163, 163 1/2, 164, 164 1/2, 165, 165 1/2, 166, 166 1/2, 167, 167 1/2, 168, 168 1/2, 169, 169 1/2, 170, 170 1/2, 171, 171 1/2, 172, 172 1/2, 173, 173 1/2, 174, 174 1/2, 175, 175 1/2, 176, 176 1/2, 177, 177 1/2, 178, 178 1/2, 179, 179 1/2, 180, 180 1/2, 181, 181 1/2, 182, 182 1/2, 183, 183 1/2, 184, 184 1/2, 185, 185 1/2, 186, 186 1/2, 187, 187 1/2, 188, 188 1/2, 189, 189 1/2, 190, 190 1/2, 191, 191 1/2, 192, 192 1/2, 193, 193 1/2, 194, 194 1/2, 195, 195 1/2, 196, 196 1/2, 197, 197 1/2, 198, 198 1/2, 199, 199 1/2, 200, 200 1/2, 201, 201 1/2, 202, 202 1/2, 203, 203 1/2, 204, 204 1/2, 205, 205 1/2, 206, 206 1/2, 207, 207 1/2, 208, 208 1/2, 209, 209 1/2, 210, 210 1/2, 211, 211 1/2, 212, 212 1/2, 213, 213 1/2, 214, 214 1/2, 215, 215 1/2, 216, 216 1/2, 217, 217 1/2, 218, 218 1/2, 219, 219 1/2, 220, 220 1/2, 221, 221 1/2, 222, 222 1/2, 223, 223 1/2, 224, 224 1/2, 225, 225 1/2, 226, 226 1/2, 227, 227 1/2, 228, 228 1/2, 229, 229 1/2, 230, 230 1/2, 231, 231 1/2, 232, 232 1/2, 233, 233 1/2, 234, 234 1/2, 235, 235 1/2, 236, 236 1/2, 237, 237 1/2, 238, 238 1/2, 239, 239 1/2, 240, 240 1/2, 241, 241 1/2, 242, 242 1/2, 243, 243 1/2, 244, 244 1/2, 245, 245 1/2, 246, 246 1/2, 247, 247 1/2, 248, 248 1/2, 249, 249 1/2, 250, 250 1/2, 251, 251 1/2, 252, 252 1/2, 253, 253 1/2, 254, 254 1/2, 255, 255 1/2, 256, 256 1/2, 257, 257 1/2, 258, 258 1/2, 259, 259 1/2, 260, 260 1/2, 261, 261 1/2, 262, 262 1/2, 263, 263 1/2, 264, 264 1/2, 265, 265 1/2, 266, 266 1/2, 267, 267 1/2, 268, 268 1/2, 269, 269 1/2, 270, 270 1/2, 271, 271 1/2, 272, 272 1/2, 273, 273 1/2, 274, 274 1/2, 275, 275 1/2, 276, 276 1/2, 277, 277 1/2, 278, 278 1/2, 279, 279 1/2, 280, 280 1/2, 281, 281 1/2, 282, 282 1/2, 283, 283 1/2, 284, 284 1/2, 285, 285 1/2, 286, 286 1/2, 287, 287 1/2, 288, 288 1/2, 289, 289 1/2, 290, 290 1/2, 291, 291 1/2, 292, 292 1/2, 293, 293 1/2, 294, 294 1/2, 295, 295 1/2, 296, 296 1/2, 297, 297 1/2, 298, 298 1/2, 299, 299 1/2, 300, 300 1/2, 301, 301 1/2, 302, 302 1/2, 303, 303 1/2, 304, 304 1/2, 305, 305 1/2, 306, 306 1/2, 307, 307 1/2, 308, 308 1/2, 309, 309 1/2, 310, 310 1/2, 311, 311 1/2, 312, 312 1/2, 313, 313 1/2, 314, 314 1/2, 315, 315 1/2, 316, 316 1/2, 317, 317 1/2, 318, 318 1/2, 319, 319 1/2, 320, 320 1/2, 321, 321 1/2, 322, 322 1/2, 323, 323 1/2, 324, 324 1/2, 325, 325 1/2, 326, 326 1/2, 327, 327 1/2, 328, 328 1/2, 329, 329 1/2, 330, 330 1/2, 331, 331 1/2, 332, 332 1/2, 333, 333 1/2, 334, 334 1/2, 335, 335 1/2, 336, 336 1/2, 337, 337 1/2, 338, 338 1/2, 339, 339 1/2, 340, 340 1/2, 341, 341 1/2, 342, 342 1/2, 343, 343 1/2, 344, 344 1/2, 345, 345 1/2, 346, 346 1/2, 347, 347 1/2, 348, 348 1/2, 349, 349 1/2, 350, 350 1/2, 351, 351 1/2, 352, 352 1/2, 353, 353 1/2, 354, 354 1/2, 355, 355 1/2, 356, 356 1/2, 357, 357 1/2, 358, 358 1/2, 359, 359 1/2, 360, 360 1/2, 361, 361 1/2, 362, 362 1/2, 363, 363 1/2, 364, 364 1/2, 365, 365 1/2, 366, 366 1/2, 367, 367 1/2, 368, 368 1/2, 369, 369 1/2, 370, 370 1/2, 371, 371 1/2, 372, 372 1/2, 373, 373 1/2, 374, 374 1/2, 375, 375 1/2, 376, 376 1/2, 377, 377 1/2, 378, 378 1/2, 379, 379 1/2, 380, 380 1/2, 381, 381 1/2, 382, 382 1/2, 383, 383 1/2, 384, 384 1/2, 385, 385 1/2, 386, 386 1/2, 387, 387 1/2, 388, 388 1/2, 389, 389 1/2, 390, 390 1/2, 391, 391 1/2, 392, 392 1/2, 393, 393 1/2, 394, 394 1/2, 395, 395 1/2, 396, 396 1/2, 397, 397 1/2, 398, 398 1/2, 399, 399 1/2, 400, 400 1/2, 401, 401 1/2, 402, 402 1/2, 403, 403 1/2, 404, 404 1/2, 405, 405 1/2, 406, 406 1/2, 407, 407 1/2, 408, 408 1/2, 409, 409 1/2, 410, 410 1/2, 411, 411 1/2, 412, 412 1/2, 413, 413 1/2, 414, 414 1/2, 415, 415 1/2, 416, 416 1/2, 417, 417 1/2, 418, 418 1/2, 419, 419 1/2, 420, 420 1/2, 421, 421 1/2, 422, 422 1/2, 423, 423 1/2, 424, 424 1/2, 425, 425 1/2, 426, 426 1/2, 427, 427 1/2, 428, 428 1/2, 429, 429 1/2, 430, 430 1/2, 431, 431 1/2, 432, 432 1/2, 433, 433 1/2, 434, 434 1/2, 435, 435 1/2, 436, 436 1/2, 437, 437 1/2, 438, 438 1/2, 439, 439 1/2, 440, 440 1/2, 441, 441 1/2, 442, 442 1/2, 443, 443 1/2, 444, 444 1/2, 445, 445 1/2, 446, 446 1/2, 447, 447 1/2, 448, 448 1/2, 449, 449 1/2, 450, 450 1/2, 451, 451 1/2, 452, 452 1/2, 453, 453 1/2, 454, 454 1/2, 455, 455 1/2, 456, 456 1/2, 457, 457 1/2, 458, 458 1/2, 459, 459 1/2, 460, 460 1/2, 461, 461 1/2, 462, 462 1/2, 463, 463 1/2, 464, 464 1/2, 465, 465 1/2, 466, 466 1/2, 467, 467 1/2, 468, 468 1/2, 469, 469 1/2, 470, 470 1/2, 471, 471 1/2, 472, 472 1/2, 473, 473 1/2, 474, 474 1/2, 475, 475 1/2, 476, 476 1/2, 477, 477 1/2, 478, 478 1/2, 479, 479 1/2, 480, 480 1/2, 481, 481 1/2, 482, 482 1/2, 483, 483 1/2, 484, 484 1/2, 485, 485 1/2, 486, 486 1/2, 487, 487 1/2, 488, 488 1/2, 489, 489 1/2, 490, 490 1/2, 491, 491 1/2, 492, 492 1/2, 493, 493 1/2, 494, 494 1/2, 495, 495 1/2, 496, 496 1/2, 497, 497 1/2, 498, 498 1/2, 499, 499 1/2, 500, 500 1/2, 501, 501 1/2, 502, 502 1/2, 503, 503 1/2, 504, 504 1/2, 505, 505 1/2, 506, 506 1/2, 507, 507 1/2, 508, 508 1/2, 509, 509 1/2, 510, 510 1/2, 511, 511 1/2, 512, 512 1/2, 513, 513 1/2, 514, 514 1/2, 515, 515 1/2, 516, 516 1/2, 517, 517 1/2, 518, 518 1/2, 519, 519 1/2, 520, 520 1/2, 521, 521 1/2, 522, 522 1/2, 523, 523 1/2, 524, 524 1/2, 525, 525 1/2, 526, 526 1/2, 527, 527 1/2, 528, 528 1/2, 529, 529 1/2, 530, 530 1/2, 531, 531 1/2, 532, 532 1/2, 533, 533 1/2, 534, 534 1/2, 535, 535 1/2, 536, 536 1/2, 537, 537 1/2, 538, 538 1/2, 539, 539 1/2, 540, 540 1/2, 541, 541 1/2, 542, 542 1/2, 543, 543 1/2, 544, 544 1/2, 545, 545 1/2, 546, 546 1/2, 547, 547 1/2, 548, 548 1/2, 549, 549 1/2, 550, 550 1/2, 551, 551 1/2, 552, 552 1/2, 553, 553 1/2, 554, 554 1/2, 555, 555 1/2, 556, 556 1/2, 557, 557 1/2, 558, 558 1/2, 559, 559 1/2, 560, 560 1/2, 561, 561 1/2, 562, 562 1/2, 563, 563 1/2, 564, 564 1/2, 565, 565 1/2, 566, 566 1/2, 567, 567 1/2, 568, 568 1/2, 569, 569 1/2, 570, 570 1/2, 571, 571 1/2, 572, 572 1/2, 573, 573 1/2, 574, 574 1/2, 575, 575 1/2, 576, 576 1/2, 577, 577 1/2, 578, 578 1/2, 579, 579 1/2, 580, 580 1/2, 581, 581 1/2, 582, 582 1/2, 583, 583 1/2, 584, 584 1/2, 585, 585 1/2, 586, 586 1/2, 587, 587 1/2, 588, 588 1/2, 589, 589 1/2, 590, 590 1/2, 591, 591 1/2, 592, 592 1/2, 593, 593 1/2, 594, 594 1/2, 595, 595 1/2, 596, 596 1/2, 597, 597 1/2, 598, 598 1/2, 599, 599 1/2, 600, 600 1/2, 601, 601 1/2, 602, 602 1/2, 603, 603 1/2, 604, 604 1/2, 605, 605 1/2, 606, 606 1/2, 607, 607 1/2, 608, 608 1/2, 609, 609 1/2, 610, 610 1/2, 611, 611 1/2, 612, 612 1/2, 613, 613 1/2, 614, 614 1/2, 615, 615 1/2, 616, 616 1/2, 617, 617 1/2, 618, 618 1/2, 619, 619 1/2, 620, 620 1/2, 621, 621 1/2, 622, 622 1/2, 623, 623 1/2, 624, 624 1/2, 625, 625 1/2, 626, 626 1/2, 627, 627 1/2, 628, 628 1/2, 629, 629 1/2, 630, 630 1/2, 631, 631 1/2, 632, 632 1/2, 633, 633 1/2, 634, 634 1/2, 635, 635 1/2, 636, 636 1/2, 637, 637 1/2, 638, 638 1/2, 639, 639 1/2, 640, 640 1/2, 641, 641 1/2, 642, 642 1/2, 643, 643 1/2, 644, 644 1/2, 645, 645 1/2, 646, 646 1/2, 647, 647 1/2, 648, 648 1/2, 649, 649 1/2, 650, 650 1/2, 651, 651 1/2, 652, 652 1/2, 653, 653 1/2, 654, 654 1/2, 655, 655 1/2, 656, 656 1/2, 657, 657 1/2, 658, 658 1/2, 659,