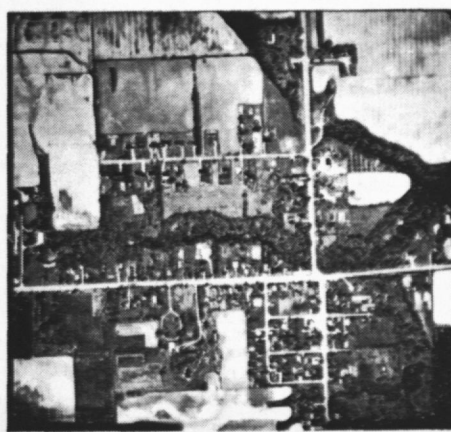
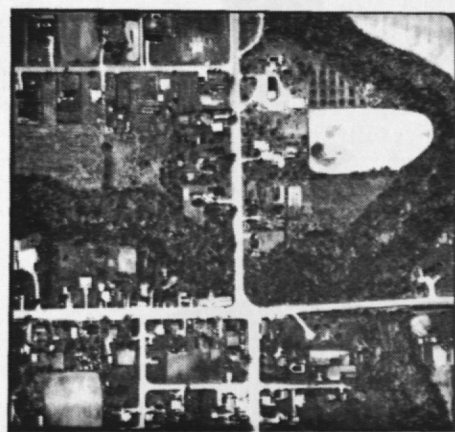


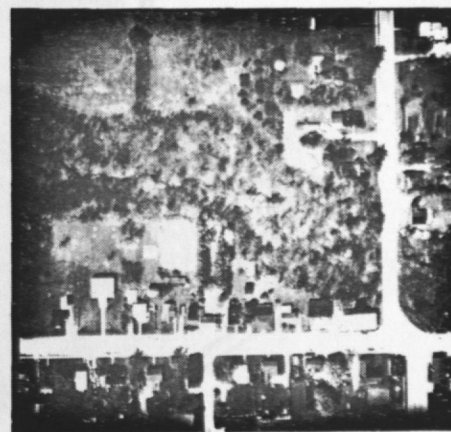
1:40,000



1:20,000



1:10,000



1:5,000

Figure 6. Aerial photography at different scales:

- (a) 1:5,000 (largest scale)
- (b) 1:10,000
- (c) 1:20,000
- (d) 1:40,000 (smallest scale)

Notice the extent to which small detail can be interpreted at each scale. Also take note of the relationship between the total area recorded in each photograph and its photographic scale. (Courtesy of E.M. Senese, Ontario Centre for Remote Sensing.)