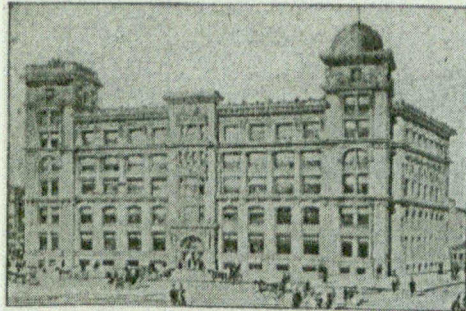


THE RICHMONDT CONDUIT & MFG. CO., LIMITED
 SOLE MANUFACTURERS OF
RICHMONDT ELECTRO-CALVANIZED CONDUIT TUBING AND FITTINGS



Contractors use it because—It Saves Time and Money. Supply Dealers carry it because—It Sells Itself.
 Architects specify it because—It fills the Underwriters' requirements.
 FACTORY AND OFFICE: 15, 17 and 19 Jarvis Street, TORONTO, CANADA.



GRAND TRUNK OFFICE BUILDING.

The largest and most modern Office Buildings, Hotels and Factories are equipped with the

Webster System.
of Steam Circulation

Our 1902 Illustrated Catalogue gives a full description of this System, and will be mailed on application.

DARLING BROS.

“Reliance Works,” Montreal.

Cable Address:
 GILMOUR, TRENTON

MAIN OFFICES:
 TRENTON, ONTARIO

CODES (A B C LUMBERMAN'S ZEBRA)

Established 1820

Established 1820

GILMOUR & CO., LTD.

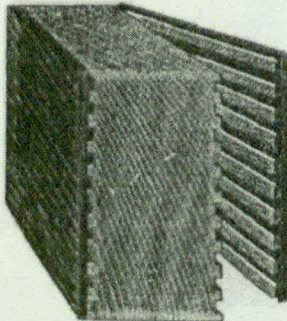


TRENTON
 CANADA



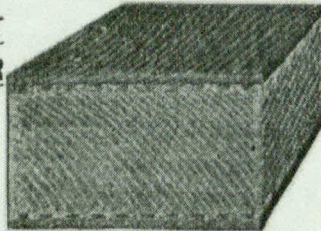
BRANCH OFFICES IN

- London, Eng.
- New York
- Chicago
- Glasgow
- Cape town, S. Africa
- Sydney, Australia

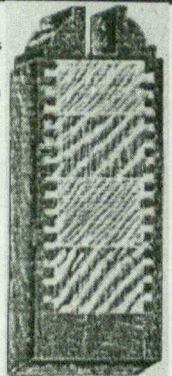


SECTION SHOWING PROCESS

PATENT
LUMBER



SECTION PATENT LUMBER



GTILE SECTION

CAPACITY OF MILLS & FACTORIES
25,000,000 FEET PER YEAR
 OUTPUT;
300,000 DOORS PER YEAR

SAW MILLS, PATENT LUMBER, DOOR, SASH, BOX AND VENEER FACTORIES

SASH, DOOR AND BOX FACTORY GOODS, LATH, SHINGLES, RAILROAD TIES, TELEGRAPH POLES AND POSTS, JOINERY, FINE INTERIOR FINISH, HARDWOOD FLOORING, ETC. EGG CASES, EGG FILLERS

WRITE OR WIRE FOR SAMPLES AND PRICE LISTS

Responsible Agents Wanted in All Parts of the World

Gilmour & Company, Limited

ORDERS PROMPTLY FILLED

TRENTON, CANADA