

aa. Antennæ more slender; segments 5, 6 and 7 slightly less than two-fifths as wide as long; segments 1 and 2 nearly concolorous with body; segment 3 pale yellow; segments 4 to 8 bright lemon-yellow. Prothoracic spines large, rather prominent; mid-laterals present, fully as long as anterior marginals . . . . . *P. citricornis*, sp. nov.

The measurements of the female of this species are as follows: Total length, 2.27 mm. (2.08 to 2.46 mm.); head, length, .32 mm.; width, .21 mm.; prothorax, length .16 mm.; width (including coxæ) .37 mm.; pterothorax, width, .42 mm.; abdomen, width, .48 mm.; tube, length, .22 mm.; width at base, .078 mm.; at apex, .043 mm. Antennæ: 1, 42 $\mu$ ; 2, 64 $\mu$ ; 3, 115 $\mu$ ; 4, 109 $\mu$ ; 5, 92 $\mu$ ; 6, 87 $\mu$ ; 7, 70 $\mu$ ; 8, 41 $\mu$ . Total, .620 mm.

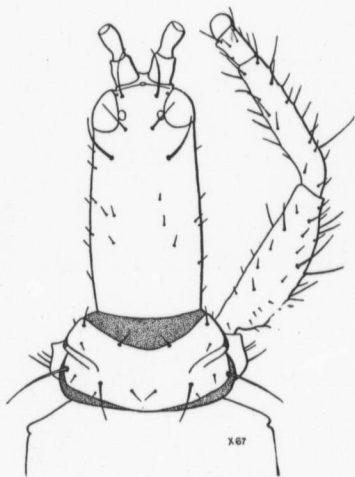


FIG. 16.—*Megalothrips* (?) *spinosus*.

Described from several macropterous females from the following localities: Illinois—Dubois, Duquoin, Odin, Pulaski, on hickory leaves (L. M. Smith). Pennsylvania—Harrisburg, Rockville, "on wild grape." The dates range from April 28 to July 16.

*Megalothrips* (?) *spinosus*,  
sp. nov. (Figs. 16  
and 17.)

*Female*.—Length about 4 mm. Colour nearly uniform black, excepting tarsi, which are dark blackish-brown.

Head slightly more than twice as long as wide, broadly rounded in front, sides subparallel;

dorsal and lateral surfaces finely transversely striate, sparsely and briefly spinose; anterior portion of head with two pairs of prominent, pointed bristles in addition to the postocular, a shorter pair with their bases slightly behind the posterior ocelli, and a longer pair equal in length to