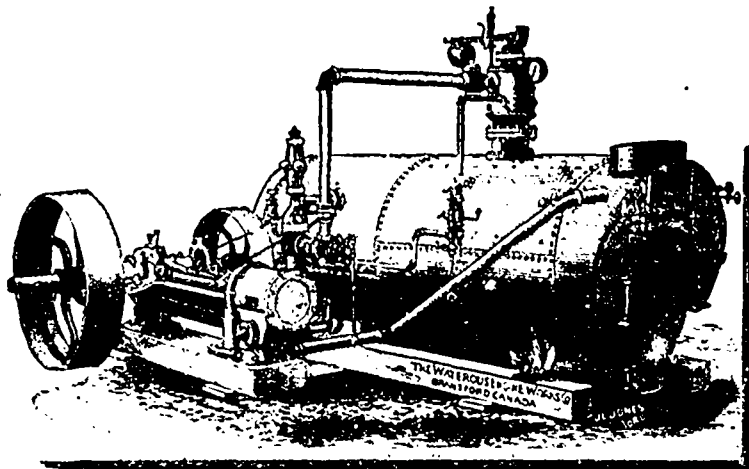


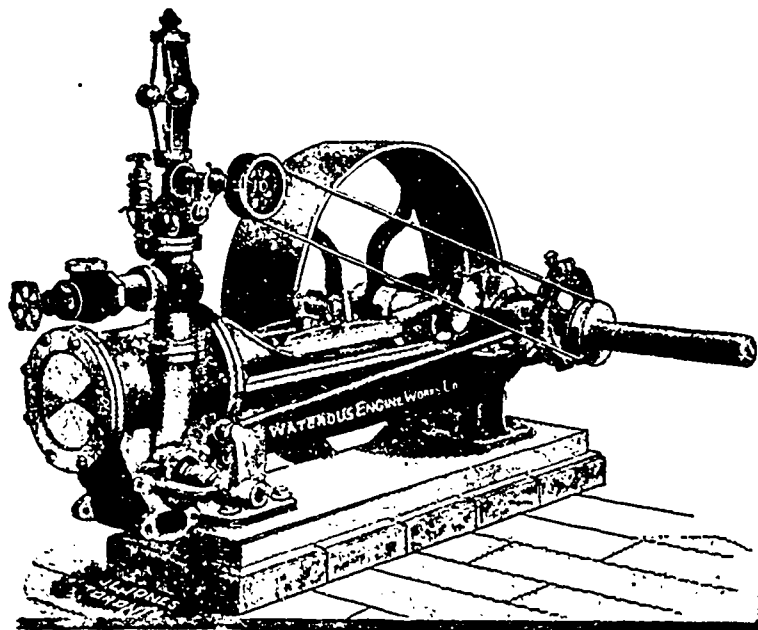
ENGINES, SAW MILLS, SHINGLE and LATH MILLS

SEND FOR NEW SAW MILL CATALOGUE.

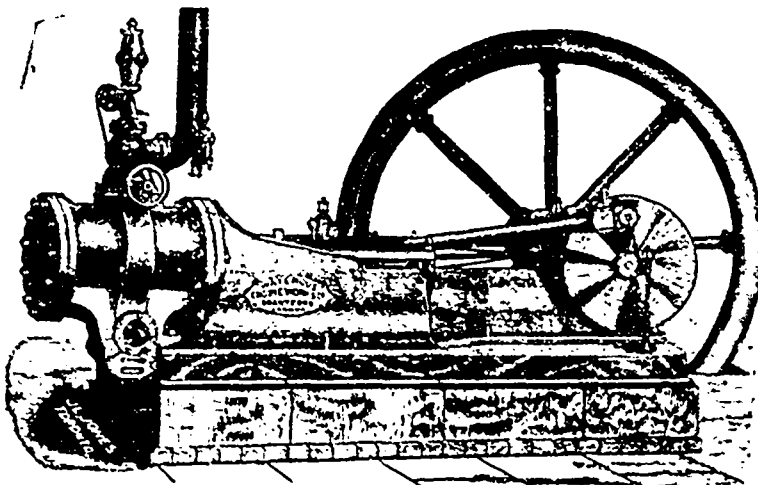
100 Page ILLUSTRATED CATALOGUE on SAWS
AND MILL SUPPLIES.



Return Tubular Firebox Boilers of all Sizes on
Skids or Wheels.

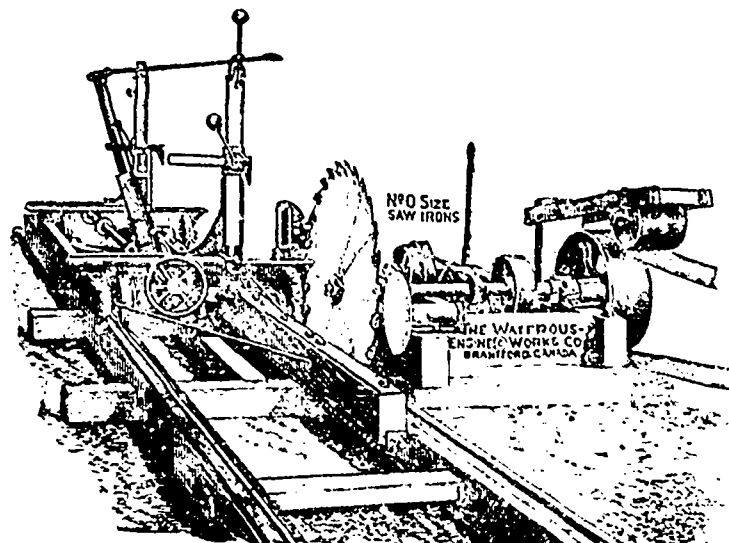


This Style made in 12, 16, 20, 25, and 30 Horse Power.



Best Saw Mill Engines 30 Horse Power up.

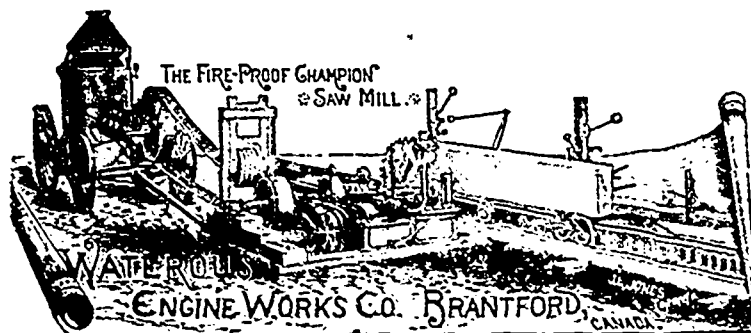
THE BEST MATERIAL AND WORKMANSHIP.



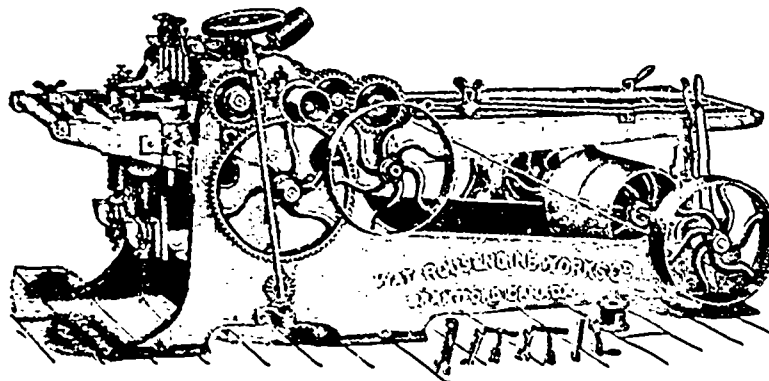
The above Cnt represents our Farmers' and Threshers' Saw
Irons, Very Cheap. Have Knight or Peel Dogs, V Track,
Patent Lumber Gauge and Saw Guide.

SEND FOR REPORT OF A 25 HORSE POWER CHAMPION SAW MILL

Cutting Lumber for the CANADA PACIFIC SNOW
SHEDS, at Dugan's Siding, Roger's Pass, B.C.
Mill was running 28 days after it was loaded on the Cars
at Brantford, and in two months run over 1,100,000
feet of 1 inch Lumber, and 3 & 4 inch Plank—all
cut to widths and edged on large Saw.



WOOD WORKING MACHINERY.



Waterous Engine Works Co., Brantford and Winnipeg

EASTERN OFFICES—154 St. James St., Montreal. 30 Paul St., Quebec.