

# CROW'S NEST PASS COAL CO., Ltd.

## DIRECTORS:

GEORGE A. COX, President.  
ROBERT JAFFRAY, H. M. PELLATT, AND  
G. G. S. LINDSEY, Vice-Presidents.  
E. R. WOOD, Treasurer.  
G. G. S. LINDSEY, Secretary  
THOS WALMSLEY, JAMES MASON, FREDERICK NICHOLS,  
DAVID MORRICE, J. D. CHIPMAN, J. A. GEMMILL, WM. FERNIE,  
AND C. C. DALTON.

**Head Offices—TORONTO, ONT.**

British Columbia Offices—Ferne, B.C.

## BITUMINOUS COALS AND COKE

Mines and Ovens at Coal Creek, Michel and Morrissey, B.C.  
Present Capacity of Mines 1,000,000 tons of coal per annum.  
Coke Ovens 350,000 tons per annum.

We would call attention to the superior quality of our Michel Blacksmith Coal, suitable for large forgings. Can be shipped at reasonable prices to all parts of British Columbia, the Northwest Territories and Manitoba

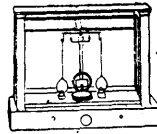
This Company also owns the Fernie and Morrissey Mines townsites, which offer investments in town lots that cannot fail to prove productive.

Having a large amount of development under way, there is always work for coal miners at good wages, and it may be said that there are few places in the world where labor of all kinds can earn more net money under agreeable conditions.

**G. G. S. LINDSEY,**  
Third Vice-President,  
Toronto.

**THOS. R. STOCKETT, Jr.,**  
General Superintendent,  
Ferne, B.C.

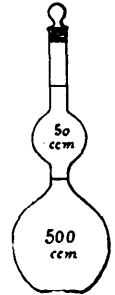
## Assayers Supplies CHEMICAL APPARATUS



Prospectors' Outfits Fine Chemicals

Miners' Outfits Heavy Chemicals

Correspondence invited.  
Prompt deliveries.



**The Chemists & Surgeons Supply Co. Ltd.**

CHAS. L. WALTERS (12 years with Lyman Sons) Manager

818 Dorchester St.

MONTREAL.

## SPRINGHILL COAL.

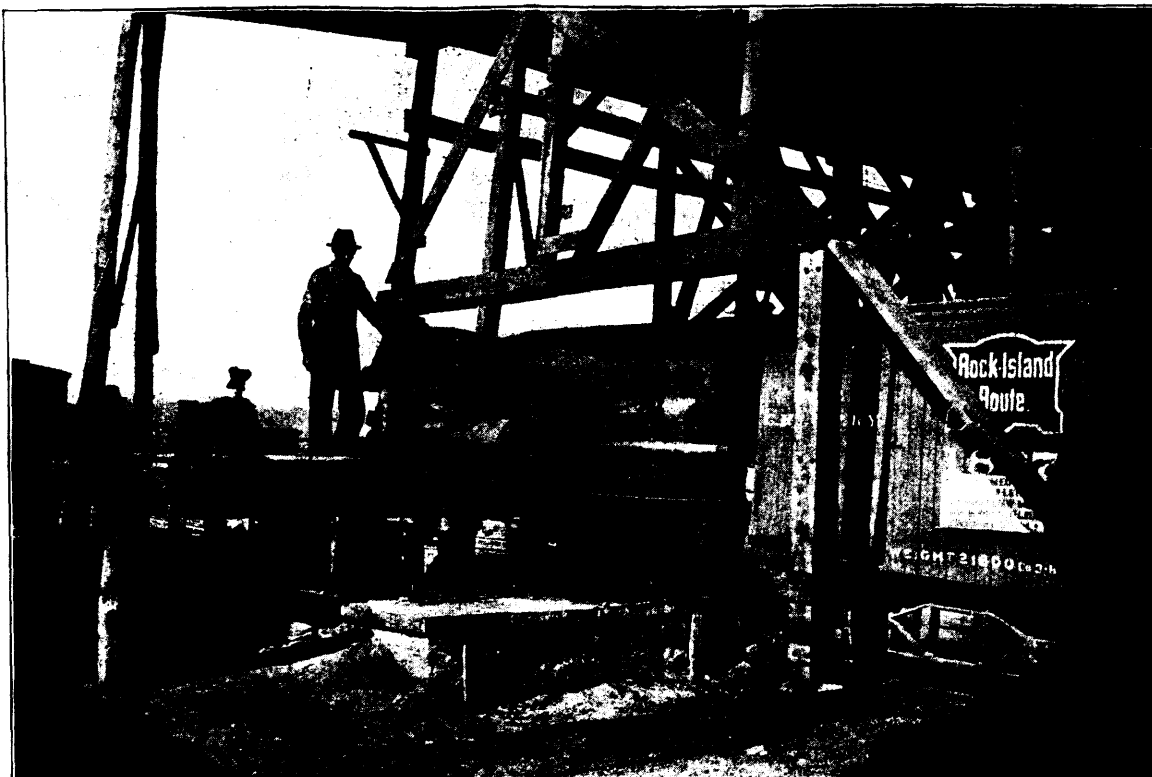
**The Cumberland Railway & Coal Company**

Are prepared to deliver this well known  
Steam Coal at all points on the lines of  
G. T. R., C. P. R. and I. C. Railways.

**Head Office: 107 ST. JAMES STREET, MONTREAL**

Address: P. O. BOX 396.

# Ottumwa Box Car Loader



The only practical method of loading coal in box cars.

It handles the coal carefully and does not break the coal or cars.

By using the OTTUMWA LOADER you can save enough in a few months to pay for the plant.

Every well equipped mine should have an OTTUMWA BOX CAR LOADER.

Send for Catalogue.

**Ottumwa Box Car Loader Co.**

Chicago Office—1035 Old Colony Bldg.

General Offices and Factory—OTTUMWA, Iowa, U.S.A.