

New York Milk-Fed Chicken

10 CASES ex. S.S. ROSALIND.

"BLUE NOSE" PASTEURIZED BUTTER.

SPECIAL 175 HALF BRLS. PURITY FLOUR.

BLUE POINT OYSTERS 30c. DOZEN.

W. E. BEARNS

"THE HOME OF GOOD THINGS TO EAT!" DUCKWORTH ST. RAWLINS' CROSS. 379. PHONE 971.

Better Clothing

It is by making better clothing—not cheaper—that we are able to hold and increase our patronage. Always keeping a large stock of British Woollens—in Tweeds and Serges, you are assured of getting first-class material. As to the cut, making and trimming of our garments, we can only say "when better Suits and Overcoats are made, SPURRELL will make them."

Spurrell The Tailor

St. John's and Grand Falls. 365 Water St. Phone 574

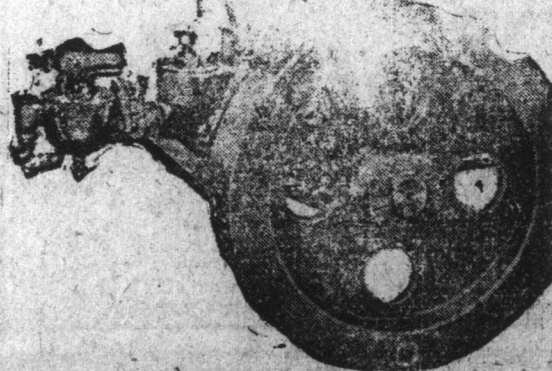
Acadia Engines

MARINE AND STATIONARY.

The most reliable, the neatest looking, the speediest type, and the best made Engine.

TWO and FOUR CYCLE. 3 to 80 H.P.

STRONG SPIDY



Acadia specifications combine the most liberal dimensions and highest quality at the lowest price. ACADIA stands for speed, simplicity and durability, being perfectly balanced and of strong construction.

We also have schooner's Heaving and Hoisting Equipments, and all kinds of Engine Accessories.

Acadia Gas Engines, Ltd.

ST. JOHN'S.

oct5,6m, eod

Now is the time to make your wife and family a

CHRISTMAS GIFT

REALLY WORTH WHILE.

A new Range would give her encouragement to bake and cook all the nice things better this Christmas.

TWO OF THE BEST RANGES

Modern Alaska Hillcrest

SEE THEM IN OUR WINDOW!

John Clouston

172-174 DUCKWORTH STREET.

Phone 406 P.O. Box E-5166

oct7,11

CONFEDERATION LIFE ASSOCIATION



Head Office Building, Toronto, Canada.

ERNEST FOX, Manager for Nfld. WALTER F. RENDELL, Special Representative

GET IT AT GEAR'S

Hall Stoves

3 SIZES NOW IN STOCK.

REMEMBER

The No. 15 Quebec Heater

YOU CANNOT DO BETTER.

GEAR & CO., Ltd.

PHONE 404 340 WATER ST.

nov2, eod, 11

Get Busy, Children!

Tell Daddy to remember EVERY LID TAKEN FROM A QUART TIN OF "MATCHLESS" Paint is worth 1,500 Votes in The Majestic Theatre Pony Contest. For every Dollar's worth of other products manufactured by us, you gain 1,000 Votes. When buying insist on "MATCHLESS" Paints, Varnishes, Enamel, Shelacs, Putty or Oiled Clothing, Leggings, "STANYL" Disinfectant.

ROLL UP YOUR VOTES.

Standard Manufacturing Co. Limited

nov9,11

Just Arrived:

DROMEDARY GOLDEN DATES.

Extra Fancy Dates only, are packed under the Dromedary Label, so that when you buy Dromedary Package Dates you can rest assured that you are getting the best that money can buy.

J. J. ROSSITER,

Distributor for Newfoundland.

Phone 549-2094 for Prices. Box 337

oct11

THE LIVERPOOL & LONDON & GLOBE INSURANCE CO., LTD.

A MESSAGE TO MOTOR CAR OWNERS:—Your Car will soon be stored for the winter months. Are you protected against loss by fire? If not we shall be glad to take care of your insurance requirements.

EXCELLENT SERVICE.

BOWRING BROTHERS, LIMITED

AGENTS FOR NEWFOUNDLAND.

June18,3m, eod

SCREENED NORTH SYDNEY COAL

To arrive shortly a vessel cargo of the Best Screened North Sydney Coal.

IN STOCK:

BEST WELSH ANTHRACITE COAL.

SCOTCH HOUSEHOLD COAL.

W. H. HYNES

Water Street East. Queen Street. Phone 618. Phone 1483

oct4, eod, 11

Regular sailings of the famous O' steamers FROM HALIFAX, N.S. TO CHERBOURG AND SOUTHAMPTON S.S. "ORBITA" Special Christmas Sailing December 14.

THE ROYAL MAIL STEAM PACKET COMPANY HALIFAX, N.S.

nov18,19,20,25,27,dec2,4,9,11

THE CANADA STEAMSHIP LINES, Ltd.

FREIGHT SERVICE

MONTREAL & CHARLOTTETOWN TO ST. JOHN'S, NEWFOUNDLAND.

SAILINGS FOR NOVEMBER.

| From Montreal: | S.S. FEVERIL | Nov. 24th | From Charlottetown: | Nov. 27th |
|----------------|---------------|-----------|---------------------|-----------|
| Nov. 24th | S.S. FEVERIL | Nov. 24th | Direct | Nov. 27th |
| Nov. 27th | S.S. AIREDALE | Nov. 27th | Direct | Nov. 27th |
| Nov. 30th | S.S. CEUTA | Nov. 30th | Dec. 3rd | Dec. 3rd |

For Freight Space, rates, etc., apply to The Canada Steamship Lines, Ltd., McGill Street, Montreal.

HARVEY & CO., LTD., St. John's, Nfld., Agents.

June15,m,w,11

TORONTO TO—DETROIT CHICAGO.



TRAVEL BY NATIONAL LINES "INTERNATIONAL LIMITED."

Leaves Bonaventure Station, Montreal at 10.00 a.m. Daily. Direct connection from Halifax or North Sydney by "OCEAN LIMITED."

For Fares, Reservations, etc., apply to R. H. WEBSTER, General Agent.

may2, eod, 11

Newfoundland Government Railway

SHIPPERS:

To-day,—ask our Express Representatives about C.O.D. shipping arrangements. Do not neglect this opportunity to increase your Mail Order business. Adequate protection for shippers, first and last.

FREIGHT ACCEPTANCES—BAY STEAMSHIP SERVICES—PLACENTIA BAY.

Freight for Merasheen route, Bay Run, will be accepted on Friday, this week, instead of Tuesday.

Owing to S.S. ARGYLE being off schedule, regular freight days are cancelled; therefore freight for Presque Route (West Run) will NOT be accepted this Thursday, Nov. 26th. Next acceptance will be advertised.

NOTRE DAME BAY STEAMSHIP SERVICE—S.S. CLYDE.

Freight for Brown's Arm, Laureton, Potwood and all other ports of call, accepted at Freight Shed Wednesday, Nov. 25th, from 8 a.m. to 5 p.m.

FREIGHT ACCEPTANCE.

NORTHERN STEAMSHIP SERVICE—S.S. KYLE. Freight for ports on above route accepted at Crosbie & Co.'s Wharf Thursday, Nov. 26th, from 10 a.m. to 5 p.m., and up to noon Friday, Nov. 27th. Ports of call same as Prospero.

NOTICE OF SAILING—S.S. PROSPERO—NORTHERN STEAMSHIP SERVICE.

S.S. PROSPERO will leave Crosbie & Co.'s wharf 10 a.m. Thursday, Nov. 26th, for regular ports on above route.

PRESENT SCHEDULES OF PASSENGER STEAMSHIP CONNECTIONS.

Train leaving St. John's 1 p.m. Thursday, Nov. 26th, will connect with S.S. HOME at Lewisporte for ports on Green Bay Service.

Train leaving St. John's at 1 p.m. Sunday, Nov. 29th, will connect with S.S. SAGONA at Humbermouth, for regular ports on the Humbermouth-Battle Harbor Service.

Train leaving St. John's 8.45 a.m. Thursday, Nov. 26th, will connect with S.S. ARGYLE, at Argentia, for Placentia Bay ports (Presque Route—West run).

Train leaving St. John's 1 p.m. Sunday, Nov. 29th, will connect with S.S. CLYDE at Lewisporte, for ports on Notre Dame Bay Service.

Red Cross Line

NEW YORK. HALIFAX. ST. JOHN'S

SCHEDULE SAILINGS FOR DECEMBER.

| FROM NEW YORK | FROM ST. JOHN'S |
|-----------------|-----------------|
| 12 o'clock Noon | 11 A.M. |
| December 2nd | RODALIND |
| December 8th | SILVIA |
| December 16th | RODALIND |
| December 23rd | SILVIA |
| December 30th | RODALIND |

THROUGH RATES QUOTED TO ALL PORTS. WINTER PASSAGE RATES NOW EFFECTIVE.

Round trip tickets issued at special rates with six month stop-over privileges.

For further information, apply to

BOWRING & COMPANY, 17 Battery Place, New York. G. S. CAMPBELL & CO., HALIFAX, N.S. HARVEY & CO., LTD., ST. JOHN'S, N.F.L.D. Agents.

S.S. "HETHPOOL"

| Leaves BOSTON for HALIFAX | Leaves HALIFAX for ST. JOHN'S | Leaves ST. JOHN'S for N. SYDNEY | Leaves N. SYDNEY for HALIFAX | Leaves HALIFAX for BOSTON |
|--|-------------------------------|---------------------------------|------------------------------|---------------------------|
| Tues. 6 p.m. | Sat. 10 a.m. | Wed. 10 a.m. | Fri. 10 a.m. | Sat. 10 a.m. |
| Dec. 1st | Dec. 5th | Dec. 8th | Dec. 11th | Dec. 14th |
| Dec. 15th | Dec. 19th | Dec. 23rd | Dec. 26th | Dec. 29th |
| Fare: 1st Class St. John's and Boston | ... | ... | ... | ... |
| Fare: 2nd Class St. John's and Boston | ... | ... | ... | ... |
| Fare: 1st Class St. John's and Halifax | ... | ... | ... | ... |
| Fare: 2nd Class St. John's and Halifax | ... | ... | ... | ... |

Passengers, Mail and Freight. On arrival steamer from Boston, Leaves HALIFAX Thursday, Noon

For Charlottetown, North Sydney, St. Pierre, Paul's, Curling, Corner Brook, Humbermouth, Meadows, Trout River, Bonnes Bay, Lark Harbor, Fort au Port, Sandy Point, Codroy, St. Paul's, Nell's Harbor, New Haven, Ingoulsh, North Sydney.

Nov. 26th. December 10th. (Or until navigation closes).

FARQUHAR STEAMSHIP COMPANIES HALIFAX, HARVEY & COMPANY, LIMITED, Agents, St. John's. (Above dates subject to change without notice.)

sept21,11

FURNESS LINE SAILINGS

From Liverpool to St. John's via Boston to Halifax to St. John's, N.F. Halifax, N.S. Halifax to St. John's to Liverpool.

NEWFOUNDLAND—November 18th. SACHEM—Nov. 24th. Dec. 1st. Dec. 5th.

These steamers are excellently fitted for cabin passengers. Passengers for Liverpool must be in possession of Passports. Through rates quoted all cargo for U. S. and Canadian ports.

For rates of Freight, Passage, and other particulars, apply to

FURNESS WITBY & COMPANY LIMITED

PHONE: 130. WATER STREET EAST.

EIGHTEEN P
WEATHER F
TORONTO (Noon)
Tada, partly cloud
showers or snow dur
Friday—West wind
and rather cold.
ROPER & THOMP
Ber. 42.

VOLUME XI

IF YOU FLO

Auction

THE PEOP
AUCTION

AUCTION

COMPLETE HOUS
FURNITURE and

at the Residence of
Walsh, 350 City
Street (opposite
on to-morrow, Fri
p.m.

FRIDAY'S SA
e. 1 Bedroom—1 oak
beveled mirror, 1
rter bedstead, 1
dress, 1 wicker rock
bedroom chair, 1 oak
table, new canvas
e. 1 Singer hand sew
heater.

e. 2 Bedroom—1 W
d. springs and matt
case with large
(mahogany finish)
ch. 1 gen's high bo
h). 2 overstuffed
re table, 1 W.E. P
or overmantel, 1
e. 1 draft screen,
rd.

ald's Room—Thre
d. spring and matt
canvas and 1 mat
e. 3 Bedroom—1
g and 2 mattress
wers, 1 dressing
e. 1 chair.

e. 4 Bedroom—Thre
ead, spring and m
glass, 1 W.E. ch
wers.

R.—Time of Sale: 4
noon.

Goods must be paid
delivery of immediate

C. O'Driscoll

THE
EARN & BA
AUCTION

MOTOR TR
aturday, Nov.
at 12 o'clock
orris Bldg., Qu
will sell by Public
on Hudson Motor
order.

EARN & BA
21, (news21)

PERCHA
AUCTION

AUCTION

aturday 1
Stove Castings

the above may be
Mr. Geo. H. P
State will take
some, Adelaide
y.

W. E. PERCY

PAY CASH DO
Women's and
Apparel—1
some good
rel. Before
re give us a
or by ph
HAND STON
1911