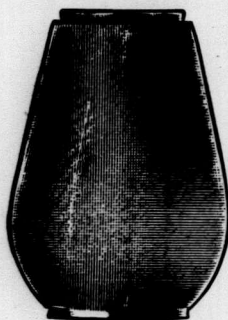


ARE YOU USING OUR—



Cold Blast
or Jubilee
Globes

Aetna or
Quaker Flint
Chimneys?

Give them a Trial.
THE SYDENHAM GLASS CO.,
of WALLACEBURG, Limited.



For Sale Everywhere.

ASK FOR
MOTT'S.



MR. GROCER—

The profit in your business rests upon little things—"mites." If you are forced by the scales you are using to give 50 customers daily one cent each in down or over-weight, you are 50c. poorer and they do not know of or feel any benefit. If you use a Toledo Automatic, Springless Computing Scale the 50 customers will give you the one cent each that you would otherwise give them and you gain 50c., a difference in your favor of \$1.00 on the day's business and the customer gets his just dues, so loses nothing.

MADE IN CANADA.

For Descriptive Catalogue and all information write to

DEAN & McLEOD, Canadian Agents,
The Toledo Computing Scale Co.,
HAMILTON, ONT.

Toronto Agency: 156 Bay St.
Montreal Agency: 251 St. James St.

James Ewart

MANUFACTURER OF

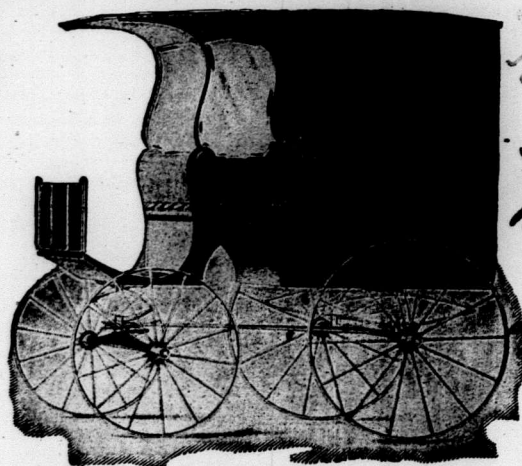
High-Grade Delivery

WAGONS

Grocer, Baker, Confectionery, Laundry
Wagons of every description.

257-9 QUEEN ST. EAST
TORONTO.

Write For Prices. Phone Main 1188.



RETURNED
JUL 10 1903
L. B. Smith
Page 77

Character vs. Reputation.

Your character may be ever so bad and your reputation good, or vice versa.

Our brands of Salmon have both and this is a pretty good guarantee of quality.

Two good lines at present in stock :

**Maple Leaf,
Lowe Inlet.**

The British Columbia Packers' Association
VANCOUVER, B.C.