



Let us send you our book "The evolution of the Cookstove"—an interesting history of cooking. It also gives a clear, simple description of the Dominion Pride Range—complete in every detail. Reading this book is like examining the range itself.

Send for a copy.

COUPON

Canada Malleable & Steel Range Manufacturing Co., LIMITED
OSHAWA.

Send a free copy of your book "The Evolution of the Cookstove."

NAME _____
ADDRESS _____

Save 30% on your New Range

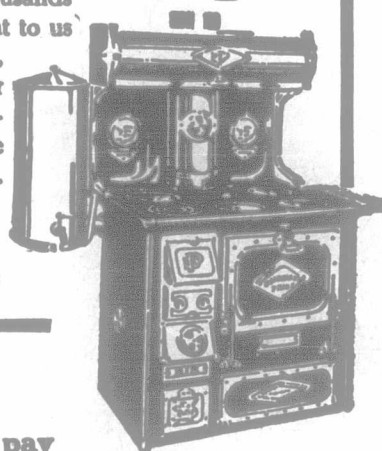
That's about \$20.00 isn't it? And you can save it by ordering direct from the factory (the biggest malleable range plant in Canada.)

Dominion Pride Range is the range you would choose at any price—a beautiful steel range with unbreakable doors, castings and lids of malleable iron—a range that saves coal—a range so solidly built that with care it will last a lifetime.

And you can secure a Dominion Pride Range by making a small payment with your order—the balance on terms to suit your convenience.

Dominion Pride Range

Thousands upon thousands of Canadians have sent us direct for their ranges, and we have yet to hear a complaint. Our unconditional guarantee goes with every range.



We pay Freight

No more repair bills for that Roof

Think of the money you could have saved if your buildings had been covered with a roofing that never had to be coated, graveled or repaired! You'll never have to spend a cent for coating or repairs if you use

J-M ASBESTOS ROOFING

It is the cheapest per-year roofing on the market. J-M Asbestos Roofing is mineral throughout—layer upon layer of pure Asbestos (rock) fibres everlastingly cemented together with Trinidad Lake Asphalt—literally a *sheet of pliable stone*. Contains no perishable substance. Has been in service on hundreds of buildings for over a quarter century and is sound today.

Keeps buildings cool in summer, warm in winter, and affords perfect fire protection. Anyone can apply it. Don't take a substitute. Our nearest Branch will ship direct if your dealer can't supply it. Write today for sample and Book No. 2574

The Canadian H. W. Johns-Manville Co., Limited

Manufacturers of Asbestos and Magnesia Products ASBESTOS Asbestos Roofings, Packings, Electrical Supplies, Etc.

Toronto Montreal Winnipeg Vancouver

2 IN 1

SHOE POLISH

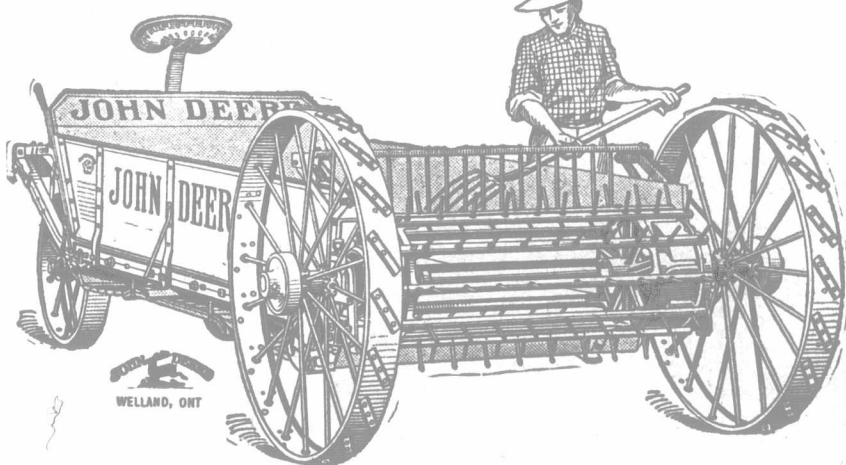
The EASY polish Makes Shoes Last Longest

F.F. DALLEY CO., Ltd.
Buffalo, N. Y.
Hamilton, Ont.

10
CTS.

John Deere Spreader

The Spreader with the Beater on the Axle



Revolutionizing the Spreader Business Simplest and Strongest Spreader

On the John Deere Spreader, the Spreader with the Beater on the Axle, two hundred working parts that continually give trouble, are done away with. This spreader is so simple and strong that it does not get out of order. It has no clutches, no chains, no adjustments.

The John Deere Spreader is the greatest improvement in spreaders since their invention. It is as much in advance of ordinary spreaders as the self-binder was over the old reaper.

The Beater on the Axle

Mounting the beater on the axle makes the John Deere Spreader possible. This feature is fully patented. You cannot get it on any other spreader. The beater on the axle does away with all chains and clutches. It puts the strain and stress of spreading on the main axle—where it belongs—not on the sides of the box or the frame of the spreader.

Mounting the beater on the axle makes the John Deere Spreader easy to load—low down.

Only "Hip-High"

Sides of the John Deere Spreaders are only "hip-high." The first three feet you lift a fork of manure are easiest of all. From there on to the top of the ordinary spreader is hard work.

You lift manure only three feet with the John Deere Spreader. You always see into the spreader, just

Valuable Spreader Data Free—Get this at once. It contains reasons for using manure—how to apply it to the land, how to store it, and a description of the John Deere Spreader, the Spreader with the Beater on the Axle. Ask for this Data as Package No. Y119

John Deere Plow Company, Limited, Toronto, Ontario

where each forkful is needed. Wheels do not interfere with loading.

Few Parts

There are no clutches to get out of order, no chains to give trouble, and no adjustments to be made on the John Deere Spreader. On old style spreaders, ten to twenty adjustments are necessary before they will work at all. Any one of these, wrongly made, might put the spreader out of business.

To start spreading with a John Deere Spreader, move the lever at the driver's right back until the finger or dog meets the large stop at the rear of the machine—there is no clutch.

The John Deere Spreader does not get out of order. It is always ready for use.

Roller Bearings

Roller bearings, few working parts, the center of the load comparatively near the team and the weight distributed over four wheels, make the John Deere Spreader light draft. There are four sets of roller bearings, two between the main axle and the beater, and two in the front wheels.

Bridge-Like Construction

The substantial steel frame on John Deere Spreaders has high-carbon structural steel side sills. Like modern railway bridges it is built on the best known principles of steel construction.

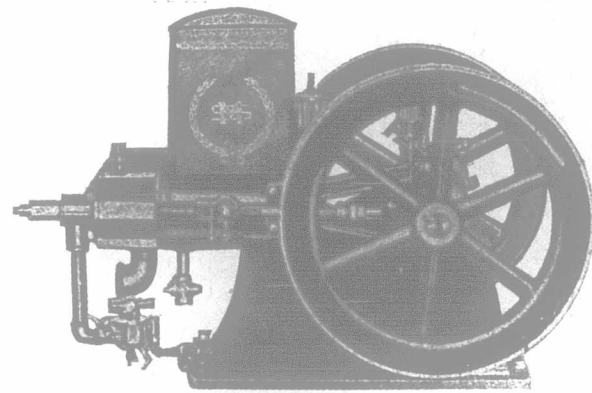
It is securely bolted, insuring rigidity and perfect alignment, even after years of use.

THE ST. MARYS "KOAL-OIL-KING"

Gas, Gasoline and Coal Oil Engines are specially adapted for work on your farm.

The St. Marys is the only simple Engine. Easiest engine to start and operate. Anyone can run it. So simple that it can hardly get out of order. It has only one-third the number parts seen on other engines. Runs on one-third less fuel. Runs on gas, gasoline or Coal Oil. Gasoline is becoming higher in price all the time, so you will be money in pocket by having our Engine that runs on coal oil.

It is mounted on skids, ready to run. It will pump your water, grind your feed, saw your wood, run the cream separator, churn and washing machine by day and light your home with electricity by night.



All engines FULLY GUARANTEED and shipped ON 30 DAYS' FREE TRIAL to any Point in Canada. Write for further particulars of our 2½, 4 and 7 horse-power engines.

A. W. PARKS & SON

PETROLIA, ONT.