

FOUNDED 1866

ment.

sitting on the benches how the influence of the Educator the old simile of the pebble in the pool, his words and his inspiration kindled by him, spread out, like the widening pool, touching men and yet farther ahead, lives, extending their life is not a great man in any day who did not one time of the teacher in a class.

for regret that the examples given above, by name, the Canadian. There have been, are, real Educators in the information regarding present in the hands of the

all, what matter? In all beautiful—true education, helpful science, music, brotherhood—there can be line. Humanity is, and greater than nationality.

might we not make more of "Personally" in Canada? give more public appreciation who is really trying to high and right lines? accord to him the position which will guarantee him hearing? In short—should we rate that we ourselves are value to the children, the world, of "Educators, Per-

ognition must inspire any man or woman, to greater results, there is help like encouragement.

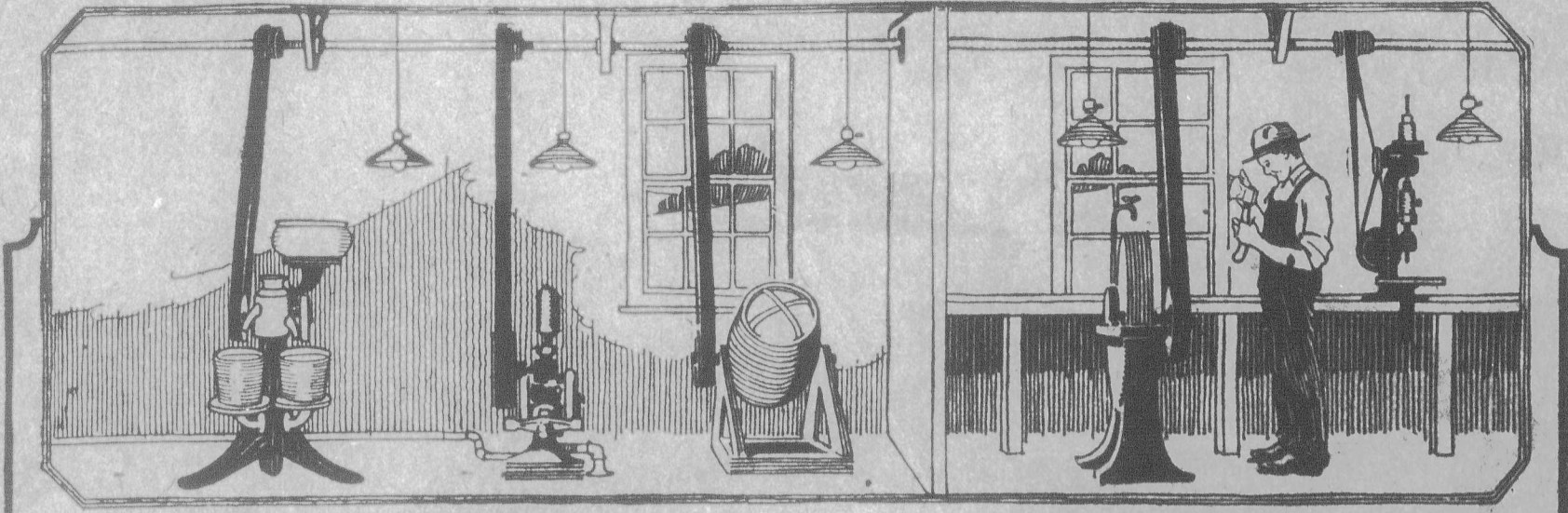
ago, in a small American town who had taught most of the women living there, celebrated birthday.—Rather honored it for her, for a was proclaimed and there were songs, centering about the who had meant so much to the celebrators and the town. . . . Some day, may begin such recognition for "Personally," not always, for the "advanced" man, and possibly not until teachers themselves, as a the full scope and dignity and a definite goal as the capable teaching and an recognition of a great re-



Cheese Factory:



S. S. No. 5 Lochiel. Most important institution in the cheese factory is a fore- The above school and fac- Glengarry County, Ontario.



### The "F" Power and Light Plant lightens work—brightens the home

Your home and farm buildings brilliantly lighted the moment you press a button. Your time and labor saved morning, noon and night. Your wife relieved of work and worry every day of the year. Your farm increased in value and earning power because you can undertake and accomplish more.

No matter where you live or what kind of farming you do, you will find in the utility of this plant the greatest source of comfort and satisfaction on your farm. The "F" Power and Light Plant is constructed as a separate unit plant, so that the full power of the 1½ h.p. "Z" engine can be utilized to run the separator, churn, grindstone, pump, washing machine, and any other light machinery.

40-Light Plant meets power needs of average farm

Direct belt drive not only saves the 50% power waste caused by driving machines by small electric motors, but also makes it unnecessary for you to buy individual motors.

This plant runs six hours on one gallon of fuel—kerosene or gasoline, send coupon to our nearest office for catalogue, which gives full particulars.

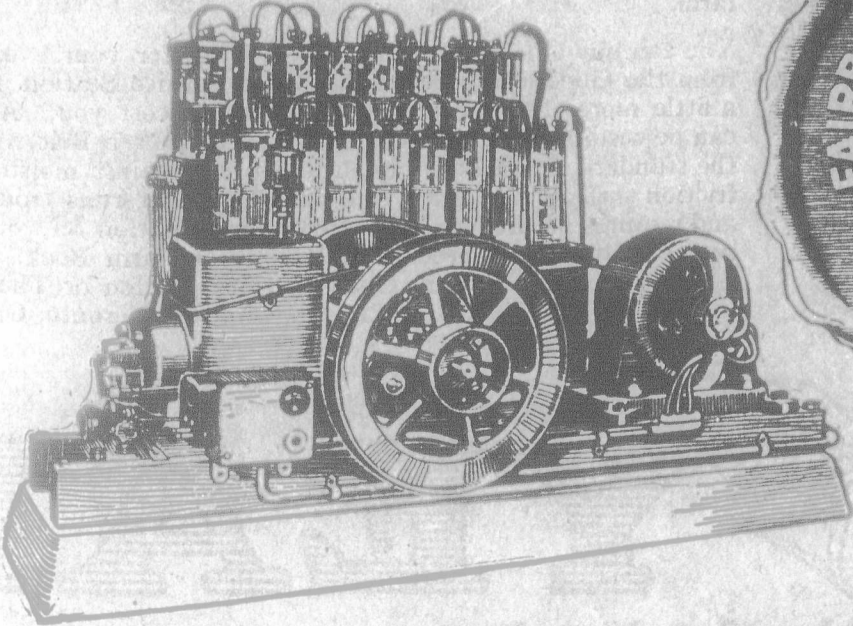
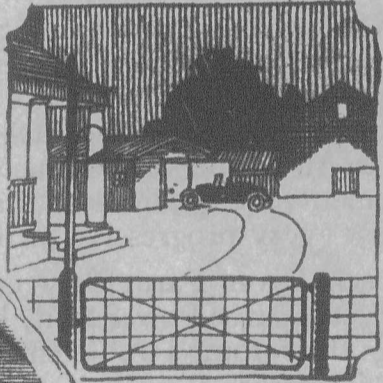
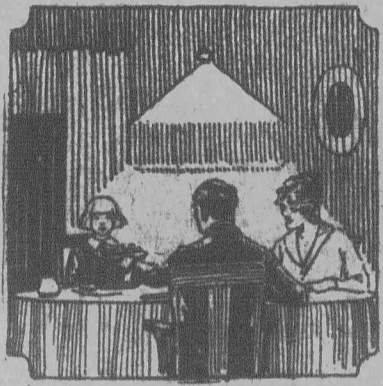
#### Agents Wanted

in every district to handle this biggest and easiest selling proposition and give owners the kind of service which has built the reputation of this Company.

Made in Toronto, Canada, and guaranteed by

## The Canadian Fairbanks-Morse Co. Limited

ST. JOHN QUEBEC MONTREAL OTTAWA TORONTO  
HAMILTON WINDSOR WINNIPEG REGINA SASKATOON  
CALGARY VANCOUVER VICTORIA



Clip Coupon Here  
The Canadian Fairbanks-Morse Co. Limited.  
Send me without obligation catalogue of Fairbanks-Morse Power and Light Plant.

Name \_\_\_\_\_  
Address \_\_\_\_\_