

# GILSON PRODUCTS

*"Goes Like Sixty"*

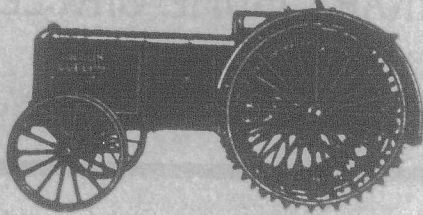
100% Service

## DON'T WASTE MONEY ON EXPERIMENTS!

For sixty years, we have steadily worked at raising the performance and efficiency of Gilson Products to their present standard recognized by men of discrimination, sound judgment and experience—successful men—as representing the highest standard of value to-day. Gilson Products are Dominant in Quality and Service.

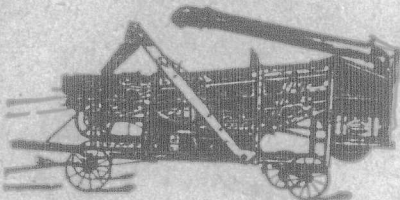
WE HAVE PAID FOR YOUR EXPERIENCE! When you purchase a Gilson outfit, you are assured of getting the maximum of SAFETY, SERVICE and SATISFACTION.

### A PRACTICAL TRACTOR FOR YOUR WORK

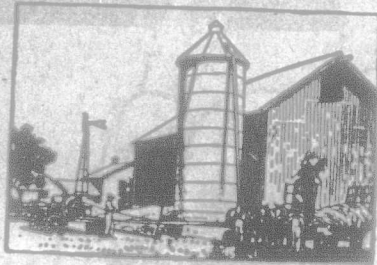


The Gilson Tractor will do your work. It is standardized throughout. It incorporates all the improvements of modern tractor engineering. The smooth running, powerful motor operates on either kerosene or gasoline—the transmission runs in oil and is absolutely dust-proof—the perfect radiator of large capacity—the simple clutch arrangements—ease of operation—the easy starting device—all are combined in one excellent machine. Sizes are 12-25 and 15-30. Write for free Tractor catalog and quotations.

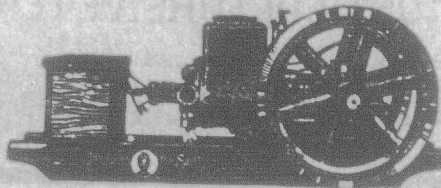
### THIS WONDERFUL LIGHT-RUNNING GILSON THRESHER



*"Goes Like Sixty"*  
Saves Time—Money—Labor. Be independent of the gang. Keep your farm free of weeds. Do your threshing when you please, with a 6 to 12 h.p. Engine and the Wonderful Light-Running Gilson Thresher. Furnished with or without Blower. Send for free catalog.



### THIS ENGINE WILL COST YOU NOTHING



*"Goes Like Sixty"*

You need an engine—get a Gilson on our easy payment plan—and it will pay for itself. You have the work for it to do this fall and winter—help is scarce and high-priced—save yourself a lot of worry and bother and enjoy that "feeling of security" which is such a definite part of the staunch, reliable Gilson Engine.

When you buy a Gilson Engine you buy reliable power plus service—the utmost economy. You get exclusive patented features, fully described in our catalogue, which will be sent you free—that will enable you to get greater service at less cost.

A smooth running, dependable motor, which will give you maximum power at minimum cost, day in and day out, all the year round. Write for catalogue No. 25. All sizes for all purposes.

### A "Gilsonized" Farm

Gentlemen—  
We have been running our 8 h. p. Gilson Engine for nearly four years. It has always given us the best of satisfaction.

We use it to run our N-13 in. Gilson Ensilage Cutter, and this fall we put thirty feet of corn in our "Gilson" Hyle Silo in seven hours. We run our 10 1/2 in. plate grinder, grinding at the rate of twenty-four bags of mixed grain per hour. The other day we ran the engine sawing wood, using four gallons of fuel in a ten-hours' run, wood being maple and beech.

Our little "Johnny-on-the-Spot" after all his years of service, is still on the job, as willing and useful as ever. Mother thinks the world of "Johnny," as he saves an inestimable amount of hard work, and we consider he has paid for himself over and over again.

I have operated and repaired different makes of engines, but I have not seen an engine yet that stands up with the Gilson for power and fuel economy per rated h.p.

Yours respectfully,  
MELVIN HUETHER,  
R.R. No. 4, Kitchener, Ont.

### "OVER THE TOP" OF THE HIGHEST SILO



*"Goes Like Sixty"*

The Wonderful Gilson Silo Filler is the one blower that will put the corn over the top of the highest silo—and the smallest size will do it with a 4 h.p. engine. There is a Gilson Silo Filler for every purpose—for the individual farmer, for the syndicate, and a very large capacity of machine for the jobber.

We positively guarantee every Gilson Silo Filler to cut and elevate more ensilage with the same power than any other blower cutter made.

With a Gilson Cutter you can cut your own corn at just the right time—no waste—no loss. Be independent of the cutter gang. Refill your silo without expense.

Write for free Silo Filler book to-day. It tells the Gilson story from start to finish—points out the advantages of the design, and describes the all metal construction in such a way that you will understand why the Gilson Cutter will do more work with less power than any other.

Fill out coupon below and send immediately.

### Singular Satisfaction

Gentlemen—  
I am sending you photograph of my Gilson Tractor and Gilson Thresher.

My tractor has been a source of singular satisfaction to me. When I bought it I was not positive that it would be a paying investment. I took the chance and am delighted with the results.

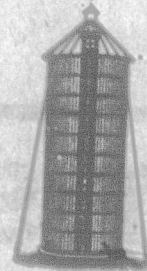
The tractor is invaluable for work at the draw-bar, such as plowing, harrowing, etc., and it is exceedingly valuable with the belt, where I do my own grinding and threshing, and I help out the neighbors quite a bit. The tractor is so simple, so easy to handle, so thoroughly reliable and willing, that we find lots of jobs for it and it does them all with the greatest economy and satisfaction.

The Gilson Thresher, which I purchased later, has more than met my expectations. It is the cleanest thresher I have ever seen, and has far more capacity than I expected or you represented.

Yours truly,  
D. McKENZIE, Glencara.

### HYLO SILO

*Sweet, Fresh Ensilage Down to the Last Forkful*



The Hyle Silo sets new and higher standards in silo construction and silo service.

The Hyle Silo insures perfect ensilage down to the last forkful—sweet, fresh and nutritious. The Hyle Silo is purchased by the modern farmer—the man who buys on a business basis—buys for the money it will make him. Some of the advantages of the Hyle Silo are as follows—

infinite superior material and machinery—exclusive and patented self-adjusting hoops, which automatically take up all the expansion and contraction—single-length and two-piece staves used exclusively—all staves tongued, grooved and bevelled with extraordinary accuracy, both sides and ends, making perfect self-draining, airtight joints—interchangeable perfect fitting doors with patent lock—steel ladder—rigid interchangeable door-frame construction—perfect anchoring system, etc.

The Hyle Silo will last indefinitely—it is airtight, leak-proof and storm-proof. It will pay for itself in profits earned in the first six months of use and thereafter it will continue to make money for you at no additional expense or attention.

Write for free silo book to-day showing detailed illustrations of special Hyle service features, and many letters and farm scenes of users.



### Mark X opposite the books you wish.

Each of our products is described and illustrated in a plain way so that you may easily understand the mechanical features that make Gilson Products yield supreme service. Send in the coupon for one or for all of the booklets. Your enquiry will be welcome.

## GILSON MFG. CO., LIMITED

609 York Street, Guelph, Ontario

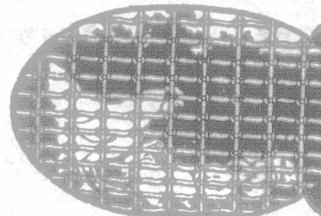
Thresher	<input type="checkbox"/>	Tractor	<input type="checkbox"/>	Wood Saw	<input type="checkbox"/>
Engine	<input type="checkbox"/>	Silo	<input type="checkbox"/>	Silo Filler	<input type="checkbox"/>
NAME .....					
ADDRESS .....					

THE MARTIN  
**DITCHER AND GRADER**  
DIGS YOUR DITCHES  
GRADES YOUR ROADS  
EASILY  
QUICKLY  
CHEAPLY



REVERSIBLE  
ADJUSTABLE  
DOES THE WORK OF 50 MEN  
SEND FOR FREE BOOKLET

THE PRESTON CAR & COACH CO LIMITED  
97 DOVER ST. PRESTON CANADA



### PEERLESS POULTRY FENCE

*A Real Fence—Not Netting*  
Strongly made and closely spaced—making it a complete barrier against large animals as well as small poultry. Top and bottom wires No. 9—intermediates No. 12 wire—made by the Open Hearth process which time and other tests have proven to be the best. Send for catalog. Ask about our farm and ornamental fencing. Agencies nearby everywhere. Agents wanted in unassigned territory.  
The Maxwell-Hoxie Wire Fence Company, Ltd.,  
Windsor, Man., Hamilton, Ont.



### DO YOU NEED FURNITURE

Write for our large, photo-illustrated Catalogue No. 7—It's free to you.  
THE ADAMS FURNITURE CO., Limited  
Toronto, Ontario

### Don't put your money into any piano until you have fully investigated the

## Sherlock-Manning

20th CENTURY PIANO—known as  
"Canada's Biggest Piano Value"  
Write Dept. 18 for Catalogue "1"  
THE SHERLOCK-MANNING PIANO CO.  
London (No street address necessary) Canada

## Cream Wanted

We supply cans. We pay express charges. We remit daily and guarantee highest market prices. For prompt service ship your cream to us.

Mutual Dairy & Creamery  
743 King St. W., Toronto, Ont.

Patent Solicitors—Fetherstonhaugh & Co.  
The old-established firm.  
Patents everywhere. Head Office: Royal Bank Building, Toronto. Ottawa Office: 5 Elgin St. Offices throughout Canada. Booklet free.