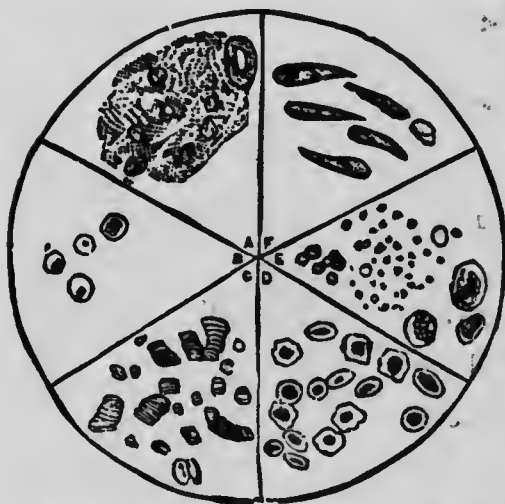


especially prepared for each individual case, and those who have been inmates of the Invalids' Hotel under our immediate supervision. Our unusually well-equipped laboratory, where successive analyses demonstrate practically every significant change in the urine as soon as it occurs, and the great experience of our physicians, gained by caring for hundreds of cases annually, enable them to prescribe medicines especially adapted to the requirements of each case.

### MENSTRUATION, SCANTY, PAINFUL AND PROFUSE

These conditions are usually overcome by the use of Doctor Pierce's Anuric Tablets and Doctor Pierce's Favorite Prescription. The "Anuric Tablets" should be taken immediately after meals in doses of one or two; the "Favorite Prescription" in the middle of the

forenoon, afternoon and on going to bed—a teaspoonful or two. They should be kept up steadily throughout the menstrual periods. In the interval between menstruations the "Anuric Tablets" should alone be used, taking one after meals three times a day, in order to bring about a condition of the genito-urinary organs that is free from irritation.



In division A is represented pus and mucus, with decom-

position indicating suppuration somewhere along the urinary tract. In B pus globules are alone represented. In the division marked C are shown blood corpuscles as they are arranged in blood drawn from a vein or an artery. D represents the same separated, as they always are when present in the urine. In E highly magnified oil globules are represented. If present in the urine, they indicate disease of the kidneys. In F are represented epithelial cells, the presence of which, in large numbers, is indicative of diseases of the mucous lining of the urinary organs.