

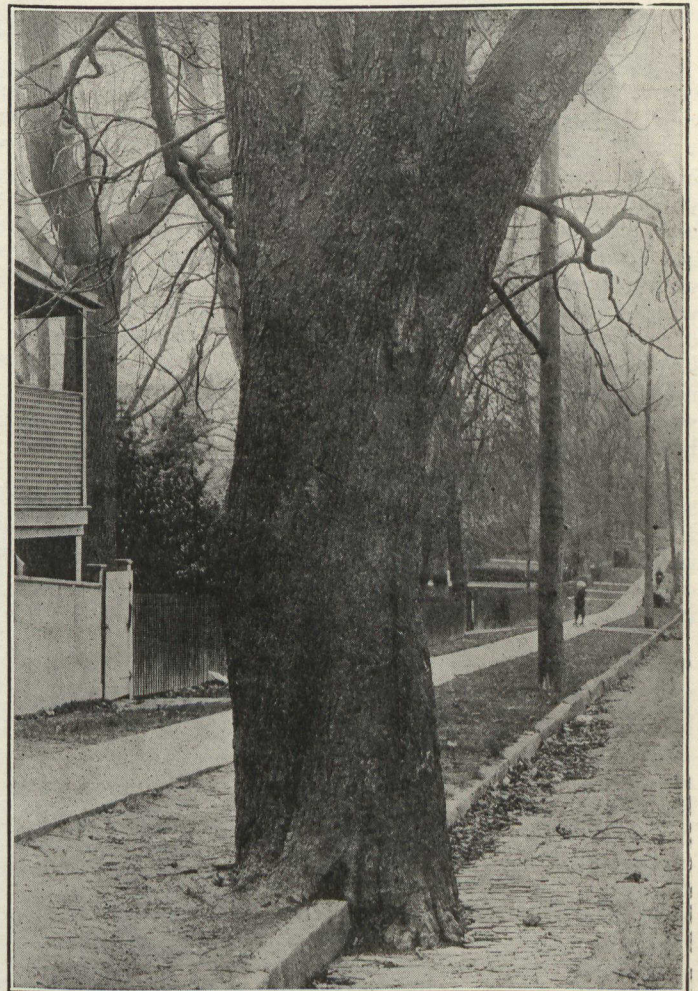
SAVED BY UNIQUE TREATMENT OF CURBING

This beautiful Japonica was left in its original position, the curbing being diverted to meet its requirements.

Here is another method of saving trees when in the line of newly opened streets, raising the grade to conform with old conditions and diverting curb and sidewalk that the root system may be preserved. Incidentally, this happens to be an uncommon though not a rare tree—*Sophora Japonica*, or Japanese Pagoda tree. Furthermore, it is the largest around Philadelphia and possibly in this country. The trunk measures three feet in diameter and the branches spread over an area of seventy feet. It may have been planted by the late Robert Buist, whose nurseries were not far from the home of John Bartram, who found and introduced that rare and beautiful flowering tree, *Gordonia pubescens*, or Franklin tree. The writer discovered this large *Sophora* when the street of which it is now a part was about to be opened, and recommended its preservation. The many stubs shown throughout the tree are evidence of its previous neglect, but since the photograph was taken these have been

removed in a thorough pruning and the tree is likely to live for many years, affording a grateful shade for the occupants of these houses which have sprung up about it. The bloom, too, will delight for it comes in large panicles, white, peashaped, and in midsummer when trees in flower are scarce.

These are but a few instances of the measures taken to protect street trees in Philadelphia since the Fairmount Park Commission assumed their control in 1912. In that year a systematic street census was taken, plotting and recording 127,300 trees, with information which has since been of infinite value in executing the trust of a tree loving city. Trees mean much toward a "City Beautiful" and with their worth recognized no city or town should be without its Shade Tree Commission or Tree Warden.



CURBING OMITTED—THIS IS OFTEN DONE

This old horse chestnut stood directly in the way of the curb, so the curb was omitted, in deference to its age and dignity!