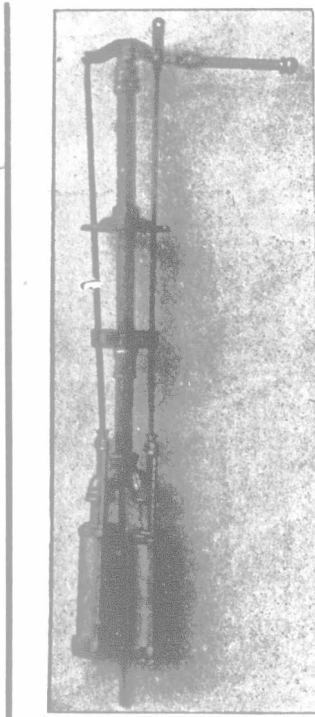


**RICH COAST LANDS.**

A conservative estimate of the crops on Lulu Island and Sea Island, B. C., this year places the value of them at approximately \$400,000.

On Lulu Island this year there is under cultivation ten thousand acres of land. Of this five thousand acres is in oats, one thousand in wheat, three thousand five hundred in hay and five hundred in potatoes. Sea Island has fifteen hundred acres under cultivation this year, five hundred of which is in oats, five hundred in hay and the same number in potatoes. The average yield per acre is the same on both islands. Oats will easily go a ton and a half to the acre, hay three tons and potatoes a ton and a quarter. Besides this there is on Lulu Island twelve hundred and fifty tons of wheat. No wheat is grown on Sea Island. Twenty-five dollars per ton for oats, \$10 for hay, \$18 for potatoes and \$30 for wheat, may safely be taken for the average price that these products will bring on the market.

The figures, while speaking eloquently of the wealth of the land, do not tell the whole story by any means. On the two islands there are thousands of acres of pasturage, and the annual wealth production from this source runs into thousands of dollars. Then again there is somewhat more than a thousand acres devoted to market gardening of which no account has been taken. As no data could be secured in regard to this, no attempt is made to give an estimate of the income from that source. But the figures here given will be interesting and will serve to place before the people some definite idea of just how rich the land of the Fraser River Valley is.



**The Genuine . HAYES FORCE-PUMP**  
Double-Acting

1. Made of steel, brass and malleable cast
2. All galvanized, non-rusting and non-freezing
3. Double Cylinders, making it easy to work
4. Draws water from any depth; forces it any height
5. Windmill and hose can be attached

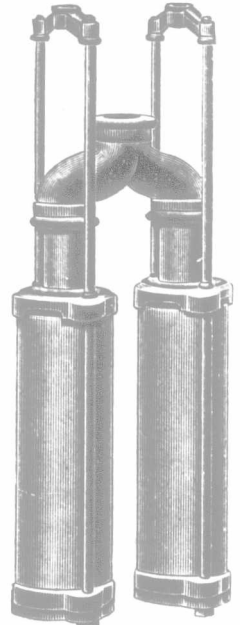
Beware of numerous imitations made of old metal and covered with spelter.

Pump head with cylinders complete, extending 6 ft. into well \$12.00.  
Add 25c. for each additional foot in depth.

Pump for 12 ft. well \$13.50; for 20 ft. well \$15.50, &c.  
Double handle 50c. extra.

See your dealer or write—

**THE MANITOBA HAYES PUMP CO.**  
MORDEN, MAN.



**REGINA'S FAIR TO BE A HUMMER.**

The forthcoming Regina Industrial Fair and Exhibition promises to be the best ever held. Entries for all classes of live stock and agricultural products are coming in fast. The prizes offered in all these classes are in excess of any given in previous years. The accommodation for all live stock is second to none in the country, four large stables having been erected this year, capable of holding two hundred head of stock. The racing events are good and hand-

some purses are offered in all events, the purses and the fine track should bring out a first class lot of horses. Among the several attractions may be mentioned the celebrated Rolle troupe of platform performers who will give exhibitions both afternoon and evening, also the old favorites the Royal North West Mounted Police, who will give various events which always attract large and enthusiastic audiences. A new departure will be the evening attractions to close with a grand dis-

play of fireworks included in which will be the great pyrotechnic triumph, the bombardment of Port Arthur, showing the sinking of great iron clads and the blowing up of immense forts, etc., in fact showing all the modern effects of maritime warfare.

WHEN WRITING TO OUR ADVERTISERS PLEASE MENTION THE FARMER'S ADVOCATE

**THE CANADIAN BANK OF COMMERCE**

CAPITAL - \$10,000,000 REST - \$4,500,000

HEAD OFFICE, TORONTO

B. E. WALKER, General Manager. ALEX. LAIRD, Ass't Gen'l Manager

ONE HUNDRED AND FIFTY-SIX BRANCHES IN CANADA, THE UNITED STATES AND ENGLAND

**BRANCHES IN THE CANADIAN WEST:**

- |  |   |
|--|---|
| BRANDON, Man.<br>A. Maybee, Manager            | MOOSE JAW, Sask.<br>E. M. Saunders, Manager         |
| CALGARY, Alta.<br>C. W. Rowley, Manager        | MOOSOMIN, Sask.<br>D. I. Forbes, Manager            |
| CANORA, Sask.<br>H. J. White, Manager          | NANTON, Alta.<br>N. F. Ferris, Manager              |
| CARMAN, Man.<br>D. McLennan, Manager           | NEEPAWA, Man.<br>C. Ballard, Manager                |
| CLARESHOLM, Alta.<br>A. B. Irvine, Manager     | NORTH BATTLEFORD, Sask.<br>A. S. Houston, Manager   |
| CROSSFIELD, Alta.<br>James Cameron, Manager    | PINCHER CREEK, Alta.<br>W. G. Lynch, Manager        |
| DAUPHIN, Man.<br>D. H. Downie, Manager         | PONOKA, Alta.<br>E. A. Fox, Manager                 |
| EDMONTON, Alta.<br>T. M. Turnbull, Manager     | PORTAGE LA PRAIRIE, Man.<br>A. L. Hquilton, Manager |
| ELGIN, Man.<br>H. B. Haines, Manager           | PRINCE ALBERT, Sask.<br>C. D. Nevill, Manager       |
| ELKHORN, Man.<br>R. H. Brotherhood, Manager    | RADISSON, Sask.<br>C. Dickinson, Manager            |
| GILBERT PLAINS, Man.<br>E. J. Meek, Manager    | RED DEER, Alta.<br>D. M. Sanson, Manager            |
| GLEICHEN, Alta.<br>J. S. Hunt, Manager         | REGINA, Sask.<br>H. F. Mytton, Manager              |
| GRANDVIEW, Man.<br>A. B. Stennett, Manager     | SASKATOON, Sask.<br>W. P. Kirkpatrick, Manager      |
| HIGH RIVER, Alta.<br>P. H. Jory, Manager       | STAVELY, Sask.<br>J. S. Hunt, Manager               |
| HUMBOLDT, Sask.<br>F. C. Wright, Manager       | STRATHCONA, Alta.<br>G. W. Marriott, Manager        |
| INNISFAIL, Alta.<br>H. L. Edmonds, Manager     | SWAN RIVER, Man.<br>F. J. Macoun, Manager           |
| KINISTINO, Sask.<br>E. R. Jarvis, Manager      | TREHERNE, Man.<br>J. S. Munro, Manager              |
| LANGHAM, Sask.<br>W. J. Savage, Manager        | VEGREVILLE, Alta.<br>W. P. Perkins, Manager         |
| LEAVINGS, Alta.<br>H. M. Stewart, Manager      | VERMILION, Alta.<br>A. C. Brown, Manager            |
| LETHBRIDGE.<br>C. G. K. Nour, Manager          | VONDA, Sask.<br>J. C. Kennedy, Manager              |
| LLOYDMINSTER, Sask.<br>S. M. Daly, Manager     | WETASKIWIN, Alta.<br>H. L. Millar, Manager          |
| MACLEOD, Alta.<br>H. M. Stewart, Manager       | WEYBURN, Sask.<br>J. D. Bell, Manager               |
| MEDICINE HAT, Alta.<br>F. L. Crawford, Manager | WINNIPEG, Man.<br>John Aird, Manager                |
| MELFORT, Sask.<br>E. R. Jarvis, Manager        | YELLOWGRASS, Sask.<br>C. Hensley, Manager           |

**BANKING BY MAIL**

Business may be transacted by mail with any of the branches of this Bank in Canada and the United States, accounts being opened, deposits made or funds withdrawn in this way with equal facility. Every possible attention is paid to out-of-town accounts and general business. Notes discounted sales notes collected, etc.

THE NEW  
**NORTH-WESTERN LIMITED**  
ELECTRIC LIGHTED

THE MOST COMFORTABLE  
Convenient, Unique and Beautiful  
Trains ever placed in service between  
Minneapolis, St. Paul and Chicago.

ONE OF THE MANY FEATURES  
is the Longer Berths in Sleepers,  
several inches longer than the usual  
standard.

COMFORT EVERYWHERE

GEO. A. LEE, General Agent,  
215 McDermot. Ave., Phone 1924  
WINNIPEG

**Sharples**  
TUBULAR  
CREAM SEPARATORS

We want you to know Tubular Cream Separators as they are

Investigate the low cost and enclosed gears. Tubulars have neither oil cups, tubes, nor holes, they oil themselves. They have skimming, durability, capacity, easy turning and easy washing—save half the work, greatly increase the amount and quality of butter—are wholly unlike all other separators. Write for circulars.

Toronto, Can. THE SHARPLES SEPARATOR CO., West Chester, Pa. Chicago, Ill.