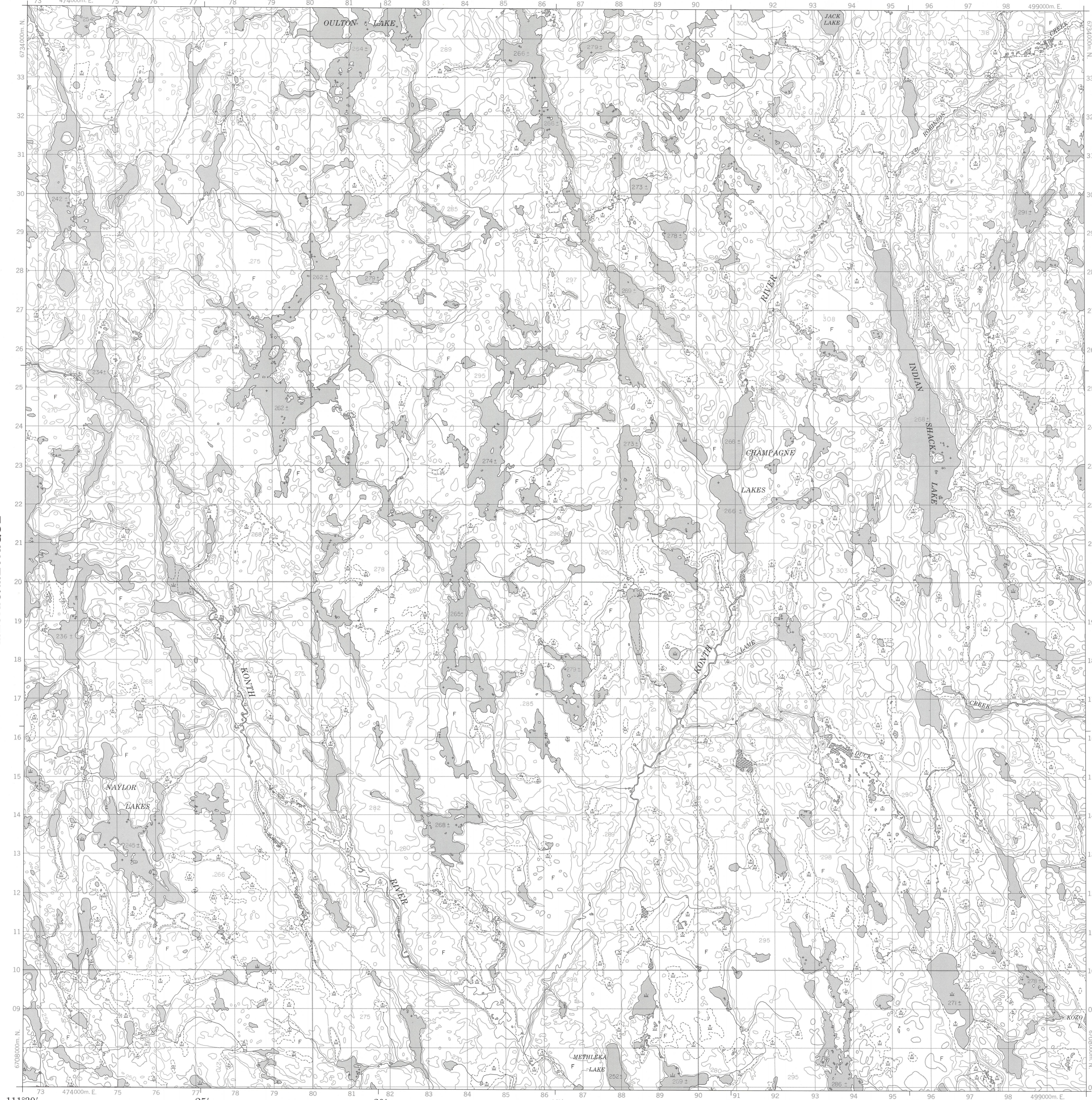


Military users, refer to this map as: SÉRIE A701 SÉRIE MAP 75D/11 CARTE Références de cette carte pour usage militaire: ÉDITION 1 MCE ÉDITION

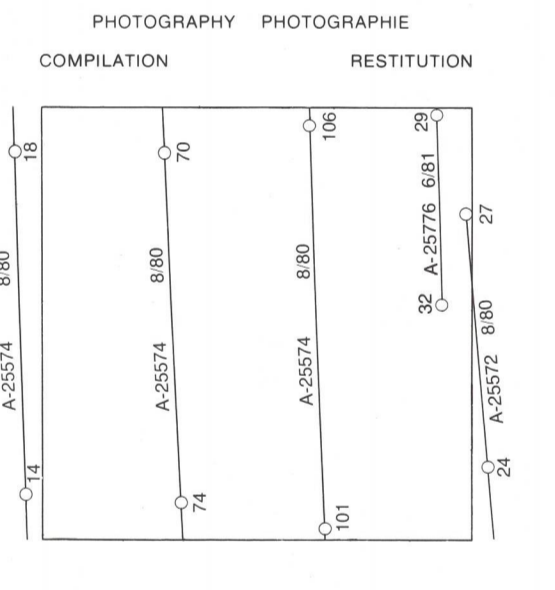
CHAMPAGNE LAKES 75D/11 ÉDITION 1 ÉDITION



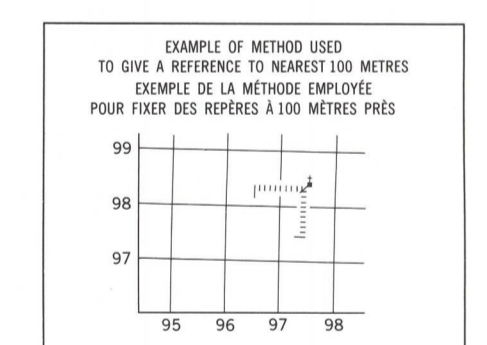
LEGEND - LÉGENDE. Table listing symbols for various features: ROAD, HARD SURFACE; ROAD, LOOSE SURFACE; CART TRACK, WINTER ROAD; TRAIL, CUT LINE, PORTAGE; RAILWAY SIDING, STATION, STOP; BRIDGE; SEALANE BASE, SEALANE ANCHORAGE; HOUSE, BARN; CHURCH, SCHOOL, POST OFFICE; TOWER, LANDMARK OBJECT; WELL; OIL, GAS, TANK, WATER; POWER TRANSMISSION LINE; MINE, GRAVEL PIT; CUTTING, EMBANKMENT; INTERNATIONAL, PROVINCIAL BOUNDARY WITH MONUMENT AND NUMBER; PROVINCIAL BOUNDARY, UNSURVEYED; COUNTY, DISTRICT BOUNDARY; TOWNSHIP, PARISH BOUNDARY; MUNICIPALITY BOUNDARY; RESERVE, SANCTUARY, PARK, ETC. BOUNDARY; OUTLINED LANDMARK AREA BOUNDARY APPROXIMATE, ETC.; D.L.S. TOWNSHIP CORNER, SURVEYED, UNSURVEYED; D.L.S. SECTION CORNERS; HORIZONTAL CONTROL POINT; BENCH MARK WITH ELEVATION; SPOT ELEVATION, PRECISE; STREAM OR SHORELINE, INDEFINITE; LAKE, INTERMITTENT LAKE, SHALLOW LAKE; FLOODED LAND; MARSH, SWAMP (WOODED); STRING BOG; DRY RIVER BED WITH CHANNELS; RAPIDS, FALLS, RAPIDS; FORESHORE FLATS, SAND IN WATER, ROCKS; TUNDRA, LAKES IN TUNDRA; POLYTONS; PALSA BOG; DAM, WHARF; ICEFIELD (GLACIER); MORaine; PINNO; DITCH; CONTOURS; APPROXIMATE CONTOURS; DEPRESSION CONTOUR; CLIFF; SPOT ELEVATION, APPROXIMATE; LAND, WATER; ESKER; SAND, SAND DUNES, RAISED BEACHES; HISTORIC SITE; WOODED AREA, FOREST, CLEARED AREA.

METRIC/MÉTRIQUE

METRIC/MÉTRIQUE



GRID ZONE DESIGNATION DÉSIGNATION DE LA ZONE DU QUADRILLAGE: 12V. 100 000 m SQUARE IDENTIFICATION IDENTIFICATION DU CARRÉ DE 100 000 m: VC.



EXAMPLE OF METHOD USED TO GIVE A REFERENCE TO NEAREST 100 METRES. REFERENCE POINT POINT DE REPÈRE: CHURCH - ÉGLISE. EASTING: Read number on grid line immediately to left of point. ABSISSSE: Note le chiffre de la ligne du quadrillage immédiatement à gauche du repère. ESTIMATE TENTHS OF A SQUARE FROM THIS LINE AND POINT. ESTIMER le nombre de dixièmes du carré entre cette ligne et le repère en direction est. NORTHING: Read number on grid line immediately below point. ORDONNÉE: Note le chiffre de la ligne du quadrillage immédiatement en dessous du repère. ESTIMATE TENTHS OF A SQUARE FROM THIS LINE AND POINT. ESTIMER le nombre de dixièmes du carré entre cette ligne et le repère en direction nord. GRID REFERENCE: 97984. REFERENCE AU QUADRILLAGE: 97984. Nearest entire grid reference 100 000 metres. La prochaine référence similaire est à 100 000 mètres.

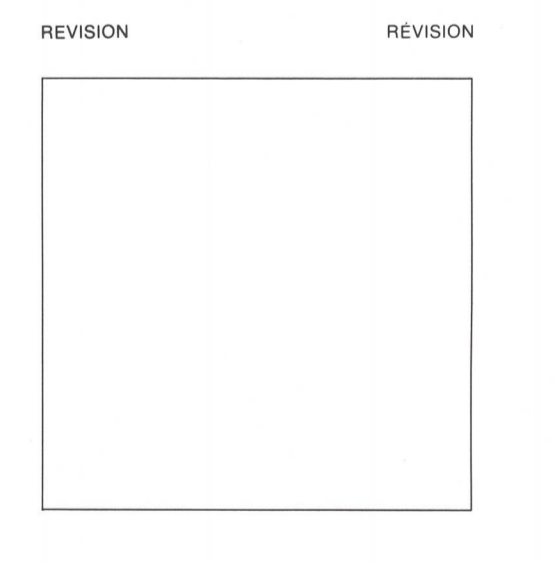


Table showing grid coordinates: 75 D/13, 75 D/14, 75 D/15, 75 D/12, 75 D/11, 75 D/10, 75 D/5, 75 D/6, 75 D/7.

ONE THOUSAND METRE UNIVERSAL TRANSVERSE MERCATOR GRID ZONE 12. QUADRILLAGE DE MILLE MÈTRES TRANSVERSE UNIVERSEL DE MERCATOR. The 1984 MAGNETIC BEARING is 24°45' (440 mils) EAST of GRID NORTH. ANNUAL CHANGE DECREASING 28.5'. GRID NORTH is 0°13' (4 mils) WEST of TRUE NORTH for centre of map. Le REPÈRE MAGNÉTIQUE en 1984 est à 24°45' (440 mils) à l'EST du NORD DU QUADRILLAGE. VARIATION ANNUELLE LE DÉCROISSANTE 28.5'. Le NORD DU QUADRILLAGE est à 0°13' (4 mils) à l'OUEST du NORD GÉOGRAPHIQUE au centre de la carte.

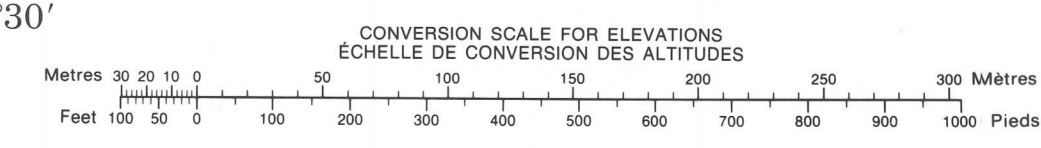
PRODUCED BY THE SURVEYS AND MAPPING BRANCH, DEPARTMENT OF ENERGY, MINES AND RESOURCES, OTTAWA, PUBLISHED IN 1986. COPIES MAY BE OBTAINED FROM THE CANADA MAP OFFICE, DEPARTMENT OF ENERGY, MINES AND RESOURCES, OTTAWA, OR YOUR NEAREST MAP DEALER. © 1986, HER MAJESTY THE QUEEN IN RIGHT OF CANADA, DEPARTMENT OF ENERGY, MINES AND RESOURCES.

ELEVATIONS IN METRES ABOVE MEAN SEA LEVEL. CONTOUR INTERVAL 10 METRES. NORTH AMERICAN DATUM 1927. TRANSVERSE MERCATOR PROJECTION. INFORMATION CONCERNING BENCH MARKS AND HORIZONTAL SURVEY MONUMENTS CAN BE OBTAINED FROM GEODETIC SURVEY, SURVEYS AND MAPPING BRANCH, OTTAWA.

CHAMPAGNE LAKES. DISTRICT OF MACKENZIE. NORTHWEST TERRITORIES. Scale 1:50 000 Échelle. METRES 1000 0 1000 2000 3000 4000 Mètres. Miles 1 0 1 2 3 Miles.

ALTITUDES EN MÈTRES. ÉQUIDISTANCE DES COURBES... 10 MÈTRES. PROJECTION TRANSVERSE DE MERCATOR. POUR TOUT RENSEIGNEMENT CONCERNANT LES REPÈRES ET BORNES ALTIMÉTRIQUES, S'ADRESSER AUX LEVÉS GÉODÉSQUES, DIRECTION DES LEVÉS ET DE LA CARTOGRAPHIE, OTTAWA.

ÉTABLI PAR LA DIRECTION DES LEVÉS ET DE LA CARTOGRAPHIE, MINISTÈRE DE L'ÉNERGIE, DES MINES ET DES RESSOURCES, OTTAWA, PUBLIÉE EN 1986. CES CARTES SONT EN VENTE AU BUREAU DES CARTES DU CANADA, MINISTÈRE DE L'ÉNERGIE, DES MINES ET DES RESSOURCES, OTTAWA, OU CHEZ LE Vendeur LE PLUS PRÈS. © 1986, SA MAJESTÉ LA REINE DU CHEF DU CANADA, MINISTÈRE DE L'ÉNERGIE, DES MINES ET DES RESSOURCES.



CHAMPAGNE LAKES 75D/11 ÉDITION 1 ÉDITION. Energy, Mines and Resources Canada. Énergie, Mines et Ressources Canada.

