

SATURDAY EVENING POST
For May 22nd---10c
—Book Dept., Main Floor, James and
Albert Sts., Main Store.

EATON'S DAILY STORE NEWS

"I Passed by Your Window"—with
music by May H. Brahm—song that has
had a big run in England, and is sure
to be popular here. Price, 40c per copy.
—Sheet Music Dept., Fifth Floor,
Queen St., Main Store.

Today---Victoria Day---Store Remains Closed All Day

The Day of the Panama and Straw

LIKE THE DAY OF THE
TWO-PIECE SUIT

Is Near At Hand



AT \$3.00

Is an English boater of sennit straw, with 3 3/8-inch crown, 2 1/4-inch brim and cushioned leather sweatband. Price, \$3.00.

—Main Floor, James St., Main Store.



AT \$7.50

Is a bleached Panama hat with medium fedora crown and a flat brim that's wired to prevent drooping. Sizes 6 5/8 to 7 1/2. Price, \$7.50.



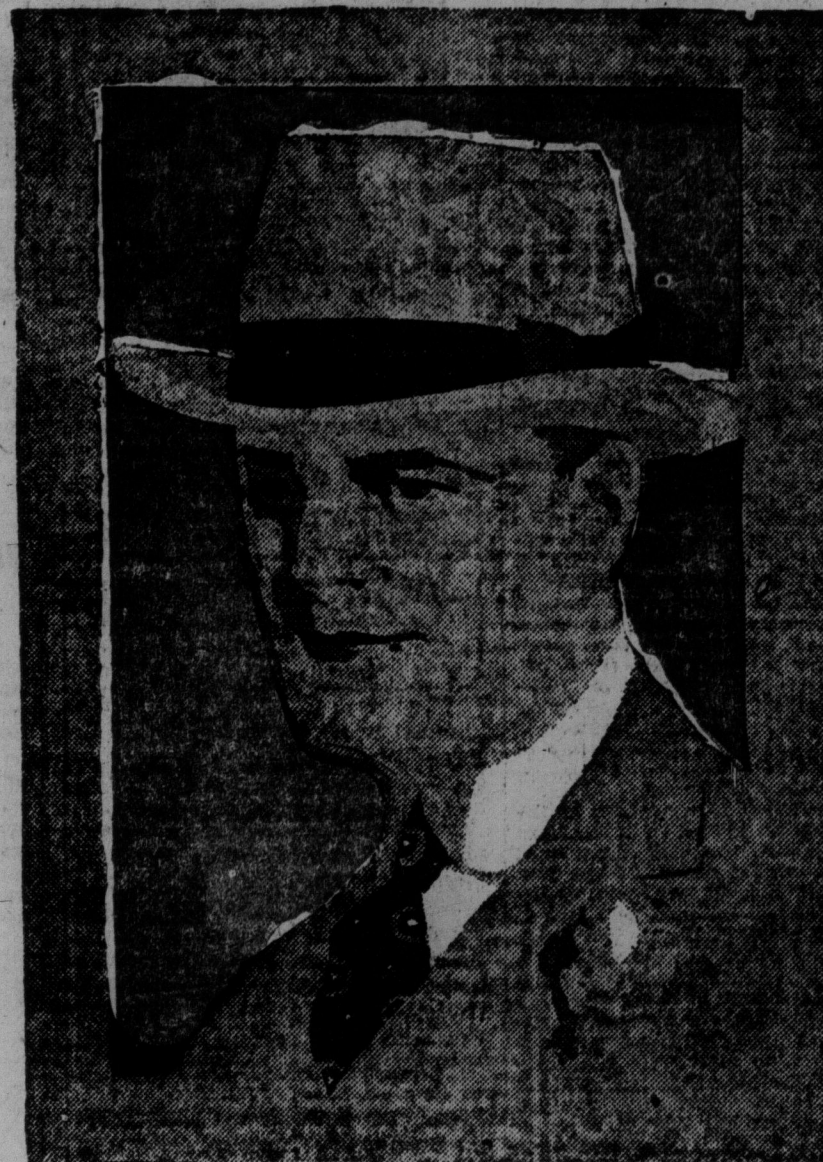
AT \$8.00

Is a sailor hat of a fine, evenly-woven bleached Panama. A distinctive hat that's light and cool. Sizes 6 5/8 to 7 1/2. Price, \$8.00.



AT \$2.50

Is an English hat of sennit straw, with crown and brim of medium proportions. Sizes 6 5/8 to 7 1/2. A comfortable light hat at \$2.50.



AT \$15.00

Is a finely-woven Panama hat that should appeal to elderly men as well as the younger fellows. A distinctive fedora shape, with flared brim. Size 6 5/8 to 7 1/2. Price, \$15.00.

AS FOR TWO-PIECE SUITS---THERE'S A MODEL FOR MOST EVERY TYPE
REGULAR MODELS, STOUT MODELS---MODELS FOR MEN LESS THAN AVERAGE
STATURE, AND REGULAR YOUNG MEN'S MODELS

THE LIGHT COOL MATERIALS OF WHICH THESE SUITS
ARE MADE, CONSIST FOR THE MOST PART, OF
"PALM BEACH" FABRIC AND TWEED-LIKE MATERIALS.



At \$25.00
Is the
"Deal"
Model

A man's semi-fitted, 3-button, single-breasted, 2-piece suit of blue or steel grey, union wool and cotton Palm Beach cloth, with snug-fitting collar, notched soft roll lapels and 3 outside patch pockets.

Trousers are in outing style and have belt loops, 2 hip and 2 side pockets, one watch pocket and cuff bottoms. Size 35 to 44. Price, \$25.00.

At \$28.50

Are men's or young men's 3-button semi-fitted, 2-piece models of light wool or linen material in homespun effect, in plain oxford grey or taupe, and olive green mixture.

Have snug-fitting collars, notched lapels, 3 outside patch pockets and yoke and sleeve linings of mercerized cotton.

Trousers are in outing style and have tunnel and belt loops, 5 strong pockets and cuff bottoms. Sizes 35 to 44. Price, \$28.50.

For Men of Medium Stature

Is the "Elberon," a 2-button single-breasted model with 3 outside patch pockets, snug-fitting collar and notched soft roll lapels. The material consists of Palm Beach union wool and cotton fabric, in brown and blue pin-checked pattern.

Trousers are in outing style and have 2 hip and 2 side pockets, one watch pocket, belt loops and cuff bottoms. Sizes 35 to 40. Price, \$26.00.

For the Man Who is Stout
But of Regular Stature

Is a 3-button single-breasted model of firmly-woven Oxford grey, union wool and cotton Palm Beach cloth; lapels are notched and pockets are of the patch type.

Trousers are in proper proportion for men with waistband measuring about the same as the chest. Have belt loops, 5 pockets and cuff bottoms. Sizes 38 to 46. Price, \$27.50.

A Young Man's 2-Button
Double-Breasted Model

Is of union wool and cotton tweed, in green and brown heather mixture. Has snug-fitting collar, high peaked lapels and patch pockets.

Trousers are of the outing type, and have belt loops, 5 pockets and cuff bottoms. Sizes 35 to 38. Price, \$29.00.

This
Two-Piece
Suit
is Priced at
\$30.00

IT IS of Cambridge grey all-wool tweed, in 3-button, single-breasted style, with new wide collar, and notched soft roll lapels, and outside patch pockets without flaps. Yoke and front lining of coat is of lustre; sleeves are lined with mercerized, striped cotton.

Trousers are in outing style, and have side straps, belt loops, and plain or cuff bottoms. Sizes 35 to 44. Price, \$30.00.

At \$32.00

Is a 3-button, single-breasted 2-piece suit in semi-fitted style, for men or young men. It is of mixed oxford grey, union wool and cotton tweed, with blue silk hairline stripe. Collar is snug-fitting and of the new wide style; lapels are notched, pockets are of the patch type.

Trousers are nicely proportioned, outing style, and have two pockets, tunnel and belt loops, and cuff bottoms. Sizes 35 to 44. Price, \$32.00.



—Second Floor, James St., Main Store.

THE T. EATON CO LIMITED