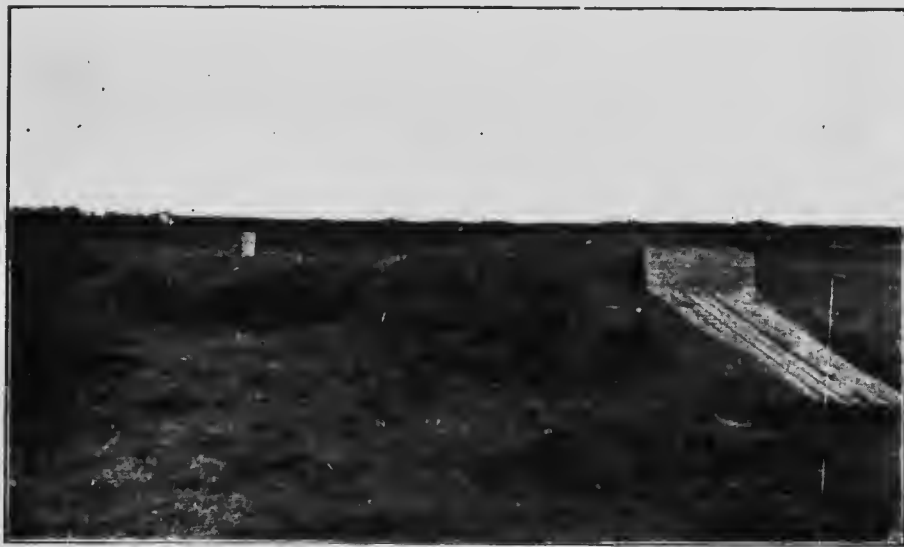


PLAN OF ROOT CELLAR FOR WESTERN CANADA

BY

WM. A. MUNRO, B.A., B.S.A.



Completed root cellar at Rosthern covered for the winter.

DOMINION EXPERIMENTAL FARMS.

J. H. GRISDALE, B.Agr.,
Director.

WM. A. MUNRO, B.A., B.S.A.,
Superintendent Experimental Station,
Rosthern, Sask.

EXHIBITION CIRCULAR No. 71.

(January, 1916.)

93390