

ARE THE CHILDREN HOME?

Each day, when the glow of sunset
Fades in the western sky,
And the wee ones, tired of playing,

Alone in the dear old homestead,
That once was full of life,
Ringing with girlish laughter,

"Yes, love," I answer him gently,
"They're all home long ago,"
And I sing in my quivering tremble,

Home, where never a sorrow
Shall dim their eyes with tears,
Where the smile of God is on them,

Sometimes, in the dusk of evening,
I only shut my eyes,
And the children are all about me,

A breath and the vision is lifted,
Away on the wings of light,
And again we two are together,

And still as the summer sunset
Fades away in the west,
And the wee ones, tired of playing,

CETEWAYO, KING OF THE ZULUS.

The third figure of the group now in conflict,
or flight, or in captivity, on the south-eastern
shores of Africa, and who absorbs a strange

It may, therefore, be as well to gather such
stray facts as we can find of a people at once in-
teresting and heroic. It is not the first occasion

we have not seen mentioned elsewhere. The
Colonial Office was bent on the confederation
of the Colonies of South Africa. The Metro-

What may be the future of the great Contin-
ent of Africa is difficult of conjecture. But it is
tolerably certain that the influence of England,

Ottawa. F. T.

AWARD FOR SANITARY INVENTION.

Mr. Thomas Griffiths, F.C.S., of the Silicate
Paint Co., London and Liverpool, has carried
off the Gold Richardson Medal of the Sanitary

The Duke of Northumberland, President of
the Institute, in presenting the medal to Mr.
Griffiths at the meeting held at the London

OUR CHESS COLUMN.

Solutions to Problems sent in by Correspondents
will be duly acknowledged.

TO CORRESPONDENTS.

J. W. S., Montreal.—Papers to hand. Thanks.
J. B., Montreal.—Letter received. Thanks.
W. S., Montreal.—The information you seek will be
found in our Column to-day.

A circular, which we may look upon as a prospectus
of the annual meeting of the Canadian Chess Association,
has come to hand, and we find that it contains im-

We have been informed, however, that another notice
is to be issued, and should such be the case, we shall
avail ourselves of any additional particulars which it
may contain.

The present circular states that the Eighth Annual
Meeting of the Association will be held at 4 p. m. on
Tuesday, September 23rd, 1879, and following days, in
Committee Room, No. 2, House of Commons, Ottawa.

The Annual Chess Tourney is to begin shortly after
the opening of the meeting. It is open to all residents
of the Dominion on payment of an entrance fee of one dol-

Special arrangements are to be made by the local
committee for the accommodation, at a reduced rate, of
members of the Association visiting Ottawa for the pur-

the Provinces of Ontario and Quebec, the names of more
than a dozen composers of chess problems, whose pro-
ductions exhibit all the important characteristics which
should be found in compositions of this nature.

It is to be hoped that at all future meetings of the As-
sociation nothing will occur to prevent such arrange-
ments being made as will secure for competition some of
the best specimens which the Dominion can produce of
this, the most artistic of chess studies.

Mrs. J. W. Gilbert, of Hartford, the best lady chess-
player of New England, and Miss Ella M. Blake, of New-
bury, S.C., the best lady chessplayer of the South, are
soon to play a correspondence game, the former having
accepted the latter's challenge.

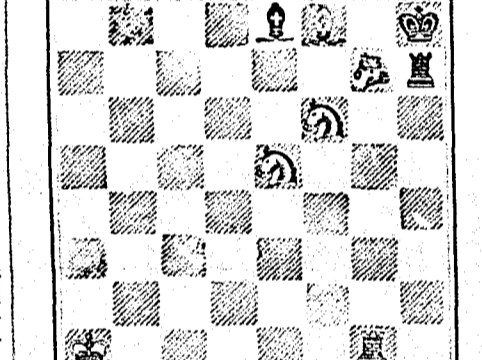
We clip the following from the Holyoke Transcript:
" Our Canadian brethren are greatly exercised over a
move, sent by telegraph, in a game played between the
Toronto and Seaford Chess Clubs. The message was
18 Q R Q 7. As the book stood on that square Q 7, no
move was actually made, and we think such a mistake,

The Glasgow Herald informs us that M. Rosenthal, of
Paris, has challenged Dr. Zukertort to play a match at
chess for 5,000 francs a-side. M. Rosenthal offers to pay
the Doctor's expenses if he play the match in Paris.

PROBLEM NO. 238.

By the late Professor Andersen. (From Miles' Chess
Gems.)

BLACK.
K at Q R 6
R at K R 5
B at K K 4
Kt at Q 4
Kt at Q K 5



White to play and mate in three moves.

GAME 381ST.

CANADIAN CHESS CORRESPONDENCE TOURNEY.

Game played between Mr. J. W. Shaw, of Montreal,
and Mr. C. A. Boivin, of St. Hyacinthe, Q.
(King's Gambit declined.)

WHITE.—(Mr. Shaw.) BLACK.—(Mr. Boivin.)

- 1. P to K 4
2. P to K B 4
3. Kt to K B 3
4. B to B 4 (a)
5. P takes P
6. P to Q 3
7. Q to K 2
8. B to K Kt 5
9. P to B 3
10. R to B sq
11. B takes Kt
12. Q Kt to Q 2
13. Castles
14. P to K R 3
15. Kt to Kt 3 (b)
16. B takes B
17. P to Q 4
18. Q to B 4
19. Kt (Kt 3) takes P
20. R takes B
21. R (B sq) to Q sq
22. Kt takes Kt
23. R (Q 4) to Q 2
24. Q to Q 4
25. R to K sq
26. Q to K 3
27. R takes Q
28. K takes R
29. R to K 2
30. K takes R
31. K to K 3 (d)
32. K to Q 3
33. K to B 5
34. K to B 5
35. P to Q R 4
36. P to R 5
37. K to Kt 4
38. P to B 4
39. P to K Kt 3
40. P takes P
41. P to B 5

and the game was abandoned as a Draw.

NOTES.

- (a) P to Q B 3 is recommended at this point, when the
Gambit is declined.
(b) Kt to K R 4, after White had castled on the Q's
side, deserved consideration.
(c) And the positions are remarkably similar and equal.
(d) P to K 5, or P to K Kt 4 appears necessary on the
part of White instead of this move.

GAME 382ND.

INTERNATIONAL TOURNEY.

Game played between Mr. W. Olcott, Conn., U.S., and
Mr. H. Williams, Wrexham, Wales.

WHITE.—(Mr. Olcott.) BLACK.—(Mr. Williams.)

- 1. P to K 4
2. Kt to K B 3
3. B to Q Kt 5
4. Castles
5. P to Q 4
6. P to Q 5
7. B to K 2
8. P takes Kt
9. P takes Q P (ch)
10. B takes P
11. B to K B 4
12. Q Kt to B 3
13. Kt to Q 5
14. Kt takes B (ch)
15. B takes Kt
16. R to K
17. Q takes R
18. Q to Q Kt 4
19. Q to Q 4
20. R to Q B sq
21. Q takes R P
22. Q to Kt 6
23. B to B 6
24. B takes R
25. Q to B 5
26. Q to Q 4
27. R to K
28. R to K 8 (ch)
29. Q takes Q
30. R to Q 8
31. K to B
32. K to K

Black resigns.
—Hartford Times.

SOLUTIONS.

Solution of Problem No. 236.

- WHITE. BLACK.
1. P to B 4 1. Q takes Kt P
2. Q to B 3 (ch) 2. K takes Q
3. B mates Black has other defences.

Solution of Problem for Young Players No. 234.

- WHITE. BLACK.
1. B to Q B sq 1. P to Q 5
2. P to Q B 4 2. Any move.
3. Mates acc.

PROBLEM FOR YOUNG PLAYERS No. 235.

- WHITE. BLACK.
K at Q R 6 K at Q Kt sq
R at K R 5 Q at K sq
B at K Kt 4 B at Q B 6
Kt at Q 4 P at Q R 2
Kt at Q Kt 5

White to play and mate in three moves.

NOTICE.

The Annual General Meeting of the shareholders of the

British American Bank Note Company,

for the election of Directors and other business, will be
held at the office of the Company, St. John street,
Montreal, on

Tuesday, 2nd September, 1879,

at FOUR o'clock, P.M.

(By order.)
GEO. JNO. BOWLES,
Secretary.

Montreal, 19th August, 1879.

LANGUAGE AND FINE ARTS.

Lessons of the French language, Drawing and Paint-
ing (in oil or water colors), with theoretical and practical
perspective, by a first-class Professor. Address "B,"
office of the Canadian Illustrated News.

Compton Ladies' College, Compton, P.Q.

An Incorporated School for the Higher Education of
Young Ladies.

EMBRACING ALSO
A Junior and a Preparatory Department.

ESTABLISHED 1874.

President and Visitor—The Lord BISHOP OF QUEBEC.

Principal—The REV. J. DINZEY, S.A.C.

Lady Principal—MRS. MINES, M.C.L., London, (Eng.)

Lady Superintendent of the Household—MRS. DINZEY.

This well known School for the daughters of gentle-

men, so noted for the Healthiness and Beauty of its si-
tuation, WILL RE-OPEN SEPTEMBER 10TH, with an
able and efficient staff of teachers.

The facilities offered in this Institution for a thorough
and finished education are second to none in the Domi-
nion, while an effort is spared to make the School a RE-
FINED, CHRISTIAN and HAPPY HOME for the
PUPILS.

The Musical Department is under the able manage-
ment of Miss Holland.

French, by a French teacher, is taught daily in the
School.

Young Pupils will be the exclusive charge of a kind
and experienced Governess specially engaged for that
purpose, and will also be tenderly cared for by the Lady
Principal and Mrs. Dinzey.

TERMS:

Board, Laundry, and Tuition fees, in-
cluding the whole course of Eng-
lish, Latin, French and other Mod-
ern Languages taught in the
School, Drawing, Painting, Calli-
graphy, Needlework, Musical At-
tendance and Medicines, \$125 per annum.

Music, with use of Piano, \$36

A reduction of \$20 per annum for each pupil is made
in the case of sisters and the daughters of clergymen.

For "Circulars" with full particulars, including refer-
ences, address the Principal.

REV. J. DINZEY,
Ladies' College, Compton, P.Q.

50 Perfume, Snowflakes, Chromo, Motto Cards, names
in gold & jet, 10c. G. A. SPINK, B. Wallingford, Ct.