

PRINCIPALLY ABOUT EVENING DRESSES AND CORSETS

See Our Big Showing of Corsets, Also Window Display, Government Street Windows



STYLISH WOMEN WEAR Royal Worcester Corsets

At the price there are none better—few so good. They are the product of nearly fifty years of applied genius in the art of corset-making.

Unending study of the ever-changing modes enable their designers to produce all the up-to-the-minute style effects.

THIS STYLISH MODEL

is for the slender figure. It has medium high bust, long flat front, and medium hip and back. Made from white batiste.



The "D.S." Corset

These corsets are special lines. They are made expressly for us by the D. & A. Corset company. We have models to suit all figures and the most attractive feature of all is the price, every quality is priced much below what you usually are asked to pay for qualities as good.

"D.S." CORSETS, three models at \$1.00

"D.S." CORSETS, five models at \$1.50

"D.S." CORSETS, four models at \$2.00

The advent of the Directoire and Empire Gowns has called for special styles in corsets. These styles, on account of the extremely long lines, test the ingenuity and experience of the corset-makers to the utmost. To design and make these styles so that they will mould the figure to the proper lines, and yet stand the strain and the wear, has thoroughly tested the skill of the makers, and they have succeeded in producing corsets that are correct in shape, light in weight, comfortable to wear and durable. Next to correct style is to have them properly fitted. We have an expert fitter to see that every corset is properly fitted before it leaves the department.

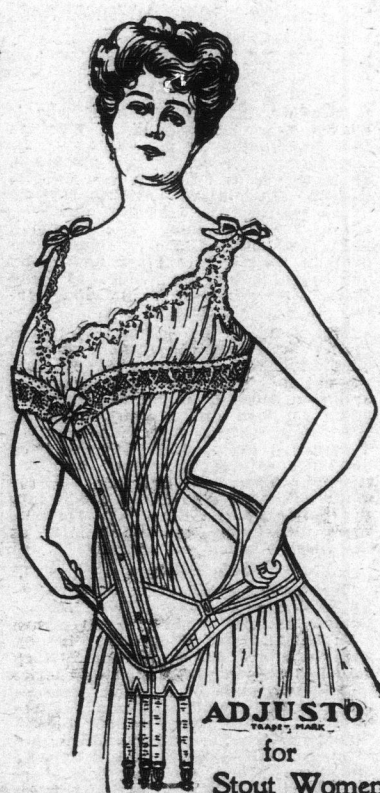
Royal Worcester Adjusto Corsets for Stout Women

As the Adjusto bands are tightened, the prominent abdomen disappears and superfluous flesh of hips and lower back is restrained and moulded into graceful lines.

The Adjusto supports and firmly holds the bust and snugly fits the upper back, preventing unsightly bulging of flesh.

The Adjusto permanently retains its original shape, because it is correctly designed, made from durable materials and reinforced with superior quality stays.

The Adjusto is the only corset on the market that can be adjusted after once on the figure.



Other Necessities to Be Found in the Corset Dept.

WOMEN'S BRASSIERES, from 75c to \$1.25

WOMEN'S BUST FORMS, from 25c to 85c

WOMEN'S SANITARY BELTS, from 25c to 50c

WOMEN'S SANITARY TOWELS, from 50c to \$1.50

WOMEN'S SANITARY TOWELS, each 20c

BLOUSE DISTENDERS, \$1.00 and \$1.50

WOMEN'S AND CHILDREN'S SHOULDER BRACES . . . 50c

WOMEN'S AND CHILDREN'S WAISTS, 25c to \$1.50

SCOTT PADS, each 50c and . . 65c

CLASP PROTECTORS, each 20c

CORSET LACE, three yards, five yards and seven yards long at 5c, 10c and 15c

WOMEN'S MATERNITY WAISTS, nice lines at \$1.50 and \$2.25

The D. & A. Corsets

These are the best Corsets made in Canada, and we have them in all styles to fit every figure, priced from \$1.00 to \$5.00. This style as illustrated, sells at . . \$2.25



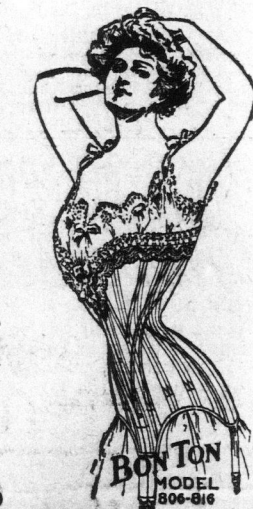
Ideal for Summer Wear Bon Ton Batiste Corsets

Their inimitable style and grace, which have invariably marked them as perfect in design, material and finish, are notably expressed in the superb new models.

Bon Ton Batiste Corsets are made of fine, soft, pliable Batiste fabric—very appropriate for wear with the daintiest of warm weather garments—and are unquestionably superior because they are light, cool, serviceable, comfortable and will not rust.

The distinctive features of the new Bon Ton models are the long, flat front and hips, long, shapely back, and varying heights of bust, suited to every type of figure.

These Corsets are boned throughout with the best quality Eagle bone. Prices from \$5.00 to \$8.00



Special Items of Whitewear

NIGHTDRESS, slipover style, made of fine, soft cambric, low neck, finished with Swiss embroidered yoke, edged with fillet lace, with ribbon inserted. Price \$1.15

NIGHTDRESSES, slipovers, made of long cloth, square neck with yoke of fillet insertion, neck and sleeves edged with fillet lace with ribbon inserted. Price \$1.25

NIGHTDRESSES, made of long cloth, square neck, with yoke of tucks and insertion, neck, front and sleeves trimmed with embroidery \$1.50

UNDERSKIRTS, made of fine cambric, with 14 inch muslin flounce, with row of heavy torchon insertion, three inches wide, and edged with four inch torchon lace \$1.75

UNDERSKIRTS, made of cambric, with 15 inch flounce of muslin, has rows of fine tucks and two rows of heavy insertion, edged with Swiss embroidery. Price \$1.25

UNDERSKIRTS, made of fine cambric, with 13 inch flounce of muslin, with fine tucks, edged with seven inch embroidery \$2.00

CORSET COVERS, made of fine cambric, has yoke of Swiss allover edged with fillet insertion, trimmed with torchon lace with silk ribbon insertion 75c

CORSET COVERS, made of fine muslin, fine tucks and four rows of embroidery down front, trimmed with fillet lace inserted with silk ribbon \$1.00

Footwear for Women Moderately Priced

WOMEN'S BOOTS—The Piccadilly. Smart, dressy, patent colt, Blucher cut boot, medium weight, "Queen Quality" \$4.00

WOMEN'S OXFORDS—The Piccadilly. An A1 quality patent colt, Blucher Oxford, Goodyear welt soles, Queen Quality \$4.00

Shop With Us By Mail

If you live out of the city, we would like to serve you by mail. Thousands of satisfied patrons can testify to the thoroughness of the service we give in this department. A large trained staff, under expert supervision, give the orders the most careful attention, and every order is filled promptly. We issue a large Catalogue containing much valuable information, that we would be pleased to send to you on request. We solicit a trial of this department.

Dainty Lunches and Afternoon
Tea at Our Tea Rooms

Gowns for Afternoon and Evening Wear



WOMEN'S PRINCESS GOWN, made of fancy net, in ecru and white. Yoke and sleeve tucked and each tuck finished with lace. Skirt made with clusters of tucks and lined throughout with silk. Price \$25.00

WOMEN'S HANDSOME EVENING GOWN, in pale pink net, Princess style, low neck and very short sleeve. V effect of shirred chiffon back and front. Girdle of satin with silk braid trimmings. Skirt with train, bottom of skirt, sleeve and over shoulder to waist very elaborately trimmed with sequin net in fancy scroll. Entire gown silk lined. Price is \$100.00

WOMEN'S PALE GREEN EVENING GOWN, Princess style, made of satin. Girdle of wide gold braid with long ends, low neck and short puff sleeve, pointed effect to girdle, back and front of shirred white net with gold braid trimmings. Skirt with train and tucked at hips. Bodice silk lined. Price \$50.00



WOMEN'S HANDSOME PRINCESS GOWN, made of extra good quality of satin, in the new shade of green. Yoke and collar of tucked net with a finish of wide gold embroidery. Full length shirred sleeve. Skirt made with side panel and button trimmed. Price \$45.00

WOMEN'S EVENING GOWN, in pale blue satin, Princess style. Low neck, full length sleeve of shirred chiffon, with satin trimming. Pleated girdle with long ends reaching to bottom of skirt. Body of gown from girdle to neck of embroidered net, with satin folds over shoulders. Price \$50.00

WOMEN'S ELABORATE EVENING COSTUME, made of very fine quality black silk chiffon, Princess style, with high girdle, low neck and short sleeve. V effect back and front of black sequin, with very rich Carrickmacross lace over shoulder to girdle. Skirt with train finished with four large tucks and wide lace to match bodice. Entire gown silk lined. Price \$85.00



The social whirl now resumes its sway, after the interruption of the Lenten season. If you contemplate getting any new afternoon or evening gowns, we have a magnificent assortment, and whether you want any or not, we would like very much to show you what we have. You are under no obligation to buy.

WOMEN'S PONGEE PRINCESS GOWNS, with yoke and collar of plain net trimmed with narrow gold braid, finished at waist with tucked belt and wide girdle. Skirt with side panel and button trimmed. Price \$25.00

WOMEN'S TWO-PIECE DRESS, made of very fine spotted net, in white and ecru, suitable for evening or afternoon wear. Blouse, with yoke and collar of fancy insertion, with a finish of narrow lace, full length sleeve. Skirt made with rows of insertion and tucks, lined throughout with silk. Price \$22.50

Seasonable Underwear for Men

NEW SPRING AND SUMMER UNDERWEAR—Special quality men's Balbriggan, strong, 2-thread, natural shade, and also with a pale blue stripe. Per garment 50c

MEN'S MEDIUM WEIGHT ELASTIC RIBBED BALBRIGGAN SHIRTS AND DRAWERS—Natural shade, special quality. Per garment 50c

MEN'S FINE Lisle ELASTIC RIBBED SHIRTS AND DRAWERS—Shades, blue and white. Special, per garment \$1.00

MEN'S FINEST QUALITY MERCERISED Lisle THREAD, ELASTIC KNOT COMBINATION SUITS—Pink, blue and white shades. Per suit \$3.75

MEDIUM WEIGHT UNDERWEAR—Natural shade Merino shirts and drawers, men's sizes. Just suitable for this season of the year. Special, per garment 50c

MEN'S UNDERWEAR—Special knit, elastic ribbed, natural wool shirts and drawers, middle weight, for spring, all sizes for men. Per garment \$1.25

Children's Washing Dresses

GIRLS' DRESSES, made sailor style of checked gingham, white ground with light blue, dark blue and black checks. Square sailor collars and fronts trimmed with white. Sizes 4, 6 and 8 years. Price \$2.25

GIRLS' DRESSES, made of fine zephyr, in self colors, sky, blue and pink. The waists are box-pleated with pointed yoke of Swiss insertion, three-quarter sleeves, with wristband of insertion, nice full pleated skirt, finished with deep hem. Sizes 8, 10, 12, 14 and 16 years. \$2.75

Now Comes House Cleaning

After Easter comes house-cleaning. This seems to be the time selected to put the house in order. We would like to do your carpet cleaning not only as a matter of business, but because we know that our Vacuum Cleaner will satisfy and please you. It is the only system that does the cleaning thoroughly without removing the carpets and upsetting the house. It costs no more than other systems and does far better work without any inconvenience to your home. We would be glad to estimate on any work you have to do.

Dainty Lunches and Afternoon
Tea at Our Tea Rooms

DAVID SPENCER, LTD.

VOL. L. NO. 240

SULTAN W CAUSE O REVOLT

There is Good Reason to
believe That the Sultan
self Organized the
Mutiny Against Governor

YILDIZ KIOSK IN
TOUCH WITH MIL

Abdul Hamid Caused the
prisonment of a Man
Spoke Against the L
of Revolutionary Mov

Berlin, April 15.—The Lokal
er today publishes a Consta
despatch in which the corres
says there is good reason to
that the Sultan himself organ
military mutiny.

There are many methods of
communication between Yildiz K
the mutineers, Mahmud Mus
clared at the palace yesterday
full powers were conferred up
he would soon make short work
mutineers. This statement wa
municated to the Sultan who
caused Mahmud to be impriso

Getting Back to Normal

Constantinople, April 15.—Th
kish capital is again assuming
mal aspect and there is this
little outward evidence of the
ferment that has marked the
two days. The new ministry
promptly removed Yavuz Pash
the Commandership of the First
Corps and given this post to
Pasha. Nazim Pasha was min
war for a brief period prior to
the Kaimil cabinet and the
tents among the troops have
appointment to the post. H
popular and able officer and th
mand given him today will in
hood be a stepping stone to
turn to the ministry. It is
that his appointment will have
good effect toward restoring
discipline in the army.

In the army, Ismael Kemal
new president of the Chamber
puties and provoking order
Liberal union was received by
tan in audience today. His
in the course of the conversat
clared emphatically that the
welfare of the country made
sary a strict observance of the
ples of the constitution in cor
with the Shera Law.

Comparatively Peaceful

Constantinople, April 15.—A
stirring events of yesterday
early part of yesterday in
the capital, the successful format
new cabinet and the issuance
imperial proclamation ordain
observance of the Shera laws
preservation of the constitution
to bring about a comparatively
ful situation here last night.

The members of the new ca
which Towik Pasha is the g
zier, have been installed in o
The formation of the cab
though it is not composed a
(Continued on Page 2)

CANADA HO THE WINNING HAND

London Wheat Man Say
ply Now in Canada
Cover Half Grain Def
Have Great Effect

London, April 15.—An ex
member of Market Lane disc
wheat shortage in an articl
Morning Post. He says Can
4,000,000 quarters of old whea
it put into Market Lane wou
half the deficit. Canada hold
position, and any movem
makes would have an import
on the operations which the
ring may be contemplating.

LADY CARLING DIE IN LONDON, ONT.

London, Ont., April 15.—
Carling, wife of Sir John C
died here suddenly this m
of heart failure. She ha
been well for some time
is thought that the excitem
her granddaughter's we
yesterday was too much fo
She was 60 years old.