



P.S.—No "GROUCHY" Hired Men on this Farm. After a hard day in the field the Boss hands round the

**BUCK-EYES**

THE NEW  
**"Simplex"**  
 Roller Flour  
 Mill Plant

A completely self-contained installation, which produces a soft flour of good color, and for which the following advantages are claimed, compared with French Stones, Disintegrators, Attrition Mills, or other single reduction Mills:

1. Great economy of power.
2. Less heating of material ground.
3. Higher percentage of flour.
4. Flour better color.
5. Expenses of WEAR and TEAR (except re-setting of rolls at intervals of many months) almost nil.
6. Facility for inspection of product at each stage of reduction.

**NOTES**

These four mills are the latest invention of

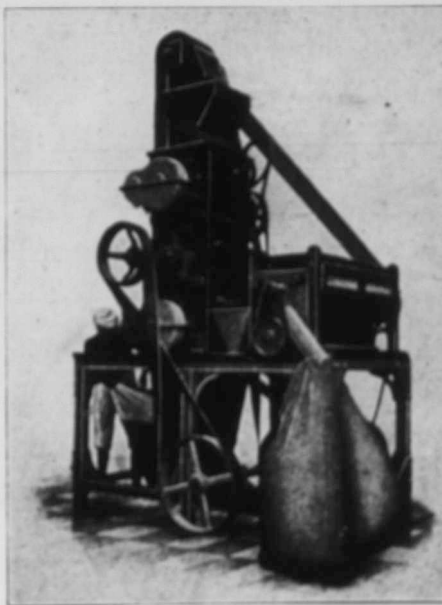
**Messrs. E. R. & F. TURNER Ltd.**  
 IPSWICH - ENGLAND

the oldest, largest, and most celebrated makers of Flour Mill Machinery in Great Britain, whose name alone is security for a first class article. They are especially designed for use in Canada, grinding the hardest wheat, and embody the very latest improvements in Roller Mills, producing the highest possible percentage of the Best Flour, or any lower grade required by the miller.

They are sold in various sizes, to produce from 17 to 41 barrels per day, can be had of much larger size if required.

For Catalogues and full particulars apply to our offices

**CANADIAN AGRICULTURAL MOTORS, Ltd., Ontario Avenue, Saskatoon**



This graduation of sizes and prices specially appeals to Institutions, store-keepers, large farmers or small owners in combination, and to all at a distance from milling centres.

Carefully note that the machine is self-contained, requiring no special building; it can be fixed to 1st floor of any one-story building or shed, as both grain, flour and offal are all handled at ground level, saving much labor and expense in lifting, and disposing with the usual hoists.

SOLE AGENTS FOR CANADA:

**Canadian Agricultural  
 Motors, Ltd.**

Ontario Avenue - SASKATOON  
 P.O. Box 581 Code ABC, 5th Edition

**THE PROCESS IS SIMPLICITY ITSELF.**

The cleaned wheat is automatically lifted into the hopper of the Three-roll Roller Mill (otherwise known as a Six-roll Mill), which is of Turners' latest revised pattern with internal sieves, etc. (see details in separate lists published), and is elevated from this mill in shape of meal with large bran extracted, to a Centrifugal Mill-covered Flour Dresser, from which one or more qualities of Flour, besides pollards and fine bran, are delivered to sacks.

**THE WHOLE PLANT IS MOUNTED ON A STEEL PLATFORM**

thus rendering it suitable for installation in the roughest single-storey building or shed.

**A WHEAT CLEANER AND SCOURER**

can be fixed on floor alongside Mill, and fed by a third elevator

**NOTES**

For dealing with inferior grain a wheat scourer or sifter and damper is supplied, thus securing flour of the best quality.

A sample mill can be seen in operation at our works where spare parts and accessories are kept and repairs promptly executed.

We make no charge for the erection of the mill in proper running order on customers' premises, and give instructions gratis.

Delivery free to any station east of Saskatoon, beyond which local freight must be paid by customer.

Every other description of milling or grain cleaning machines can be supplied and estimates given for the erection of mills of the largest capacity and the most modern and economical pattern.

It will Pay You to Carefully Read the Advertisements in the Guide every week. They offer many Money-Saving Opportunities