

SS. "WAR CONVOY"  
RECEIVING HER FINISHING TOUCHES AT OUR YARDS



SS. "WAR CHARGER"  
PASSING OUT OF FALSE CREEK FOR HER OFFICIAL TRIALS

## J. COUGHLAN & SONS, LTD.

SHIPBUILDERS AND ENGINEERS  
VANCOUVER  
BRITISH COLUMBIA

Builders of the following steel cargo vessels,  
each 8,800 Tons D. W.

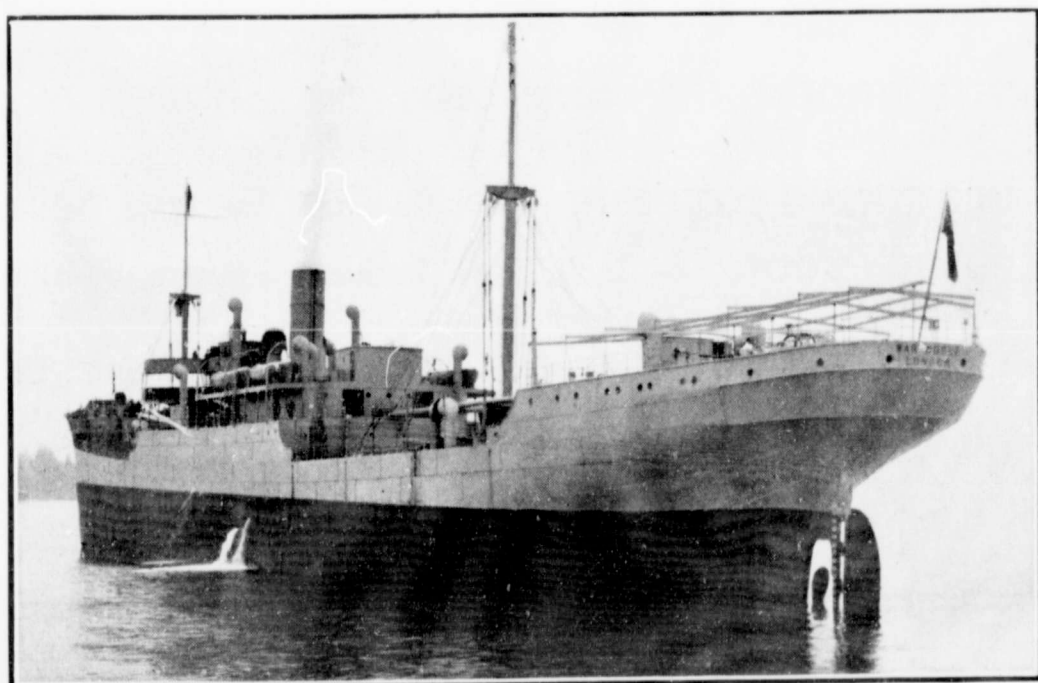
SS. "ALASKA"	SS. "WAR NOBLE"
SS. "WAR CAMP"	SS. "WAR CAVALRY"
SS. "WAR CHARGER"	SS. "WAR CONVOY"
SS. "WAR CHARIOT"	SS. "WAR COLUMN"
SS. "WAR CHIEF"	SS. "WAR COMPANY"

Builders of the following steel cargo vessels,  
each 8,100 Tons D. W.

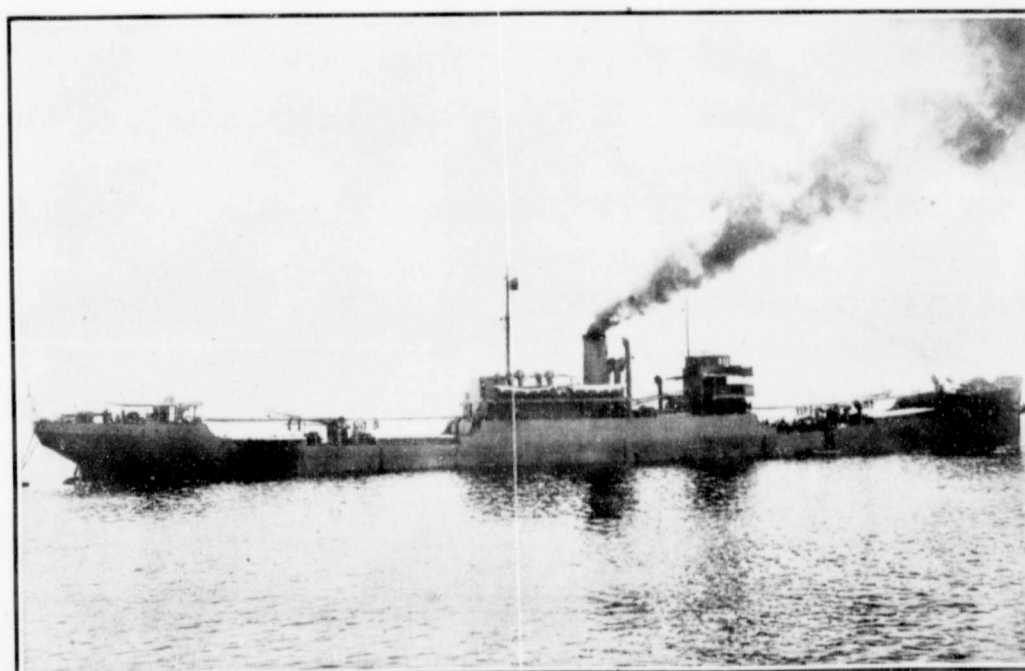
SS. CANADIAN IMPORTER"	SS. "CANADIAN EXPORTER"
---------------------------	----------------------------

SS. "CANADIAN  
INVENTOR"

SS. "CANADIAN  
PROSPECTOR"



SS. "WAR NOBLE"  
ON HER OFFICIAL TRIALS IN ENGLISH BAY



SS. "WAR CAMP"  
JUST PRIOR TO SAILING FOR GREAT BRITAIN ON HER MAIDEN VOYAGE