

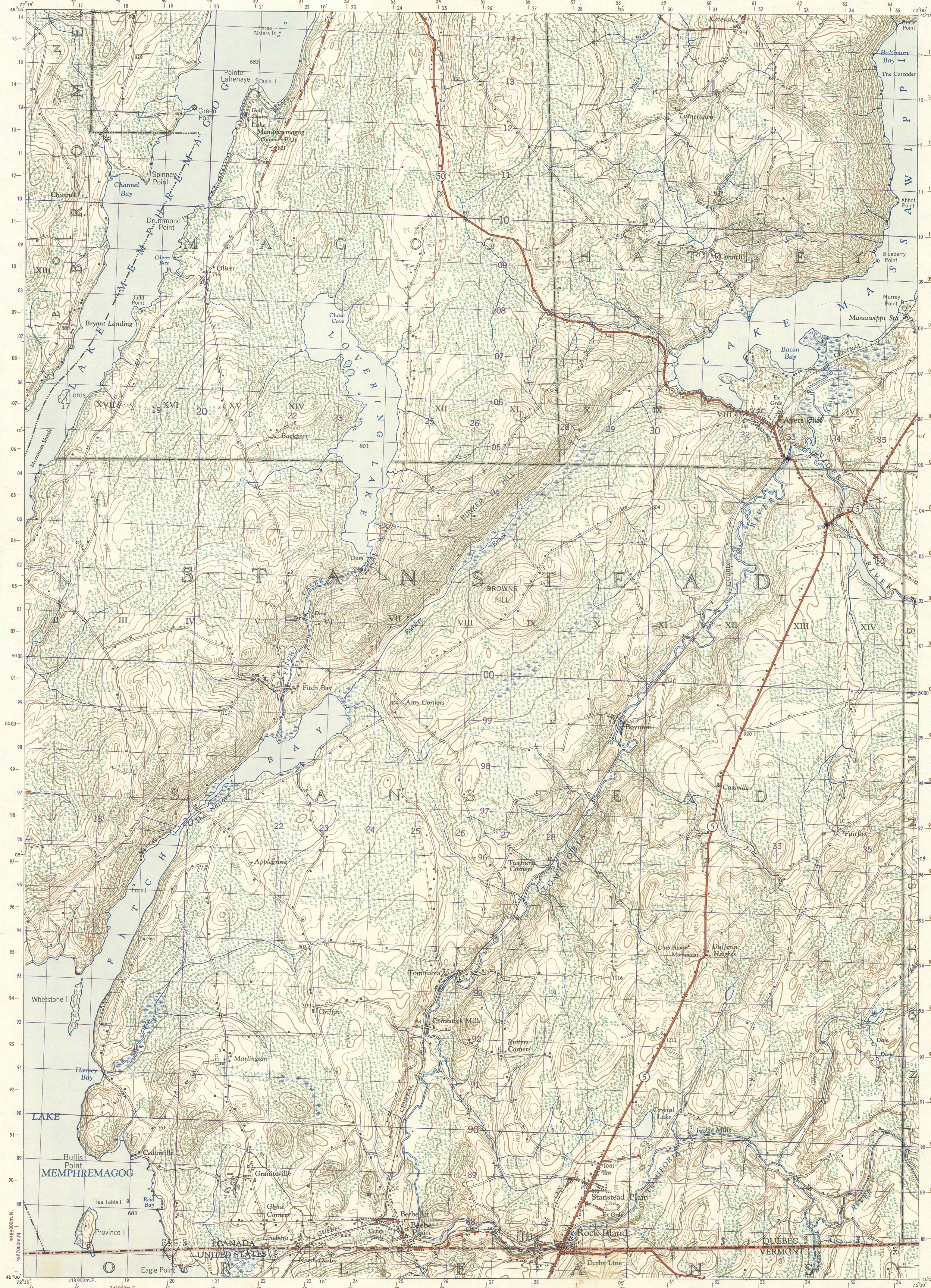
NATIONAL TOPOGRAPHIC SERIES

1:50,000

# MEMPHREMAGOG

THIRD EDITION

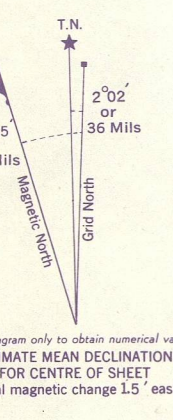
Refer to this Map as: 31 1/4 East  
EDITION 3 ASE  
SERIES A 761  
SHEET 31 1/4 EAST



CANADA  
DEPARTMENT OF NATIONAL DEFENCE  
ARMY SURVEY ESTABLISHMENT

### REFERENCE

- Roads:
- hard surface, all weather: more than 2 lanes
  - hard surface, all weather: 2 lanes
  - loose surface, all weather: 2 lanes wide or more
  - loose surface, less than 2 lanes: all weather dry weather
  - Private Road
  - Trail
  - Railway, double track: single track
  - abandoned
  - narrow gauge or electric
  - Bridge, underpass or overpass
  - Boundaries: International
  - Provincial
  - County
  - Township
  - Reservation, Indian
  - Military, Nat or Prov Parks, etc.
  - Electric Power Line: on Steel Towers on Wood Poles
  - Telephone trunk route
  - Triangulation Station
  - Boundary or Survey Monument
  - Bench Mark
  - Spot Elevation, (in feet): 693, 566
  - House, Barn
  - Buildings: Mill or Factory, small, Saw Mill, etc. 4SM
  - School
  - Church
  - Post Office
  - Mine or Open Cut
  - Cemetery or Churchyard
  - Quarry
  - Sand or Gravel Pit
  - Cliff
  - Cutting
  - Embankment, Dump, etc.
  - Lighthouse
  - Wharf or Pier
  - Foreshore Flats
  - Swamp or Marsh
  - Lake or Slough, non permanent
  - Glacier or Snowfield
  - Stream, intermittent
  - Contours, elevation
  - depression
  - Wooded Areas, deciduous
  - coniferous
  - orchard



TO GIVE GRID REFERENCE ON THIS SHEET FIGURES, IGNORE THE SMALLER FIGURES PRINTED AROUND THE MARGIN OF THE MAP. THESE ARE FOR FINDING THE FULL COORDINATES. USE ONLY THE LARGER FIGURES PRINTED IN THE MARGINS OR ON THE FACE OF THE MAP. VIC. 718

POINT		SCHOOL	
FOR STANDARD MILITARY GRID REFERENCE			
East	North	East	North
Take West edge of square in which position of figure printed opposite this line on North or South margin or on the line itself	Take South edge of square in which position of figure printed opposite this line on East or West margin or on the line itself	27	02
27	02	27	02
East 276	North 023	East 276	North 023
STANDARD MILITARY GRID REFERENCE 276023 (to nearest 100 Metres)			
Nearest similar grid reference: 200,000 Metres (Approximately 63 Miles)			

ONE THOUSAND METRE  
UNIVERSAL TRANSVERSE MERCATOR GRID  
ZONE 18

BROWN NUMBERED TICKS INDICATE THE 1000 METRE U.T.M. GRID ZONE 18

INDEX TO ADJOINING SHEETS

72°30'	31 1/4	31 1/8	21 1/8
45°30'	GRANBY	ORFORD	SHERBROOKE
45°00'	31 1/4	31 1/8	21 1/4
	SUTTON	MEMPHRE- MAGOG	COATCOOK
UNITED STATES			

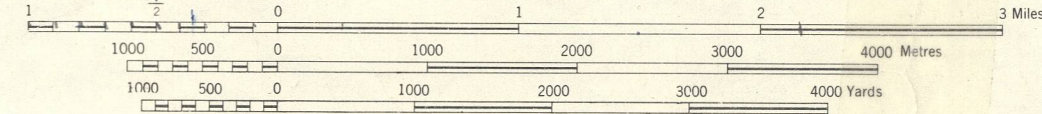
See "Index to Maps Available" for sheets published.

MEMPHREMAGOG  
QUÉBEC - VERMONT  
31 1/4 EAST  
THIRD EDITION  
6574-II  
A. M. S. SERIES V 713

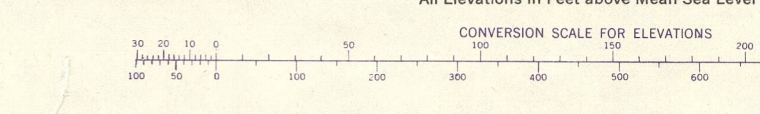
Surveyed, compiled, drawn and printed by the Army Survey Establishment R.C.E. 1913. Aerial photography by the R.C.A.F. 1945. Partially revised and converted from 1:63,360 map to 1:50,000 by the A.S.E. 1954.

MAGNETIC DECLINATION 16°33' WEST AT CENTRE OF SHEET, 1954. Annual magnetic change 1.5' easterly

Scale 1:50,000



NORTH AMERICAN DATUM



SUPERSEDED EDITION

CLASS SET