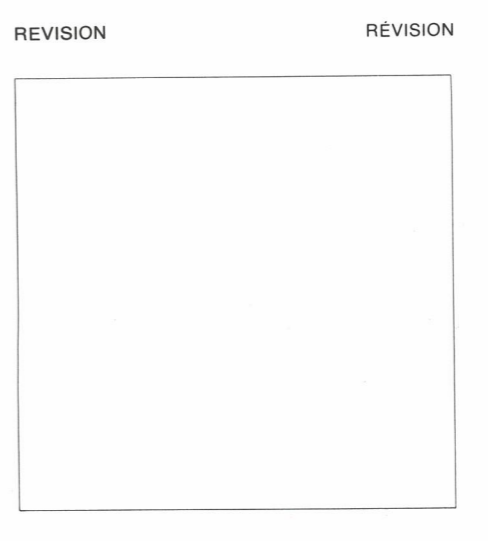
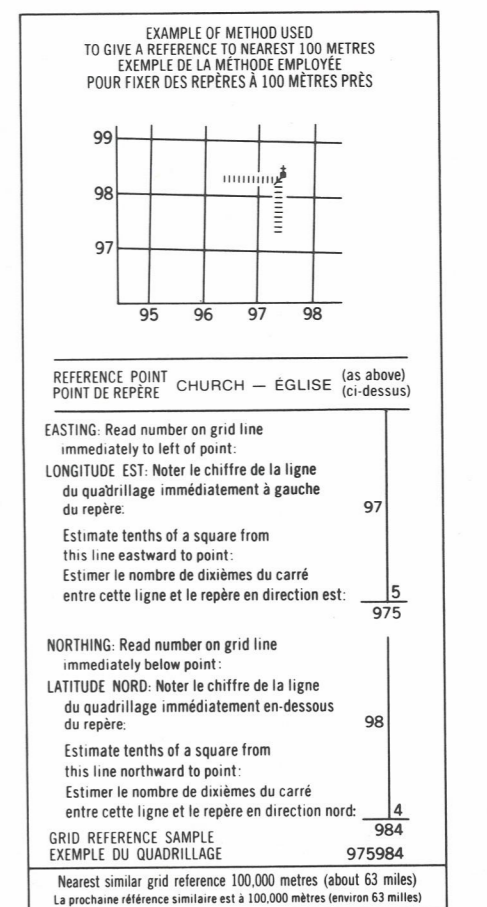
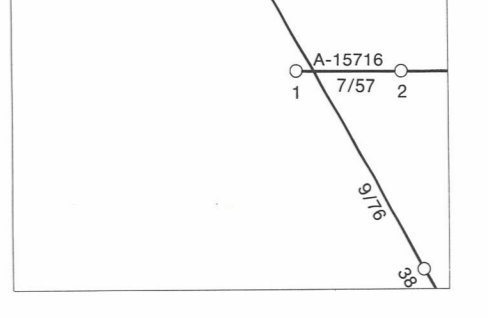
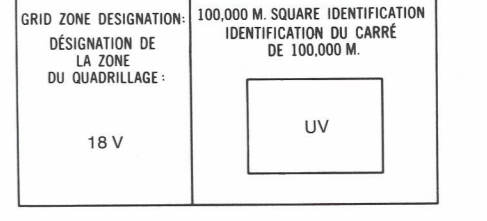
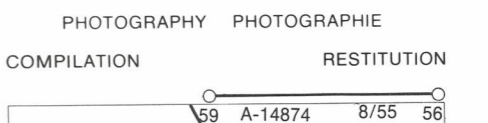


LEGEND - LÉGENDE

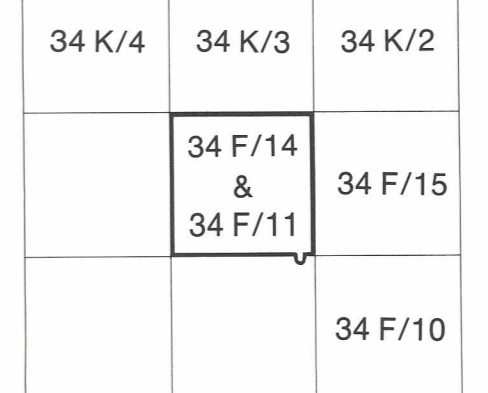
Legend table with two columns: English and French descriptions of symbols for roads, railways, bridges, buildings, and terrain features.

GLOSSARY - GLOSSAIRE

MORAINES MORAINES



ONE THOUSAND METRE UNIVERSAL TRANSVERSE MERCATOR GRID ZONE 18 QUADRILLAGE DE MILLE MÈTRES UNIVERSEL TRANSVERSE DE MERCATOR



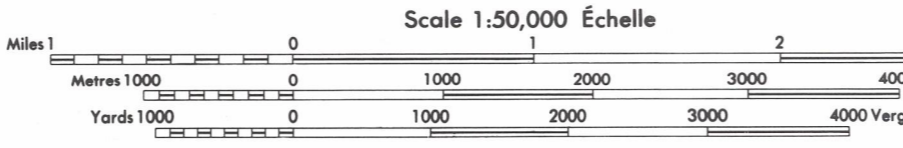
The 1978 MAGNETIC BEARING is 22°47' (405 mils) WEST OF GRID NORTH. ANNUAL CHANGE DECREASING 0.7. GRID NORTH is 1°54' (34 mils) WEST OF TRUE NORTH for centre of map.

Le REPERE MAGNETIQUE en 1978 est à 22°47' (405 mils) OUEST DU NORD DU QUADRILLAGE. VARIATION ANNUELLE DÉCROISSANTE 0.7. NORD DU QUADRILLAGE est 1°54' (34 mils) à l'ouest du NORD GÉOGRAPHIQUE au centre de la carte.

PRODUCED BY THE SURVEYS AND MAPPING BRANCH, DEPARTMENT OF ENERGY, MINES AND RESOURCES, OTTAWA, 1978. INFORMATION CURRENT AS OF 1977. COPIES MAY BE OBTAINED FROM THE CANADA MAP OFFICE, DEPARTMENT OF ENERGY, MINES AND RESOURCES, OTTAWA, OR YOUR NEAREST MAP DEALER. © 1978 HER MAJESTY THE QUEEN IN RIGHT OF CANADA, DEPARTMENT OF ENERGY, MINES AND RESOURCES.

ELEVATIONS IN METRES ABOVE MEAN SEA LEVEL CONTOUR INTERVAL 20 METRES NORTH AMERICAN DATUM 1927 TRANSVERSE MERCATOR PROJECTION

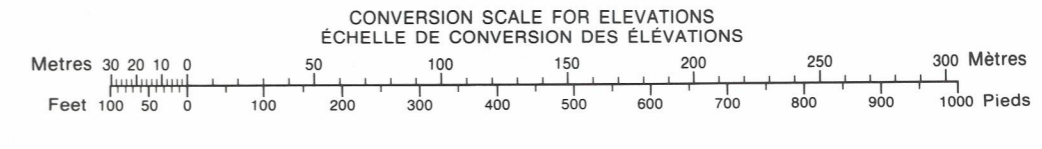
COTTER ISLAND QUÉBEC - NORTHWEST TERRITORIES



ELEVATIONS IN METRES ABOVE MEAN SEA LEVEL EQUIDISTANCE OF CURVES 20 METRES SYSTEME DE REFERENCE GEODESIQUE NORD-AMERICAIN 1927 PROJECTION TRANSVERSE DE MERCATOR

ON PEUT OBTENIR DES RENSEIGNEMENTS SUR LE LIEU ET L'ALTITUDE EXACTE DES REPERES DE NIVELLEMENT EN ECRIVANT AUX LEVÉS GEODESIQUES, DIRECTION DES LEVÉS ET DE LA CARTOGRAPHIE, OTTAWA.

ÉTABLI PAR LA DIRECTION DES LEVÉS ET DE LA CARTOGRAPHIE, MINISTÈRE DE L'ÉNERGIE, DES MINES ET DES RESSOURCES, OTTAWA, EN 1978. RENSEIGNEMENTS À JOUR EN 1977. CES CARTES SONT EN VENTE AU BUREAU DES CARTES DU CANADA, MINISTÈRE DE L'ÉNERGIE, DES MINES ET DES RESSOURCES, OTTAWA, OU CHEZ LE VENDOR LE PLUS PRÈS. © 1978 SA MAJESTÉ LA REINE DU QUÉBEC DU CANADA, MINISTÈRE DE L'ÉNERGIE, DES MINES ET DES RESSOURCES.



NOTE: OFF-SHORE ISLANDS LIE WITHIN THE DISTRICT OF KEEWATIN, N.W.T. NOTE: LES ÎLES DU LARGE FONT PARTIE DU DISTRICT DE KEEWATIN, T.N.-O.

COTTER ISLAND 34 F/14 & 34 F/11 EDITION 1