

**SOFT YELLOW POPLAR**

We carry at Cincinnati a very large stock of this wood especially selected for

**PLANING MILLS, COACH, CARRIAGE, AUTOMOBILE, SLEIGH MANUFACTURERS.**

**Furniture-Interior Finish.**

5/8 and 1 inch selected stock, 18 inch and up, 24 inch and up and 30 inch and up wide. We have 100,000 feet Prime, Soft 1 inch Yellow Poplar 18 inch and up wide, and 250,000 feet same stock 12 inch and up wide.

**RED QUARTERED WHITE OAK PLAIN WHITE**

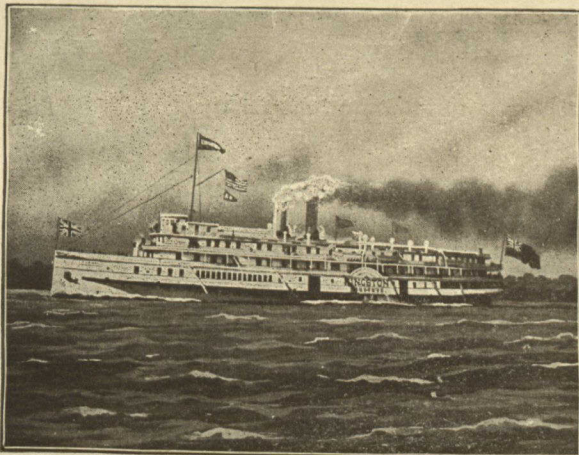
Figured Mahogany, Ash, Walnut, Cherry. 4 sizes second growth White Oak Wagon Poles, SAWED TAPERING, always in stock.

MIXED CARLOTS A SPECIALTY.

**Chas. F. Shiels & Co.**

Assembling Yards and Offices.

Cor. **GEST STREET, McLEAN AVENUE & COURT STREET.**  
**CINCINNATI, OHIO, U.S.A.**



**SUMMER OUTINGS**

**1000 ISLANDS, RAPIDS ST. LAWRENCE, MONTREAL, QUIANT QUEBEC** (celebrating Ter Centenary this summer) and the **WORLD FAMOUS SAGUENAY RIVER**

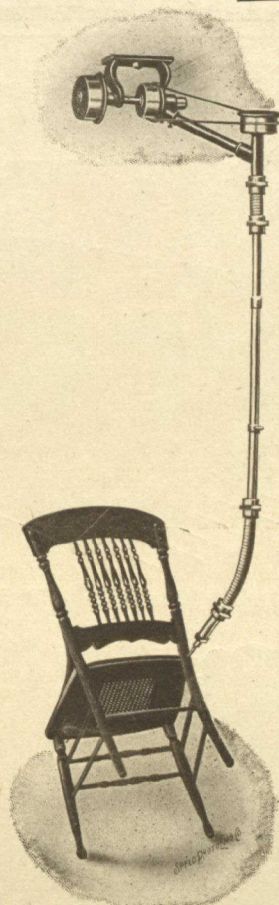
VIA THE

**RICHELIEU & ONTARIO NAVIGATION COMPANY.**

For illustrated booklet "Niagara to the Sea" send 6 cents in postage to

**THOS. HENRY,**  
Traffic Manager,  
MONTREAL.

**H. ROSTER CHAFFEE**  
A.G.P.A.  
TORONTO.



**L. G. McKNIGHT & Son Co.**

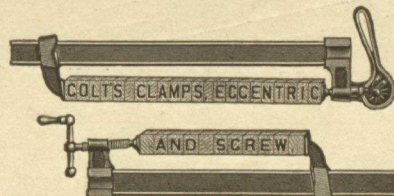
**Largest manufacturers of Chair Machinery in the world.**

Special machinery for piano, cabinet and furniture factories. Rubbing and polishing machines for finishing chairs and furniture. Nineteen different styles of single and multiple boring machines from one to fifteen spindles, with spread up to and including 49". Manufacturers of McKnight's patented automatic screw driver, twenty standard machines for sanding and finishing stock. Manufacturers of McKnight's patented adzing machine that shapes two thousand saddle wood seats per day of ten hours, four times as man / as any other machine on the market. Thirty years' experience in manufacturing machinery is sufficient guarantee that above statements are correct.

Write for photographs, prices, etc.

**L. G. McKNIGHT & Son Co.**  
Gardner, Mass. Thomasville N.C.

Canadian Representatives  
**The A. R. Williams Machinery Co., Limited**  
TORONTO.



**QUICK ACTING**

**TIME SAVING**

Adapted to all kinds of Woodwork, Carpentry and Building.

**CEMENT BLOCK MAKERS, CEMENT WORK, ETC.**

Ask for Catalogue No. 142.

**BATAVIA CLAMP COMPANY**

78 CENTRE STREET, BATAVIA, N. Y.

**J. A. DeCEW**

**CHEMICAL ENGINEER.**

Wood Distillation.

Utilization of

Chemical Pulp.

Waste Woods.

LUBRICATION ANALYSES,—REPORTS.

**Canadian Express Building.**  
**Montreal.**