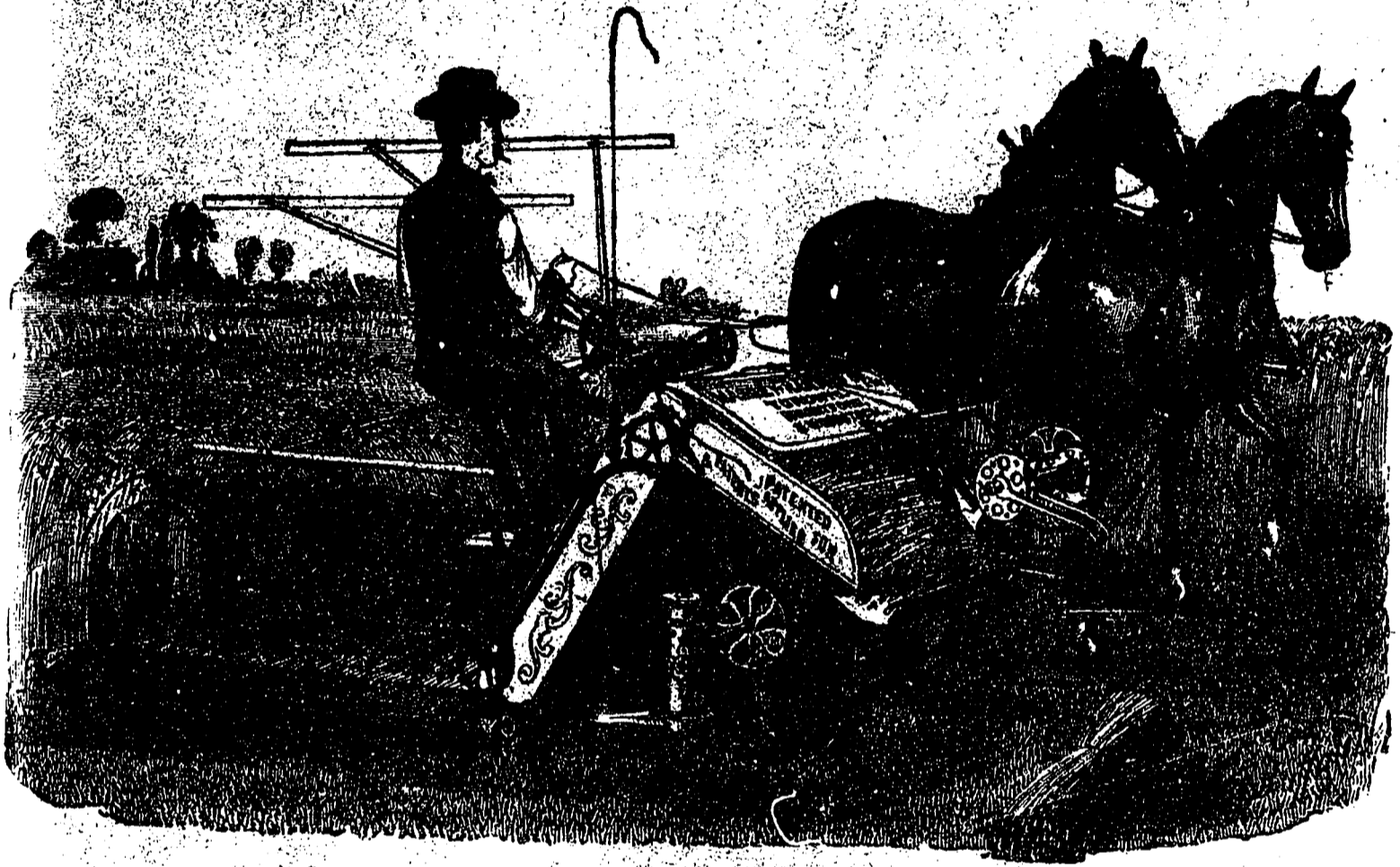


Massey-Harris Co., Ltd., Toronto, Can.

Works at TORONTO, BRANTFORD AND WOODSTOCK.

Patterson Light Steel Binder.

Easy to Start. Easy to Handle. Easy on the Team.



This Binder has earned a well deserved reputation for clean cutting, sure tying, light draft and general good work. Note a few points:—

The Steel Frame is light, yet strong—the channel bars keeping it perfectly rigid.

The arched channel steel elevator frame is securely secured by a strong brace to the main frame, preventing the machine sagging either backward or forward, and the elevator bars will run square and true. To prevent the tilting condition from springing the elevator frame, a strong steel brace is carried from the main sill to the front post, which supports the tilting lever bracket.

The Grain Wheel is in line with the Drive Wheel and can be raised and tilted on this line, and is in such perfect balance that it is only necessary to use one hand to tilt the Binder to any desired angle.

The Drive Wheel, with its steel tire and steel spokes, is made to stay—and so it will.

The Levers are arranged so as to be easily operated.

By judicious handling of the Reel and Tilt, grain ranging from the shortest barley to the longest rye can be readily handled.

The ends can be raised and lowered independently with a simple crank motion.

The Guards can be brought so near to the ground that the grain may be cut almost as close as with a mower.

The Binding Attachment is easily adjusted, and the Knotter is simple, sure and economical in the use of twine.

All oiling places are fitted with large oil reservoirs, and are readily got at.

The Twine is in sight of the operator, so he can quickly see when it needs replenishing.

Send for Special Catalogue of this Binder.