

The Mercantile FIRE INSURANCE COMP'Y.

Incorporated by Act of Ontario Legislature.
CAPITAL.....\$200,000.

HEAD OFFICE WATERLOO, ONTARIO.

OFFICERS:

J. E. BOWMAN, M.P., President.

J. W. WALDEN, Vice-President.

P. H. SIMS, Secretary.

Insurances granted on all descriptions of property
against loss or damage by fire, at current rates.
Agencies will be opened at the principal towns in Ont.

CANADIAN

Mutual Fire Insurance Company.

HEAD OFFICE, HAMILTON.

The Water-works Branch,

embracing Toronto, is confined entirely to places pos-
sessing efficient systems for extinguishment of fires.
Policies in this branch issued only on the ONE YEAR
MUTUAL PLAN, thereby rendering the possibility of
any assessments whatever very improbable.

President—JOHN BARRY, Esq., Barrister, Hamilton.
Vice-Pres.—JOHN EASTWOOD, Esq., Merchant, "

Manager and Secretary—EDWARD HILTON.

Solicitors—Messrs. BARRY & DUFF, Hamilton.

THE GEORGE MOORHEAD MANUFACTURING COMP'Y.

IMPORTERS OF

CARPETS, CURTAINS, &c.,

AND MANUFACTURERS OF

FURNITURE

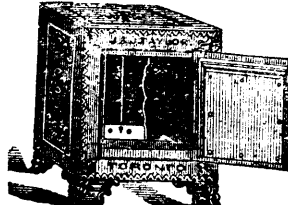
in all its branches.

Bank Offices,
Insurance Offices,
Counting Rooms,
of every description fitted up in the most modern style.

OFFICE AND MANUFACTORY,
LONDON, ONT.

TORONTO SAFE WORKS.
J. & J. TAYLOR.

Nos. 117 to 119
Front St. East,



22 Victoria Square,
C. K. Adams,
Montreal Agency.

TORONTO.

THE RELIANCE MUTUAL FIRE INSURANCE COMPANY.

Head Office—N.W. cor. King and Church Streets, Toronto.

President WARRING KENNEDY. | Vice-President..... W. J. SHAW.

DIRECTORS.

WARRING KENNEDY, of Samson, Kennedy & Gem-
mel, Toronto.
W. J. SHAW, of W. J. Shaw & Co., Toronto.
A. J. ROBERTSON, of J. Robertson Son & Co., Toronto

G. W. TORRANCE, of Cramp, Torrance & Co., Toronto.
R. S. WILLIAMS, of Toronto
EDWARD BULL, M.D., do
ROBERT BARBER, of Barber Bros., Streetsville.

BANKERS ... THE DOMINION BANK.

MANAGER AND SECRETARY ... A. T. WOOD.

SOLICITORS .. DELAMERE, BLACK & REESOR.

This Company has two distinct branches, viz, Toronto and General. The strictest economy is practiced in every department and prompt and liberal settlements made.

THE Thomson & Williams

MANUFACTURING COMPANY, (LIMITED.)

STRATFORD, Ont.

PAID-UP CAPITAL, \$100,000.

BUILD

Engines, Boilers, Mill Stones, Mills
and Factories of all Kinds.



Sole manufacturers of the JOHN-
STON WROUGHT-IRON HAR-
VESTERS.

Dealers in Bolting Cloths, Saws
Belting and all Mill Supplies.

Contractors for Water
Works for Cities, Towns,
&c.

R. THOMSON, Pres. A. R. WILLIAMS, Vice-Pres
A. GRANT, Secretary and Treasurer.

VICTORIA MUTUAL

FIRE INSURANCE COMPANY OF CANADA

Hamilton Branch

Within range of Hydrants in Hamilton.

Water-Works Branch:

Within range of Hydrants in any locality having
efficient water-works.

General Branch:

Farm and other non-hazardous property only.

One branch not liable for debts or obligations of the
others.

GEO. H. MILLS, President.

W. D. BOOKER, Secretary.

HEAD OFFICE HAMILTON, ONTARIO.

A. M. WADE, Imperial Buildings, No. 30 Adelaide
street East, Toronto.

BY SCOTT, SUTHERLAND, & CO.

INSOLVENT ACT OF 1875, AND
AMENDING ACTS.

In the matter of E. B. SANDERSON,
Boot and Shoe Manufacturer, of
Toronto, an Insolvent.

The subscribers have received instructions from
John Turner, Esq., Official Assignee,
TO OFFER FOR SALE

BY PUBLIC AUCTION,

AT THEIR WAREROOMS,

No. 29 Front Street West, Toronto,
ON

Monday, 17th June Inst., at
12 o'clock noon sharp,

The following assets, belonging to the estate of the in-
solvent:—

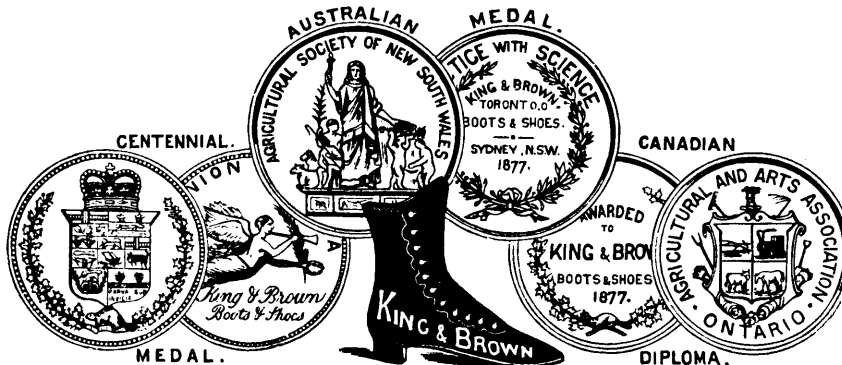
Boots and shoes, all new and fresh.....\$387 65
Leather and Findings.....8 4 29
Machinery and Tools.....854 90
Store Furnishings and Fixtures, including safe... 469 50

Total\$2,526 34

TERMS—Ten per cent. deposit time of sale, balance
on checking stock.

JOHN TURNER,
Official Assignee.

Office Turner, Clarkson & Co.,
Toronto, 11th June, 1878.



THE BEST IS THE CHEAPEST. We have gained our reputation by using only
the finest and best material (no shoddy) in the manufacture of our Boots and
Shoes, which we make in half-sizes and widths as follows:

MENS, B $\frac{1}{2}$, C, C $\frac{1}{2}$, D, D $\frac{1}{2}$.

BOYS, B, B $\frac{1}{2}$, C, C $\frac{1}{2}$.

YOUTHS, B, B $\frac{1}{2}$, C.

LADIES, AA, A, A $\frac{1}{2}$, B, B $\frac{1}{2}$, C, C $\frac{1}{2}$

MISSSES, B, B $\frac{1}{2}$, C, C $\frac{1}{2}$.

CHILDREN, B, B $\frac{1}{2}$, C, C $\frac{1}{2}$.

A greater variety than any other house in the Dominion. Prices and terms to suit
the times. Inspection invited.

KING & BROWN, 27 Front St. East, Toronto.