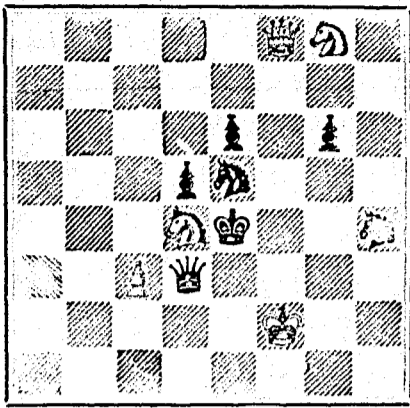


PROBLEM No. 220.
By Herr Andersson.
BLACK.



WHITE

White to play and mate in three moves.

GAME 351ST.

CHESS IN THE UNITED STATES.

Game played at St. Louis, U.S., March 4th, 1879, between Mr. Max Judd and Mr. Frank P. Merrill.

(Remove White Q's K1—French Defence.)

WHITE.—(Mr. Judd.)

1. P to K 4
2. P to K B 4
3. P to K 5
4. K to K B 3
5. P to Q B 3
6. P to Q 2
7. R to Q Kt sq
8. P to K 2
9. P to Q B 4
10. Castles
11. B takes Kt
12. Q to Q B sq
13. Q takes P
14. Q takes Kt
15. P to Q Kt 3
16. K to R sq
17. Q R to Q sq
18. K to Kt 5 (e)
19. P takes E
20. K to Kt sq
21. Q to K R 5
22. Q to R 6
23. R to B 2
24. Q takes Q
25. R to K sq
26. R to K 3
27. P to K Kt 3
28. R takes R (f)
29. K to B 2
30. P takes P
31. K to Kt 3
32. P to Q R 3
33. P to K R 4
34. K to Kt 4
35. P takes P
36. K to Kt 5
37. K to Kt 4
38. R to B 3

BLACK.—(Mr. Merrill.)

1. P to K 3
2. P to Q 4
3. P to Q B 4
4. K to Q B 3
5. Q to Q Kt 3
6. R to K R 3
7. R to Q 2
8. P to Q 5
9. Kt to K B 4
10. Kt to K 5 (a)
11. P takes B
12. Kt to Q 5
13. Kt takes B (ch) (b)
14. B to K 2
15. R to Q B 3
16. R to Q sq
17. Castles
18. B takes Kt
19. R to Q 5 (d)
20. Q to Q sq
21. P to K Kt 3
22. R to K 5 (e)
23. Q takes P
24. R takes Q
25. P to Q sq
26. R to Q 5
27. R to K B 4
28. Kt P takes R
29. P to B 5
30. R takes P (ch)
31. R to B 4
32. P to Q R 4
33. R to B 5
34. P to Q R 5
35. B takes P
36. R to B 4 (ch)
37. P to K R 4 (ch)
38. R to B 5

NOTES.

- (a) Although Black loses a Pawn by the exchange, he removes from the board one of White's Bishops, which Mr. Judd always regrets to part with.
- (b) The other Bishop now goes, and White's position is weakening.
- (c) White calculated on advancing P to K R 4, if Black captures, but he was prevented from doing so by B-K's next move.
- (d) The proper move.
- (e) The last four moves are beautiful.
- (f) Playing for a drawn game.

GAME 352ND.

Played at Montreal, March 24th, 1879, between Mr. J. W. Shaw, of Montreal, and Mr. J. G. Foster, of Halifax, N.S.

(Scotch Gambit)

WHITE.—(Mr. Shaw.)

1. P to K 4
2. Kt to K B 3
3. P to Q 4
4. P to Q B 4
5. Castles
6. B to K Kt 5
7. B to R 4
8. B to K Kt 3
9. P to B 3
10. P to K 3
11. Kt takes Kt (d)
12. Kt takes Kt
13. P takes P
14. Kt to B 3
15. B takes B
16. Kt to K 4
17. R to K sq
18. P to K Kt 3
19. Kt to B 6 (ch)
20. Q to R 5 (e)

BLACK.—(Mr. Foster.)

1. P to K 4
2. Kt to Q B 3
3. P takes P
4. B to B 4
5. K Kt to K 2 (d)
6. P to K R 3
7. P to K Kt 4 (d)
8. Kt to K Kt 3
9. Q to B 3 (e)
10. Q Kt takes P
11. Castles
12. Q takes Kt
13. B to Q 3
14. P to Q R 3
15. Q takes B
16. Q to K B 5
17. P to Q 4
18. Q to B 2
19. K to R sq
20. B to B 4

And White announced mate in two moves

- (a) P to Q 3, bringing the Q B into play, is the right move at this point.
- (b) Bold but injudicious.
- (c) This move only precipitates White's attack.
- (d) Losing a piece at once. After this move Black has no chance of retrieving his game.
- (e) An interesting termination.

SOLED UPONS.

Solution of Problem No. 216.

WHITE.

1. P to B 6
2. B to Kt sq (ch)
3. Kt mates.

BLACK.

1. Q or B takes P
2. K to K 4

If Black move otherwise, then 2 Kt to B 6 (ch) etc.

Solution of Problem for Young Players No. 216.

WHITE.

1. Q to R 8 (ch)
2. Q to K Kt 8
3. Q mates.

BLACK.

1. K moves
2. K moves.

PROBLEMS FOR YOUNG PLAYERS, No. 217.

WHITE.

Position in end-game.

- K at K 2
- Q at K Kt 3
- B at K B 7
- B at K R 6
- Pawn at Q B 2

BLACK.

- K at K R sq
- Q at K 2
- R at K B sq
- B at K Kt 3
- Kt at K 5
- Pawn at K Kt 2

White to play and mate in three moves.



NOTICE.

Friday, 11th inst., being GOOD FRIDAY, this Office and the three Receiving Houses will be closed at 10 a.m., unless the mails received up to that time shall not then have been distributed.

The afternoon mails will be closed at 10 a.m., and the night mails, at the usual hours.

10th April, 1879.

G. LAMOTHE, P. M.



LOBSTER FISHERY.

DEPARTMENT OF MARINE & FISHERIES,
FISHERIES BRANCH,
OTTAWA, 22nd March, 1879.

PUBLIC NOTICE is directed to the following Fishery Regulations adopted by the Governor-General in Council, on the 13th inst., rescinding all Orders in Council relating to the Lobster Fishery:

1. In that part of the Province of Nova Scotia, comprising parts of the Counties of Cumberland and Colchester, on the Bay of Fundy, the Counties of Hants, Kings, Annapolis, Digby, Yarmouth, Shelburne, Queens, Lunenburg, Halifax, Guysborough, Richmond, Cape Breton and Victoria; also in the Province of New Brunswick, comprising part of the County of Westmorland, on the Bay of Fundy, and the Counties of Albert, St. John and Charlotte; it shall be unlawful to fish for, catch, kill, buy, sell or (without lawful excuse) possess any Lobsters from the first day of August to the first day of April in each year.
2. In that part of the Province of Nova Scotia, comprising the Counties of Inverness, Antigonish, Pictou, and parts of Colchester and Cumberland, on Northumberland Strait; and that part of the Province of New Brunswick, comprising the Counties of Westmorland (in part), Kent, Northumberland, Gloucester and Restigouche; also in the Province of Quebec and Prince Edward Island; it shall be unlawful to fish for, catch, kill, buy, sell or (without lawful excuse) possess any Lobsters from the 20th day of August to the 20th day of April in each year.
3. It shall be unlawful at any time to fish for, catch, kill, buy, sell or possess any female Lobsters in spawn or with eggs attached, soft-shelled, or any young Lobsters of less size than nine inches in length measuring from head to tail exclusive of claws or feelers; and when caught by accident in nets or other fishing apparatus lawfully used for other fish, they shall be liberated alive at the risk and cost of the owner of the net or other apparatus, or by the occupier of the fishery, in either of whom shall devolve the proof of such actual liberation.

By order,
W. F. WHITCHER,
Commissioner of Fisheries

AGENTS, READ THIS.

We will pay Agents a salary of \$100 per month and expenses, or allow a large commission to sell our new and wonderful products. We mean what we say. Sample free. Address:

SHERMAN & CO., Marshall, Mich.

25 FANCY CARDS with Name 10c. Plain or Gold. Agents' Output 10c. 150 Styles. Hall & Co. Hudson, N.Y.

IMPORTANT NOTICE.

THE
Burland-Desbarats Lithographic Co.
5 & 7 BLEURY ST.,

Begs to inform the BANKERS, MERCHANTS and BUSINESS MEN of the Dominion, that their large establishment is now in full operation, and that they are prepared to do all kinds of

ENGRAVING,
ELECTROTYPING,
STEREOTYPING,
LITHOGRAPHING
and TYPE PRINTING,

Photo-Electrotyping & Wood Engraving

IN THE BEST STYLE, AND AT LOW PRICES.

Special attention given to the reproduction by

Photo-Lithography

OR
MAPS, PLANS, PICTURES OR BOOKS
OF ANY KIND.

From the facilities at their command, and the completeness of their establishment, the Company feel confident of giving satisfaction to all who entrust them with their orders.

G. B. BURLAND,
Manager.

The Scientific Canadian

MECHANICS' MAGAZINE,
AND
PATENT OFFICE RECORD,
A MONTHLY JOURNAL

Dedicated to the advancement and diffusion of
Practical Science, and the Education of
Mechanics.

THE ONLY SCIENTIFIC AND MECHANICAL PAPER
PUBLISHED IN THE DOMINION.

PUBLISHED BY

THE BURLAND-DESBARATS LITH. CO.

OFFICES OF PUBLICATION:

5 and 7 Bleury Street, Montreal.

G. B. BURLAND, General Manager.

F. N. BOXER, ARCHITECT & CIVIL ENGINEER, Editor.

TERMS:

One copy, one year, including postage... \$2.00
One copy, six months, including postage... 1.10
Subscriptions to be paid in ADVANCE.

The following are our advertising rates:—For one monthly insertion, 10 cts. per line; for three months, 2 cts. per line; for six months, 8 cts. per line; for one year, 7 cts. per line; one page of illustration, including one column description, \$30; half-page of illustration, including half column description, \$20; quarter-page of illustration, including quarter column description, \$10. 10 per cent. off on cash payments.

INVENTIONS AND MACHINERY, or other matter of an original, useful and instructive character, and suitable for subject matter in the columns of the MAGAZINE, and not as an advertisement, will be illustrated at very reduced rates.

REMITTING MONEY.—All remittances of money should be in the form of post-orders. When these are not available, send money by registered letters, checks or drafts, payable to our order. We can only undertake to become responsible for money when sent in either of the above ways.

This journal is the only Scientific and Mechanical Monthly published in Canada, and its value as an advertising medium for all matter connected with our Manufacturing, Foundries, and Machine Shops, and particularly to Inventors, is therefore apparent.

JUST PUBLISHED

CHISHOLM'S ALL-ROUND ROUTE AND PANORAMIC
GUIDE OF THE ST. LAWRENCE,

With corrections to date. It contains full descriptions of the points of interest on the "All Round Route," including Hudson River, Trenton and Niagara Falls, Toronto, Ottawa, Montreal, Quebec, Saguenay River, White Mountains, Portland, Boston, New York. It is profusely illustrated, and is furnished with maps of the Route, and a fine panoramic view of the St. Lawrence River. For sale by booksellers and news agents. Sent post-paid to any address on receipt of the price, 50 cts.

G. R. CHISHOLM & BROS.,

175 Bonaventure street, Montreal.

British American BANK NOTE COMPANY,

MONTREAL.

Incorporated by Letters Patent.
Capital \$100,000.

General Engravers & Printers

Bank Notes, Bonds,
Postage, Bill & Law Stamps,
Revenue Stamps,
Bills of Exchange,
DRAFTS, DEPOSIT RECEIPTS,
Promissory Notes, &c., &c.,
Executed in the Best Style of Steel Plate
Engraving.

Portraits a Specialty.

G. B. BURLAND,

President & Manager.

THE COOK'S FRIEND

BAKING POWDER

Has become a HOUSEHOLD WORD in the land, and is
HOUSEHOLD NECESSITY

every family where Economy and Health are studied. It is used for raising all kinds of Bread, Rolls, Pastry, cakes, Griddle Cakes, &c., &c., and a small quantity used in Pie Crust, Puddings, or other Pastry, will save half the usual shortening, and make the food more digestible.

THE COOK'S FRIEND

SAVES TIME,
IT SAVES TEMPER,
IT SAVES MONEY.

For sale by storekeepers throughout the Dominion, and wholesale by the manufacturer.

W. D. McLAREN, UNION MILLS,

17-19-52-362

55 College Street.

For Blanc-mange, Puddings, Custards,
Children's and Invalids' Diet,
And all the uses of Arrowroot.

Durham Corn Flour!!

Has a World-wide reputation,
And is distinguished for
Uniformly Superior Quality.

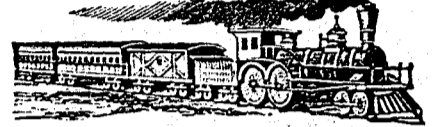
ROWNTREE'S ROCK COCOA

Being Pure Cocoa will not thicken in the
cup, is therefore a thin, not a thick,
pasty drink.

It is one of the most nutritious and agreeable kinds of
food which can be used in liquid form, as whilst admir-
ably suited to the sick, is a luxury to those who are in
health.

WM. JOHNSON,

28 St. Francois Xavier St.,
MONTREAL. SOLE AGENT.



Q. M. O. & O. RAILWAY. Eastern Division.

COMMENCING TUESDAY, FEBRUARY 11th.
Trains will be run on this Division as follows:—

Leave Hochelaga. Arrive in Quebec.
EXPRESS..... 3:09 p.m..... 10:10 p.m.
MIXED..... 7:10 a.m..... 5:50 p.m.

RETURNING.

Leave Quebec. Arrive in Montreal.
EXPRESS..... 12:45 p.m..... 7:30 p.m.
MIXED..... 6:15 p.m..... 10:10 a.m.

Trains leave Mile-End Station ten minutes later.
Tickets for sale at offices of Starmer, Leye & Alden,
Agents, 232 St. James Street, and 158 Notre Dame
Street, and at Hochelaga and Mile-End Stations.

J. T. PRINCE,

Gen'l. Pass. Agent.

Feb'y. 7th, 1879.



NOTICE TO CONTRACTORS.

SEALED TENDERS, addressed to the undersigned
will be received at this office until

SATURDAY, THE 19TH APRIL NEXT.

inclusively, for the construction and fitting up of a heat-
ing apparatus at the Departmental Buildings, in course
of construction, at Quebec.

The plans and specification of the work may be seen
at this office, every day after the 26th instant, between
the hours of 10 a.m. and 4 p.m.

The Tenders must be endorsed, "Tender for a Heat-
ing Apparatus."

The Department will not be bound to accept the lowest
or any of the Tenders.

(By order)

ERNEST GAGNON,

Secretary.

Department of Agriculture and Public Works. }
Quebec, 14th March, 1879.

N.B.—No reproduction unless by special written
order.

CHEAPEST AND BEST.



JOHN DOUGALL & SON,

215 and 220, St. James Street, Montreal

Electrotyping and Job Printing, Chromatic and plain.