

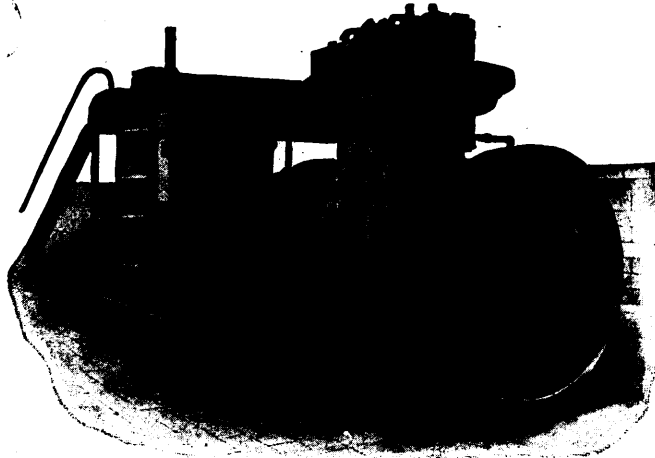
WEBER

**Suction Gas Producers and Gas Engines
SAVE 50% to 75% OF YOUR FUEL COST**

INVESTIGATE!

The most economical and reliable power for operating Electric Light Plants, Flour Mills, Factories, Mining Machinery, etc.

The Weber suction Gas Producer generates gas automatically, as required by the load on engine, from Anthracite Pea Coal, Charcoal, Coke, etc.



In actual operation we have repeatedly shown a fuel economy of $\frac{7}{8}$ of 1 lb. coal per B.H.P. hour.

In addition to making an immense saving in fuel, Weber Plants dispense with a large water supply and eliminate the numerous annoying and expensive boiler troubles common with steam plants.

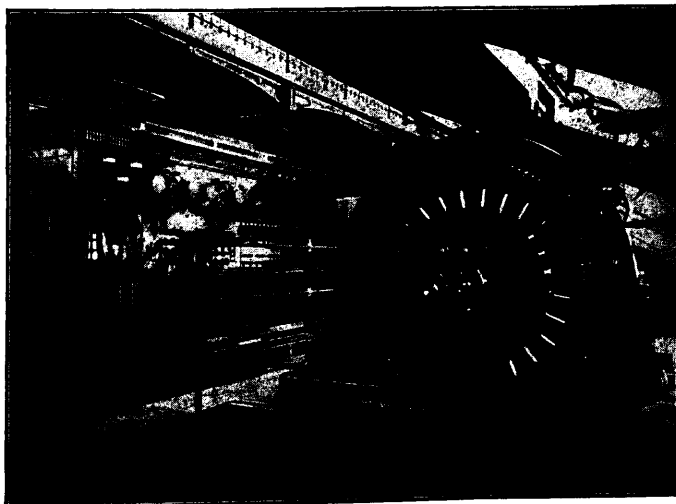
**Complete WEBER GAS ENGINE and PRODUCER PLANT
Ask for Descriptive Catalog.**

**1 HORSE POWER
1 HOUR
1 POUND COAL**

**WEBER GAS ENGINE CO.
BOX 411, Kansas City, MO.**

**PLANTS
IN SIZES TO
1,000 H.P.**

ALLIS - CHALMERS - BULLOCK LIMITED



One of our 80 K. W. Belted Alternating Current Generators and Auxiliary Apparatus Forming the Lighting Plant of the Hospital Mont St. Jean de Dieu, Montreal.

“Allis-Chalmers” Mining, Saw Mill and Flour Mill Machinery, Engines, Pumps and Turbines.

“Bullock” Electric Apparatus.

“Ingersoll” Air Compressors, Rock Drills and Coal Cutters.

“Lidgerwood” Hoisting Engines.

Head Office and Works

MONTREAL

District Offices {

TORONTO - 810 TRADERS BANK BUILDING.
WINNIPEG - 251 NOTRE DAME AVE.
NELSON - JOSEPHINE ST.

MONTREAL - 82 SOVEREIGN BANK BUILDING.
VANCOUVER - 416 SEYMOUR ST.
NEW GLASGOW - N.S. TELEPHONE BUILDING.