

A  
VALVE  
YOU  
CAN  
RELY  
ON  
—  
SEND  
FOR  
PRICES

## CROSBY STEAM APPLIANCES EXCEL

Steam Engine Indicators.  
Recording Gages.  
Revolution Counters.  
Pressure and Vacuum Gages.  
Lubricators, etc.

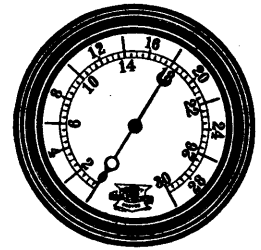


Stationary and Marine Valves.  
Water Relief Valves.  
Blow-off Valves.  
Globe and Angle Valves.  
Single Bell Chime Whistles.

SEND FOR CATALOGUE

**CROSBY STEAM GAGE and VALVE CO.**  
BOSTON, NEW YORK, CHICAGO, LONDON

A TRUTHFUL GAGE  
IS THE  
ONLY GOOD GAGE



The B. Greening Wire Co., Hamilton, Ont., will build an addition to their factory, at a cost of about \$7,000.

The General Electric Co., Schenectady, N.Y., will establish a factory in Ottawa, for the trimming and preparation of mica.

The Canadian Northern Railway Co., will build a new 1,700,000 bushel elevator at Port Arthur, Ont.

The Bell Telephone Co. of Canada is installing 400 long distance telephones in the Windsor Hotel, Montreal. The work of installation is nearing completion and it is expected that by Coronation Day anyone of the guests without leaving his room will be able to secure a connection to any part of the continent.

The Canada Paper Co., Montreal, will rebuild its mills at Windsor Mills, Que. The new mills will consist of seven large stone, brick and steel buildings, which will cost about \$250,000, and have a capacity of 50 tons of pulp and 35 tons of paper per day.

The Canadian American Coal & Coke Co., Frank, N.W.T., will increase the capacity of their plant. The present output of coal is 500 tons per day, which is to be increased to 1,000 tons.

The Stuart-Arbutnot Co., Winnipeg,

Man., have just completed a contract with the Ogilvie Milling Co., for 21 gasoline engines of the Howe pattern.

La Compagnie Industrielle de Montmagny, Montmagny, Que., has applied for incorporation with \$50,000 capital, to manufacture coffins, doors, windows, washing machines, etc. The applicants include Alfred Blais, St. Aubert, Que., Amedee Cote, and Maurice Rousseau, both of Montmagny.

The ratepayers of Brockville, Ont., will vote on a by-law to grant a bonus of \$20,000 to the Union Hat Works, St. John's, Que, to locate in Brockville.

The Winnipeg Elevator Co. are erecting a 40,000 bushel elevator at Milestone, N.W.T.

The Northern Aluminum Co., Montreal, has been incorporated with \$500,000 capital, to manufacture bronzes, commercial alloy, etc. The provisional directors include G. G. Foster, Montreal, A. V. Davis, Pittsburg, Pa., and F. A. Stoughton, Shawinigan, Que.

The Hiram L. Piper Co., Montreal, has been incorporated with \$40,000 capital, to manufacture railway and electrical supplies, ship lamps, etc. The charter members include William Carruthers, Montreal, H. L. Piper, and J. E. Carruthers, both of Toronto.

## THE BRITISH COLUMBIA LEAD INDUSTRY.

Mr. A. S. Goodeve, of Rossland, B.C., who was a delegate from the Board of Trade of that city to the recent Toronto convention of Canadian Boards of Trade, speaking of the development of the silver lead industry, a question of vast importance to British Columbia, said:—"I feel sure that we shall receive the support of all the manufacturers of Eastern Canada in our endeavor to secure the Canadian market for our home mining. Various men whom I interviewed expressed themselves as much pleased at the rapid development and great value of the wealth of our mineral resources. Up to the present time the value of the lead products mined in British Columbia has reached the large total of \$25,000,000, and the present position is such that when the readjustment of the tariff asked for at the conference is granted, British Columbia will be in a position to turn out fifty thousand tons per annum. Even at the present low price of lead, this would be equal to, including the earnings for transportation and refining, about \$6,000,000 per annum. There is no other manufacturing industry where all the raw material can be secured within the country. The ore is mined by Canadian miners, the lime for flux is quarried by Canadians, the coal and coke are mined in Canada by Canadians, the dry ores used in connection with the smelting are mined in Canada, and all the labor used is skilled, at the highest rate of wages. Indirectly, this has a large bearing on the mining and treatment of low-grade dry ores, as in smelting silver lead ores the actual charge only contains from 15 to 20 per cent. of silver lead ores, the balance being made up of low grade gold and copper ores, containing a large percentage of iron. Thus we are enabled to mine large quantities of low-grade dry ores, which otherwise would be unprofitable.

"Miners as a class are proverbial for their good living," said Mr. Goodeve, "and among no other class is there so great a consumption per capita of high-grade food products such as are produced in the agricultural districts of Canada. The machinery used is of the most expensive kind, a large porportion of which is manufactured in Ontario and Quebec."

## MECHANICAL DRAFT.

The McEachren Heating & Ventilating Co., Galt, Ont., have sent us their sectional catalogue No. 10, having reference

**MARSH STEAM PUMPS**  
STANDARD FOR ALL DUTIES  
MANUFACTURED BY AMERICAN STEAM PUMP CO.  
BATTLE CREEK MICH.  
FOR DEEP WELLS  
41,000 SOLD IN 12 YEARS  
MAXIMUM STRENGTH, SIMPLICITY AND SERVICE  
WRITE FOR NO. 10 CATALOGUE  
LARGE TANK

Canadian Agents **The A. R. WILLIAMS MACHINERY CO. LIMITED**  
Head Office, — — — — — TORONTO  
Branch Office—MONTREAL

When writing to Advertisers kindly mention THE CANADIAN MANUFACTURER.