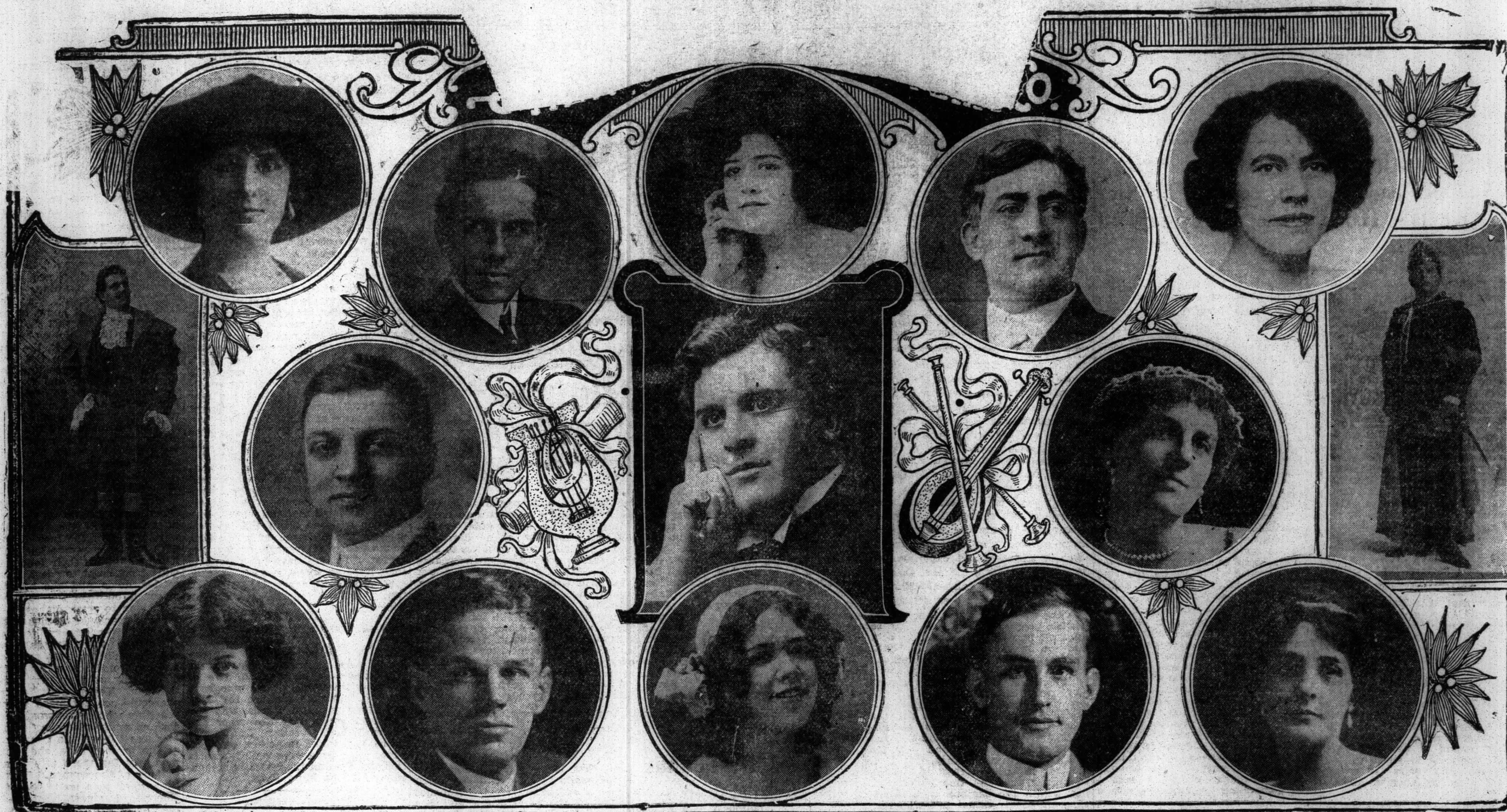


## ARTISTS IN GOUNOD'S FAMOUS MUSICAL OPERA "FAUST" AT THE GRAND



## TORONTO CRITICS ALL AGREE

*Mail and Empire*  
Toronto, May 22, 1917

**Opera Stars Heard in "Faust"**

Gounod's Music Drama opens week at Grand  
... organization's charges unusually low  
for such an offering.

*The Evening Telegram*  
Tuesday, May 22, 1917

**"Faust" Well Sung**

Mr. Sheehan possesses a lyric tenor of robust quality,  
and is an experienced operatic singer.  
Mlle. Nelli Gardini is the possessor of a clear soprano  
which was heard to advantage in Gounod's music. Her  
work was the outstanding feature of last night's presenta-  
tion.

*The Toronto Daily News*  
Tuesday May 22, 1917

Gounod's composition was in capable hands last night  
at the Grand Opera House where the Boston English  
Opera Company is presenting this work. When effec-  
tively handled, as last night, there are few barren mo-  
ments. It is full of charm and sustained in impressive  
power.

*The Toronto World*  
Tuesday May 22, 1917

**"Faust" Finely Sung at Grand Opera House**

Boston English Opera Company gives splendid  
performance of Gounod's famous work.

That **"FAUST"** is The  
Season's Musical Treat

 HAVE YOU SECURED YOUR TICKETS ?

**GRAND OPERA HOUSE Mon. Night, June 4**

SEATS NOW ON SALE  
AT BOLES' DRUG STORE

**Prices: 25c, 50c, 75c, 1.00, \$1.50**

MAIL ORDERS SHOULD  
BE ACCOMPANIED BY  
REMITTANCE.

SIDELIGHT  
STAG

**"MOTHERS OF FRANCE"**  
Scenes filmed in French tr  
views of the ruined remain  
dral and views in French hos  
all these are seen in "Moth  
France." The production is  
drama which comes to the R  
atre on June 11-12-13, with  
Bernhardt as the star. Now  
such a picture being produ  
fore, for never before was it  
secure the combination of  
the greatest actress in a drama  
by one of the world's great  
ors about the greatest war  
world. Madame Bernhardt  
heart and soul into this pic  
did Jean Richepin, the auth  
Louis Mercanton, the produc  
all the members of the cast  
es of rare beauty, scenes of  
pathos, are found in this pro  
The picture throughout has  
produced on a plane of exc  
artistry. From an artistic  
point alone you should not m  
production. And when it is  
that this will probably be  
motion picture in which  
Bernhardt ever appears and  
the historical significance of  
production is realized, then  
be seen that this is an attract  
you cannot afford to miss. "M  
of France" is presented by  
Peerless Film Company. The  
government is a part owner  
big feature.

**"SLEEPING FIRE"**  
Beautiful Pauline Frederic  
star of the Famous Players  
mount production, "Sleeping  
by George Middleton, which  
featured attraction at the Bra  
atre for Monday, Tuesday an  
nesday, the coming week.  
Intensely gripping photoplay  
Frederick is Mrs. Bryce,  
wife and mother, but able to  
the claws of the primitive t  
man when attacked thro  
child.  
Director Hugh Ford, who  
responsible for many of the  
Frederick pictures in the p  
who was the director of  
photoplay, "The Eternal City  
directed this photoplay and  
excellent example of the best  
of these two who have prov  
ability times before.  
A woman whose religion  
her from accepting a divor  
whose intense affection for  
the son, known in the pic  
"The Little Fellow," is the  
Zelma Bryce. Her unprincip  
band, Edward Bryce, is in  
his young secretary, Helen K  
willing to sacrifice all to ma  
They plan to influence Mrs  
through "The Little Fellow"

## Apollo Theat

Friday and Satur

**War at Home**  
Featuring Ethel  
Grandin

2 Reel Comedy Dram

**Shadows of the Ni**  
or **The Gangsters**

4 Reel Feature Dram

**The Girl and th**  
**Butterfly.**

1 Reel Western

**Charlie Chaplin**  
Will be Here

Matinee 2 to 4.30  
Continuous Performance  
Saturday—1 to 11.15

All of  
Lyri

VIC  
REC

Victor  
Opera  
and let

**Brown's**  
9 G