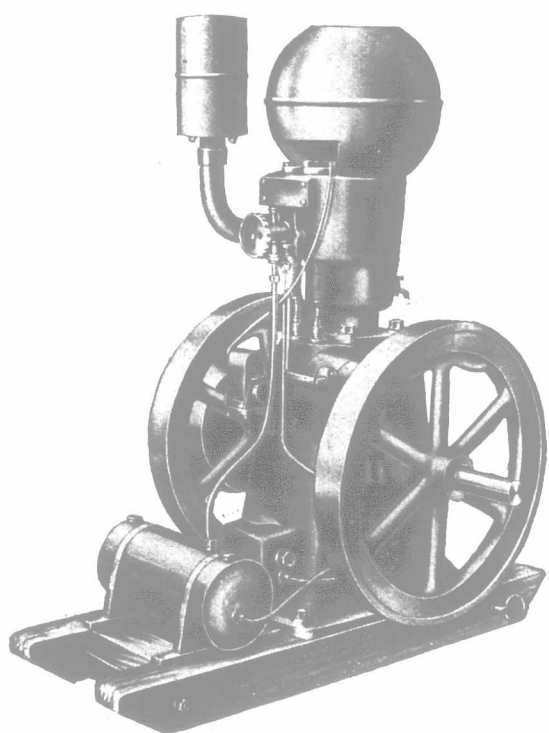


# WHERE THE "LISTER" LEADS

The Value of a Gasoline Engine depends upon the Quality of Materials and Workmanship employed in its construction---



With the "LISTER" Engine you get—

## RELIABILITY

The "Lister" starts instantly, and owing to special automatic lubrication, Bosch Magneto Ignition (no batteries to run down), the very best design, materials and workmanship, runs perfectly with practically no attention.

*10,000 users say so!*

## ECONOMY

Not only does the "Lister" use the minimum of fuel and lubricating oil, but the design and quality of all its working parts are such that the cost of upkeep is very small indeed.

*10,000 users have proved this!*

## SIMPLICITY

Any person of average intelligence can start, work and manage the "Lister." No lamp to adjust, no waiting to start. All parts easily accessible. No danger. No extra insurance.

*10,000 users will tell you this!*

## HENCE ITS WONDERFUL SALE AND POPULARITY

The "LISTER" has time, money and worry-saving features not to be found in any other make. You have only to see the "LISTER" at work and compare it with others to realize its superiority. Write for Catalogue "G," or call on us at Toronto Fair (three stands), where, in addition to "Lister" Engines, we are exhibiting

MELOTTE CREAM SEPARATORS, LISTER LIGHTING AND PUMPING PLANTS, ETC.

**R. A. LISTER & COMPANY Limited,** 58-60 Stewart St. **TORONTO**

Branches at WINNIPEG, MAN., and 82 Water Street, ST. JOHN, N. B.

Works: DURSLEY, ENGLAND

# Massey-Harris Grinders

## SCIENTIFIC DESIGN

Patent Quick-Relief Lever.

Safety Break Pin.

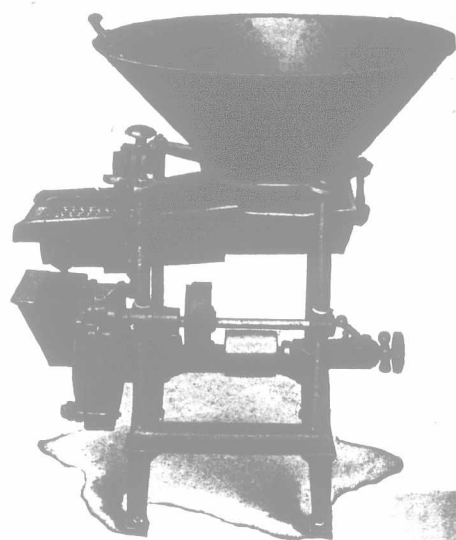
Positive Adjustment for grinding fine or coarse.

## SUBSTANTIAL CONSTRUCTION

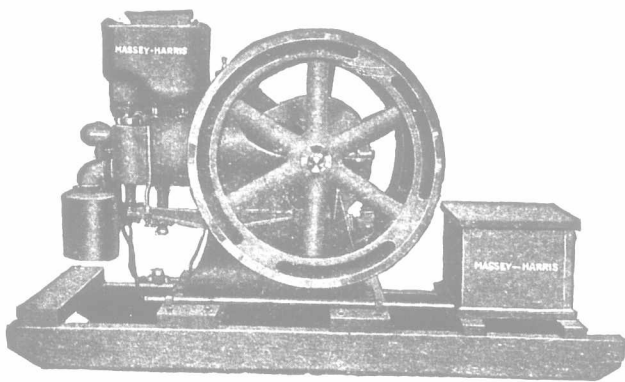
Improved Device for raising and lowering the Feed Spout.

Burrs are especially hard.

Perfectly balanced and Bearings are well babitted, ensuring smooth and easy-running.



FIVE SIZES—6½ to 10½ in. Burrs



# Massey-Harris Gasoline Engines

Famous for Reliability, Efficiency and Economy.

Ready any time. A Simple and Reliable source of Power for Pumping Water, Grinding Feed, Sawing Wood, Operating the Separator, Churn, Feed Cutters, Grindstone, Washing Machine, etc.

## STATIONARY OR PORTABLE

1½ to 20 Horse Power

**MASSEY-HARRIS CO., Limited,** HEAD OFFICES: **Toronto, Canada**

Branches at:

MONTREAL

MONCTON

WINNIPEG

REGINA

SASKATOON

SWIFT CURRENT

CALGARY

YORKTON

EDMONTON

Agencies  
Everywhere

SEE THESE MACHINES AT TORONTO EXHIBITION