

## ANOTHER DAIRY FARMS PRIZE COMPETITION FOR 1911

Farm and Dairy has Completed Plans for This Year's Contest. It will Include all of Older Ontario and Part of Quebec Full Particulars are Here Given

ANOTHER dairy farms prize competition like the one which created so much interest during 1909 and 1910, will be held this year by Farm and Dairy throughout Ontario, and in the district of Beauharnois, Que., as well. Ontario will be divided into four districts, as it was in 1909, and a fifth district will be added for the district of Beauharnois, Que. Ten handsome prizes will be offered in each district. Next year the prize winning farmers in each district will be allowed to compete in a final or semi-final contest to determine the best farms in all five districts.

From this year's competition the leading prize winners in the last contest will be excluded. These include the five prize winners in the provincial contest last year, namely, Messrs. R. A. Penhale, of St. Thomas; J. W. Richardson, of Caledonia; E. Terrill of Wooler; O. D. Bales, of Lansing; and D. Duncan, of the Don. Mr. Victor Begg, of Moose Creek, the first prize winner in the eastern part of Ontario in 1909, will also be excluded from this year's contest. All these parties, however, with the exception only of Mr. Penhale, the first prize winner in the last provincial contest, will be allowed to take part, if they so desire, in the next final contest to decide the final championship. Mr. Penhale, should he so desire, may be given an opportunity next year or the year after to compete against the first prize farms in the province of Quebec for the interprovincial championship.

### THE COMMITTEE OF MANAGEMENT

Arrangements for this year's contest were made at a meeting of the committee of management, that in cooperating with Farm and Dairy in making the contest a success, which was held in the Walker House, Toronto, on Wednesday, March 29. The members of the committee present were: Messrs. H. Glendinning, of Manilla, and G. A. Gillespie, of Peterboro, representing the Eastern Ontario Dairymen's Association; D. A. Dempsey, of Stratford, and S. R. Wallace, of Burgessville, representing the Western Ontario Dairymen's Association; Mr. Simpson Rennie, Ontario's famous gold medal farmer; and H. B. Cowan, of Farm and Dairy. There were also present Mr. O.

D. Bales, of Lansing, and D. Duncan, of the Don, two of the competitors in the last contest. Mr. Glendinning was again elected chairman of the committee, and Mr. Cowan as the secretary.

### QUEBEC INCLUDED

The committee unanimously decided to include the district of Beauharnois, Que., in this year's contest. This includes the counties of Beauharnois, Chateaugay and Huntingdon. This section possibly contains more high class dairy farms, than all the rest of the province combined. The advisability of extending the contest over a larger portion of Quebec was considered. It was felt, however, that the entries would probably be very scattered and the expense of judging so great as to be prohibitive. Should the interest this year warrant it, other sections of Quebec may be included in the next contest. The addition of this portion of Quebec, it was felt, would add interest to the contest in Ontario as it would add an interprovincial interest to the final contest.

### THE PRIZES

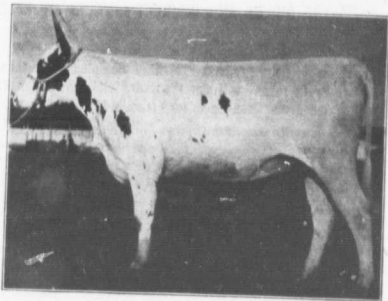
In 1909, 15 prizes were offered in each of the four districts in Ontario. In none of the districts were there over 11 entries. It was decided, therefore, to offer only 10 prizes in each district but to endeavor to give better prizes.

It was further decided that the farms should be judged once during the coming summer by two judges in each district. Where the judges find that the competition for the leading prizes is close between certain farms they will have the privilege of judging these farms again next winter before making their final decision. The appointment of the judges was left in the hands of the chairman and the secretary.

### THE RULES

Several hours were spent in considering the rules and scale of points. All the rules governing

the old contest were re-adopted without amendment. All the competitors in last year's contest had been written to and asked to suggest any changes they would like to see made in the scale of points. Only three competitors replied, and the changes they suggested were of a minor character. Messrs. Glendinning and Duncan, who had been competitors, were agreed that the scale of points needed but little change. A few slight changes were made, the total number of



The Daughter of a Champion Sire

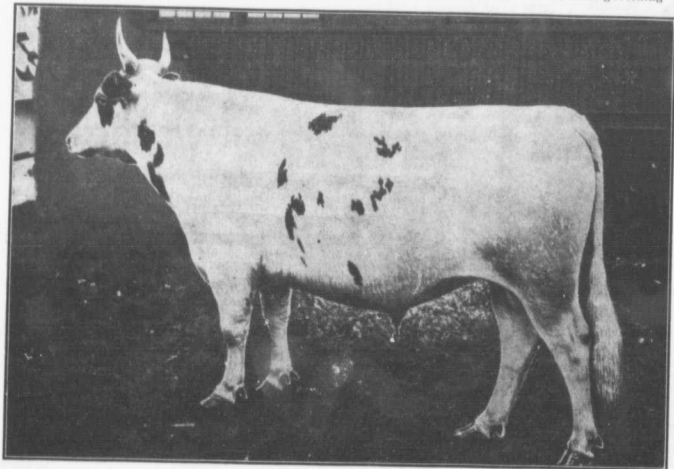
Cherry Bank Milkmaid, here shown, was the female champion of Sherbrooke; also junior champion and reserve grand champion at Dominion exhibition, St. John, N.B., 1910. She is owned by E. D. Milkman, North Georgetown, Que., and is a daughter of Netherhall Milkman.

points offered being increased from 1000 to 1060.

The rules governing this year's contest and the scale of points as amended are as follows:

1. Farms must contain at least 90 acres. The whole farm must be entered. Swamp, stony or poor land cannot be left out but the judges will have power to leave it out if in the use of their discretion they so decide.
2. Farmers with 90 acres of land must have ten cows, 200 acres of land, 15 cows; 300 acres of land, 25 cows; and over 300 acres, 25 cows. The competitors must be sending the milk or cream of that number of cows at least, to a cheese factory or creamery, or to the city, or making it into butter or cheese.
3. Only practical farmers will be allowed to compete. If necessary, competitors will be required to furnish proof that their chief occupation is farming, and that they have been engaged in farming principally, for at least five years previous to the competition.
4. To assist in defraying the expense of the competition there will be an entry fee of \$3.00. When intending competitors are members of either the Eastern or Western Ontario Dairymen's Association, the entry fee will be only \$2.00. Membership in these Associations costs \$1.00.
5. Entries must be sent to H. B. Cowan, Farm and Dairy, Peterboro, Ont., with the entry fees, on or before June 15th, 1911.
6. Successful competitors will be required, when asked to do so by the judges, to furnish essays on any three features of their farm work that may be called for. These, however, will not be counted in the awarding of prizes.
7. The committee of management reserves the right to refuse the entry or entries of farms, the acceptance of which it may deem would be unfair, owing to special conditions, to other competitors. These rules may be extended or amended if the committee deems such action to be in the best interests of the competition.

(Continued on page 8)



Netherhall Milkman—A Champion Ayrshire Bull

This bull, which heads the Ayrshire herd at the Cherry Bank Stock Farm, owned by P. D. McArthur, North Georgetown, Que., was the champion Ayrshire bull at Sherbrooke and at the Dominion exhibition, St. John, N.B., 1910. The two animals on this page afford a fine study in Ayrshire breed type.

Pure-Bred  
C. F. White  
One chief  
fiable cows  
it has been



C. F. White

He may in  
farm, but h  
skilful work  
been seeking  
orous, profit  
teristics.

What excu  
use of a po  
farmer reas  
his herd fro  
surely count  
ity and perf  
diminishing

What do  
through th  
district no f  
46 informed  
pure bred da  
points to the  
associations  
Members of  
20 men who  
ment, could  
three good s  
willing to ser  
could be divi  
kept two ye  
next group o  
years; thus o  
of the use o  
1,000

How will t  
able expectat  
on fairly goo  
pounds of m  
Dairy Commi  
of two year  
Columbia we  
nine out of

