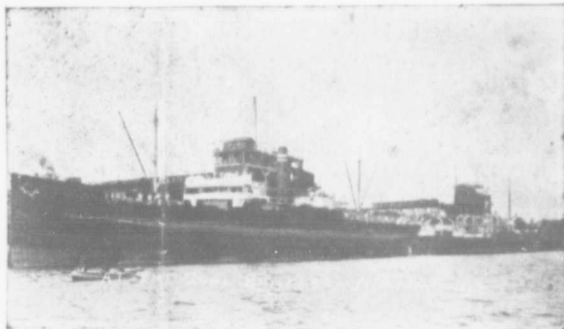


## AS A LOCATION FOR INDUSTRIES

THE central location of Nanaimo, from which every part of the Island can be reached so easily, makes it a most desirable point for the establishment of all kinds of factories and warehouses for the distribution of supplies. Manufacturers and wholesale men who are looking for a place to establish themselves on the British Columbia Pacific Coast will find Nanaimo a most desirable place and with every facility both for receiving their raw material and for distributing their finished goods. Nanaimo enjoys the same terminal rates as Vancouver and Victoria, giving a deferential at least of \$4 per ton. Fuel is very cheap both wood and coal being produced in immense quantities and being shipped to



OCEAN LINERS TAKING ON COAL

all parts of the world. A splendid water supply system is owned by the city and water is supplied to manufacturers at very low rates. A new brick plant is being installed by the Red Cliff Brick & Tile Co., Ltd. with a capital of \$150,000.



TEN ACRES OF LAND INTELLIGENTLY HANDLED WILL SUPPORT THE FAMILY

