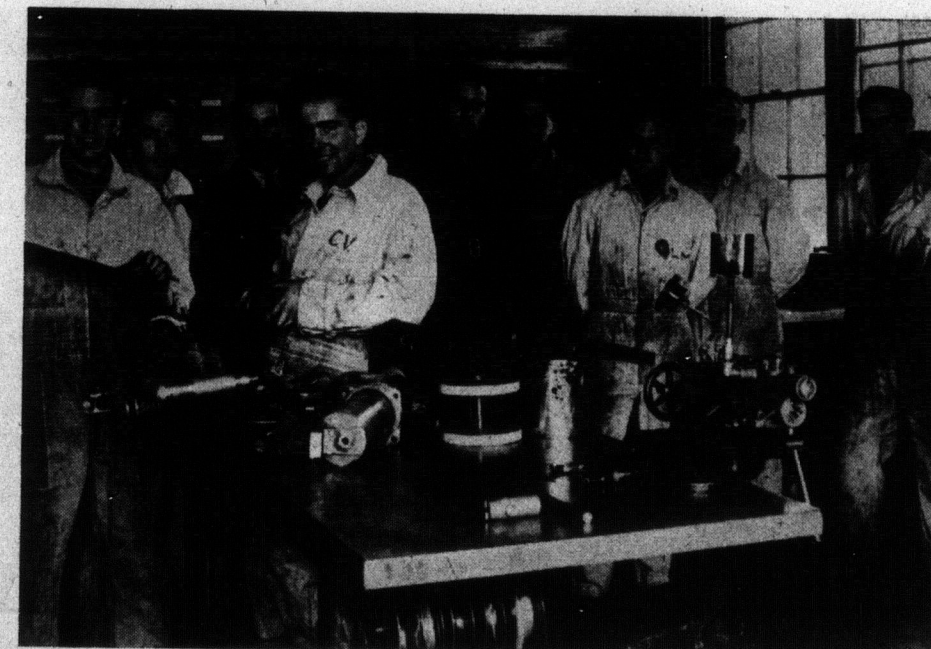
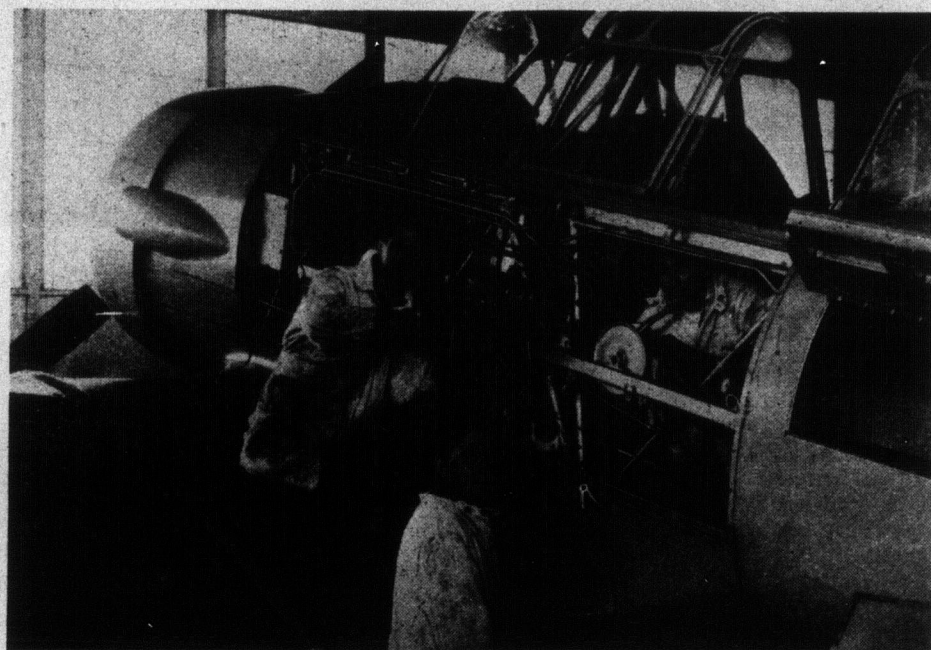




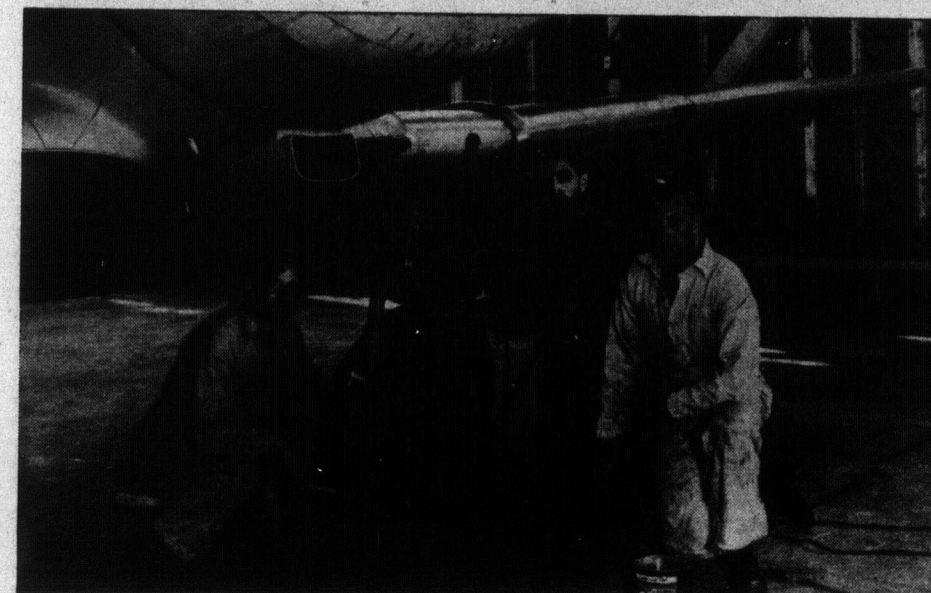
(Electrical Section)  
LAC SNACHE, J. A.



Left to right—  
LAC WILSON, D. M.  
LAC HAWKINS, S. R.  
CPL. LEGARE, E. J.  
LAC VIVAN, C. A.  
F/SGT. BAINBRIDGE, H.  
(N.C.O. in Charge)  
AC STROM, W. B.  
LAC MASON, L. R.  
LAC DUNN, R. A.  
LAC MORGAN, J. E.  
(Component Section)



Left to right—  
LAC HURDLE, J. D.  
AC HOOVER, R. S.  
LAC MASON, J. E.  
(Day Maintenance)



Left to right—  
LAC POAPS, D.  
LAC MONTEMURRO, S.  
LAC WELDON, H. W.  
(Day Maintenance)



REFUELING AT  
"C" FLIGHT



LAC DAVIDSON, C. L.  
CPL. HUDGIN, L. G.  
(Metal Repair Shop)