



FIGURE NO. 430 T.—LADIES' TOILETTE.—This consists of Ladies' Basque No. 4432 (copyright), price 1s. 3d. or 37 cents; and Skirt No. 4436 (copyright), price 1s. 6d. or 35 cents.

(For Description see Page 318.)

five rows, the cuffs provided by the pattern being in this case omitted. The small hat is tastefully adorned with Spring flowers and a butterfly bow of ribbon.

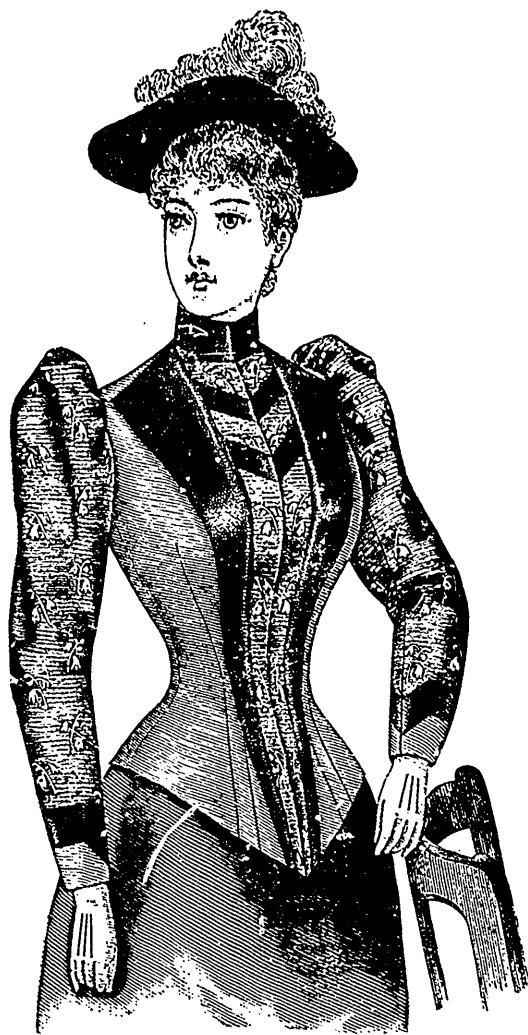


FIGURE NO. 431 T.—LADIES' BASQUE.—This illustrates Pattern No. 4432 (copyright), price 1s. 3d. or 30 cents.
(For Description see Page 319.)

At figure No. 423 T the toilette is represented charmingly developed in pearl-gray broadcloth. The skirt is of the fashionable bell variety and has a narrow front-gore, and two wide gores that extend to the center of the back, where their bias back edges are joined in a center seam. At the back is arranged a broad, double box-plait that widens gradually to the edge of the pointed train, with Watteau effect. The skirt is made over a foundation skirt, which consists of five bell-gores and has a slight train. If the train be not admired, the skirt and foundation may be shortened to round length, the pattern indicating the proper shaping for both styles.

The basque extends to the fashionable three-quarter depth, and its dart-fitted fronts are widened to close diagonally at the left side with button-holes and buttons. The edges of the fronts flare below the closing to reveal a vest which shapes a sharp point at the lower edge; and the fronts are cut out above the bust and finished with broad revers that meet the rolling collar in notches. The vest is closed invisibly at the center and is finished at the top with a stylish high standing collar. The superb adjustment is completed by the usual number of gores, and a curving center seam that terminates a little below the waist-line. The shapely coat-sleeves rise prominently above the shoulders, and the wrists are finished with pointed cuffs, the loose back edges of which flare widely. The front and lower edges of the basque are decorated with curled-silk feather trimming, and similar trimming covers the side-front seams of the skirt and is continued along the lower edge of the skirt. The front-gore is ornamented at the bottom with three bands of braid passementerie, and the revers, collars and cuffs and the exposed portions of the vests are covered with a set of similar passementerie. All the garniture