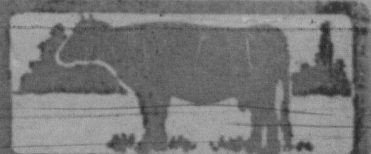


The Farm Page



HALLATT-RODGERS, LTD.

10039 JASPER AVENUE
have a

3 Days' Sale

Begins Thursday, November 27th
Ends Saturday, November 29th

\$12.00 AND \$15.00 LADIES' BOOTS. SALE PRICE	\$9.75
MEN'S \$12.00, \$13.00 AND \$14.00 WELTED BOOTS	\$9.85
LADIES' SILK STOCKINGS, REGULAR \$2.00; HALF-PRICE THESE THREE DAYS	\$1.00
BALANCE OF THOSE \$5.00 LADIES' BUTTON BOOTS ON SALE FOR	\$1.95

You will have to come quick if you want some of these.

HALLATT-RODGERS, Ltd.

10039 JASPER AVENUE
Opposite Howard and Bank of Toronto

NOTICE

IMPERIAL OIL, LIMITED wishes to
advise its patrons that it has installed an
up-to-date Private Telephone Exchange.

Effective Tuesday morning, November
25th.

Day Calls	9361
After Hours and Holidays—	
Sales and Shipping	9361
Manager and Assistant Manager	9362
Accounting Department	9363
No. 2 Warehouse	9364
No. 1 Warehouse and Filling Station	9365

ACME CLOTHIERS LIMITED

MEN'S OUTFITTERS
TWO STORES:

10146 101st Street. Phone 4833
Cor. Peace and 101st. Phone 1977

Suits & Overcoats

at
\$25, \$30, \$35, \$40, \$45
Satisfaction Guaranteed

In Memoriam Cards

Beautiful Designs
Dredge & Crossland Limited
10128 100th Street Printers

If YOU Are

undecided how to get rid of your
Household Furnishings, etc., phone us
and our buyer will call and advise you
the best means of realizing the highest
price for your furniture, etc.

L. PODERSKY, Auctioneer
Opposite Macdonald Hotel
Phone 4755

VOTE FOR

RICE SHEPPARD

who stands for

Clean, Economic
and Efficient
Government

BLUE MOON DINING ROOM

ALL HOME COOKING

Try Our Business Lunch
Popular Prices, 35c and 40c



TRANSFER ORDER BY TELEPHONE

You are assured the very
same careful service as
though you came here in
person

"THE PUBLIC BE PLEASED"

is our Slogan

Motor Express Transfer

Kellough-Cherry Truck Co.

Phone 2199 10150 99th St.

Taxi Service in Connection

FURNITURE MOVING A
SPECIALTY

Advertise in The Edmonton Free Press



SAVE YOUR EYES

by getting
YOUR GLASSES

from

IRVING KLINE

OPTOMETRIST & OPTICIAN

10035 Jasper Phone 5284

Where poor eyes and good glasses meet

EXPERIMENTS IN CONSERVATION OF SOIL MOISTURE.

Prof. G. H. Cutler of U. of A.
Makes Interesting Experiments
To Guard Against Drouth.

Owing to the drought prevailing over
large areas of Western Canada during
the past season, the results of experi-
ments conducted under the direction of
Prof. G. H. Cutler, professor of Field
Husbandry, in the College of Agricul-
ture, in the University of Alberta, are
of special interest. It has long been
known that from 200 to 1,000 pounds of
moisture are required to produce one
pound of dry matter in plants, the vari-
ation depending upon the variety of
the plant concerned. The tillage experi-
ments referred to have been conducted
for the purpose of determining what is
the best method of guarding against in-
jurious effects of drought. Two experi-
ments were carried on, one on corn land
and one on fall ploughed stubble, wheat,
oats, barley and peas being sown. The
corn land showed increased returns over
the fall ploughed stubble as follows:

In wheat, 20 bus. and 32 lbs. per acre.

In oats, 56 bus. per acre.

In barley, 32 bus. and 26 lbs. per acre.

In peas, 37 bus. and 52 lbs. per acre.

The conclusion is that the best guar-
antee against drought is tillage to con-
serve moisture in the soil during the
season preceding that in which the par-
ticular crop is grown, by summer fall-
ow or the cultivation of some hoed
crop, such as corn or potatoes.

RHUBARB CAN BE FORCED EASILY DURING WINTER

Rhubarb Will Be Ready For Use
In January and Continue for
Two Months.

Rhubarb can be forced very easily
during the winter. As the crowns or
plants from which the stalks are to be
forced have received the necessary
nourishment during the season just past,
it is not necessary to plant them in soil
when being forced, although soil may
be found the most convenient material
in which to put the plants, as the roots
must be kept moist for best results.

The plants are dug just before winter
sets in, and before being put in the cel-
lar they are left on the surface of the
ground and allowed to freeze solid. An
exposure to frost for from ten days to
two weeks is desirable, as they after-
ward force more quickly. The plants
are now put close together in the cellar
for forcing either in soil in boxes or on
the floor of the cellar. They may remain
in total darkness while being forced,
yet the forced rhubarb will be of a very
attractive shade of red and not light in
color as might be supposed.

The best temperature for forcing is
between 50 degrees and 60 degrees F.,
though rhubarb will force at even lower
temperatures.

The rhubarb will be ready for use
either early or late in January, depend-
ing on the temperature of the cellar,
and will keep throwing up fresh stalks
until the roots are exhausted, which
will not be for two months or more. A
few good sized crowns cut off the plants
in the garden will furnish enough stalks
for family needs.—W. T. Macoun, Do-
minion Horticulturist.

BRITISH COLUMBIA LUMBER INDUSTRY SHOWS INCREASE

The log scale for August, indicates
another record for the logging industry
of British Columbia, when the total
reached over 200,000,000 board feet.

While it is anticipated that the re-
maining months of the year will show
decline from this record figure, never-
theless it is expected that the log scale
will show an increase over the corre-
sponding months of the previous year
and that the industry will show a log-
ging output of between 1,850,000,000
and 1,900,000,000 board feet. This will
be in contrast to 1,761,000,000 feet in
1918 and 1,647,000,000 feet in 1917.
When it is taken into consideration that
logs are now bringing from 25 per cent.
to 4 per cent. more than last year,
values involved in the industry this
year will be appreciated. Notwithstand-
ing the comparatively poor results of
the crops on the prairies and the slack-
ening seasonal demand the lumber in-
dustry is yet a remarkable state of ac-
tivity, and in the general consensus of
opinion, will remain so as long as phy-
sical conditions will permit.—B. C. Fi-
nancial Times.

Growing on the Manitoba Agricul-
tural College grounds are a number of
selected native seedling plum trees.
These trees were in full bearing this
year, and their crop has demonstrated
very clearly that plums of good size
and quality can be grown in Manitoba.
From 50 to 100 pounds of fruit have
been taken from each tree.

Sometimes it is hard to tell a large
strike from a small war.

BEVERLY TAX SALE

900 Clear Title Lots

Will be Sold by Auction to the Highest Bidder
on

SATURDAY, NOVEMBER 29th

At The Town Hall, Beverly

Sale Commences at 10 o'clock.

Absolutely No Reserve

These lots have been forfeited to the town of Beverly
for arrears of taxes and the redemption period has
expired. No waiting for title. When you buy, the prop-
erty is yours absolutely and you will receive transfer
as soon after the sale as possible. This is a splendid oppor-
tunity for you to buy several lots at a cost far below the
original selling price of one. You never had a better
chance to make money. Buy a homesite in Beverly and
escape the high rent and taxes in the city. This town's
mill rate is one of the lowest in the whole province. Be
out early Saturday, November 29th. Sale commences at
10 o'clock a.m. and autos will meet the Highland cars up
to 5 p.m. Any further information can be obtained from
the Secretary-Treasurer at Beverly or at Reed & Robin-
son, Auctioneers, Jasper Avenue, Edmonton, where maps
and full list of all lots to be sold may be seen.

ERNEST W. DUNN

Secretary-Treasurer, Town of Beverly.