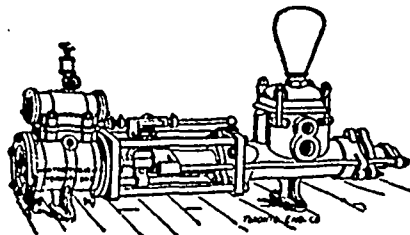


**Saw Mill Machinery,  
Northey's Steam Pumps,  
Grain Choppers,**

## Waterous Engine Works Co.,

WINNIPEG, MAN.

**Engines and Boilers,  
Saw Mills.**



## PORTER & CO.,

DIRECT IMPORTERS OF

# Crockery.

GLASSWARE, CHINA,

Silverware, Cutlery, Lamps,  
Fancy Goods, Etc.

330 Main St., Winnipeg

Established 1860.

Incorporated 1895.

## "Crescent"

### Steel Enamelled Ware

Tinware of every Description  
Manufactured by

**The Thos. Davidson Mfg. Co. Ltd.**

MONTREAL

Merrick, Anderson & Co. Agents,  
Winnipeg.

## STUART & HARPER

AGENTS FOR

Stratford Mill Building Co.

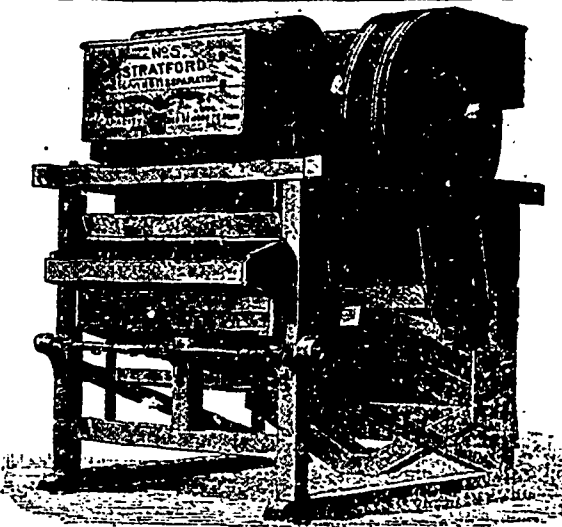
Flour Mill and Elevator Machinery

Dustless Warehouse and Elevator  
Separators

Dodge Wood Pulleys

New and Second-hand Machinery  
of all kinds.

758 to 764 Main Street,  
Winnipeg.



# Cigars

Made in your own Country.

...

HISPANIA, RED CROSS, KHEWEE

Try these Brands. They are Unsurpassed.

BRYAN & LEE, Winnipeg.

Andrew Allan, President. John McKechnie, Sept.  
F. H. Brydges, Vice-President. W. R. Allan, Sec.-Treas.

## THE VULCAN IRON COMPANY,

OF MANITOBA LIMITED.

MILL ROLLS GROUND & CORRUGATED.  
Architectural Iron Work.

## ENGINE AND BOILER WORKS,

GENERAL BLACKSMITHING.

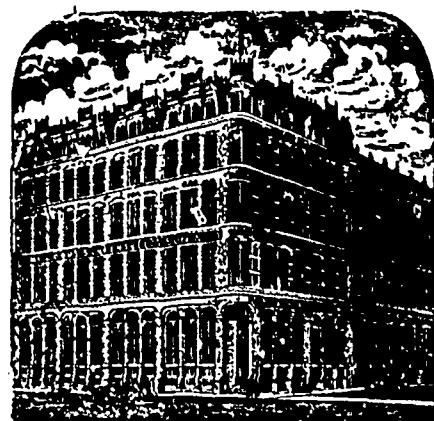
BRIDGE BUILDING A SPECIALTY.

TENDERS SOLICITED.

POINT DOUGLAS AVE., WINNIPEG.

## S. Greenshields Son & Co.

MONTREAL AND VANCOUVER, B.C.



We are offering for Spring Delivery the  
following special lines:

Crums' Prints. Tokio Pongees.

Priestley's Waterwitch Serges, Cravenettes,  
Coutilles, Lustres & other Mohair Effects.

Harrison's Brussel's Carpets.

Also a very large range of COTTON GOODS

Samples with C. J. REDMOND, Room 18,  
McIntyre Block, Winnipeg.

## McMASTER & CO.

—WHOLESALE—

## WOOLENS, TAILOR'S TRIMMINGS

CARPETS

AND GENERAL DRY GOODS,

Represented by

J. J. THORLEY TORONTO, ONT.

## JAS. McCREADY & CO.,

WHOLESALE

## Boot and Shoe Manufacturers,

MONTREAL.

W. WILLIAMS, AGENT.

SAMPLE ROOM—Room M, McIntyre Block,  
MAIN STREET, WINNIPEG.

## M. and L. Samuel Benjamin & Co.,

26, 28, 30 FRONT STREET, WEST.  
TORONTO

\* Shelf and Heavy Hardware,

\* Metals, Tin Plate, etc.

\* Lamp Goods and Gas Fixtures.

Plumbers and Steam Fitters' Supplies

Special attention given to Import  
and export trade.

English House: Samuel Sons & Benjamin  
161 Fenchurch St., London, E.C.