

St. Andrew's College

TORONTO

A Residential and Day School for Boys

NEW BUILDINGS NOW BEING ERECTED

The College authorities have purchased 23 acres in Rosedale, where new buildings are now in course of erection. They comprise an Upper and Lower School and will accommodate 300 boys.

Re-Opens After

Xmas on

January 10, 1905

The success of the College has continued. There are now 250 pupils in attendance.

Nine masters in addition to the Principal in Residence.

Boys prepared for the Universities and Royal Military College.

Upper and Lower Schools. Junior Residence.

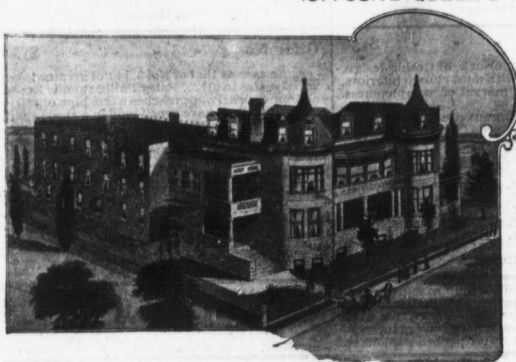
Write for Calendar.

REV. D. BRUCE MACDONALD, M.A., Principal

Toronto Presbyterian Ladies' College

(OPPOSITE QUEEN'S PARK)

LIMITED



**BLOOR ST. WEST
TORONTO**

**A HIGH-CLASS
RESIDENTIAL AND
DAY SCHOOL**

A thorough training in all work for the Universities and for examinations in Music and Art. Affiliated with the Toronto Conservatory of Music. A Primary Department for junior pupils. Teachers of character and experience in every department.

FOR CALENDAR AND OTHER INFORMATION, WRITE
REV. A. R. GREGORY, B.A.,

PRINCIPAL

MRS. A. R. GREGORY,

LADY PRINCIPAL

Please mention THE TEACHERS MONTHLY when writing to advertisers