



For Your Christmas Shopping

We have an immense stock of Christmas Goods, and our prices are as low as possible, quality considered. We have been manufacturing and importing goods for months past, and have had the stocks of the leading factories in the United States and Europe to make selections from, therefore we are in a position to place before the public an immense range of Jewelry, Cut Glass, Clocks, Umbrellas, Leather Goods, etc.

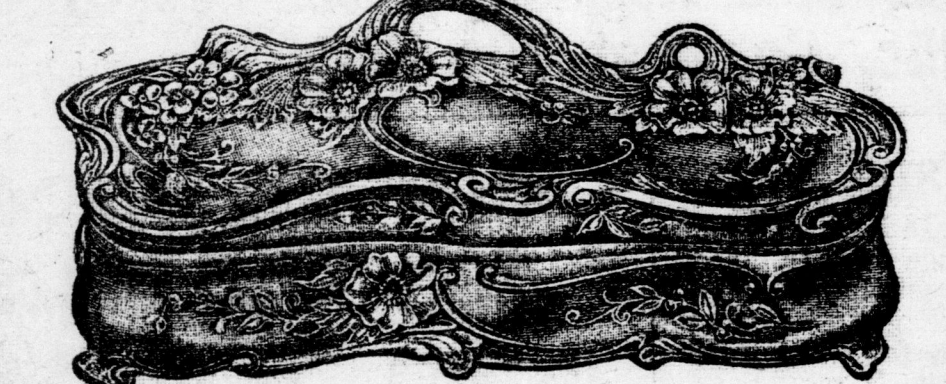
Clocks

We have an immense stock of these, and they are certainly worthy of your inspection. Prices range from

\$3.50 to \$12

Fully guaranteed.

MESH PURSES—We have a large and varied stock of these, also the new Unbreakable Link, from... **\$1.00 UP**
BEAD PURSES, in beautiful designs, great values... **\$1.50 UP**
LEATHER BAGS—The old standby; never out of fashion, from... **\$1.50 UP**
FOBS—This year our stock of these surpasses all others. They are a credit to the jewelry trade. Prices range from **.25¢ UP**



JEWEL BOXES—Ormolu gold, beautiful finish inside and out. Truly a work of art. Call and see them. Prices within everyone's reach. From... **.35¢ UP**

FOUNTAIN PENS.
 Self-filling... **.50¢** Flash, self-filling, 14k nib... **\$2.00**
 Self-filling... **\$1.00** Flash, with gold bands... **\$3.50**

These are only a few suggestions, but if you will favor us with a call we will be very pleased to make further suggestions without urging you to buy.

REMEMBER! Our prices are too low to stand discounts, and they are always the same, never higher—never lower—but always rock-bottom. We find the public approve of steady prices. We guarantee satisfaction, engrave free, and place articles in dainty boxes of value in accordance with your purchase.

384 RICHMOND STREET

WRAVY'S

234 DUNDAS STREET

Wholesale, Retail and Manufacturing Jewelers.

For Other Markets See Page 9

PRODUCE.

LIVERPOOL, Dec. 5.—Close.—Wheat—Spot steady, No. 1 Manitoba, 74 1/2, No. 2, 74 1/2, No. 3, 74 1/2; futures easier; December, 74 3/4; May, 74 3/4; March, 74 3/4. Corn—Spot steady. American mixed, old, 64 1/2; futures firm; December, 64 1/2; January, 64 1/2; March, 64 1/2. Flour—Winter patents, 28 1/2. Hops (in London) 24 1/2 to 25 1/2. Hams—Short cut, 14 to 15 lbs, 6 1/2; clear bellies, 14 to 15 lbs, 6 1/2; long clear middles, light, 28 to 34 lbs, 7 1/2; do, heavy, 35 to 40 lbs, 6 1/2; short clear backs, 16 to 20 lbs, 6 1/2; shoulders, square, 11 to 13 lbs, 6 1/2. Lard—Prime western, in tierces, 5 1/2; do, American refined, in pots, 5 1/2. Cheese—Canadian finest white, 62 1/2; do, colored, 62 1/2. Tallow—Prime city, 32 1/2; Australian (in London), 28 1/2. Turpentine—Spirits—28 1/2. Rosin—Common, 15 1/2. Petroleum—Refined, 9 1/2. Lard oil—30 1/2. Cottonseed oil (Hull refined)—Spot, 26 1/2.

CHICAGO BOARD OF TRADE.

CHICAGO, Dec. 5.—Close.
 Wheat—Open. High. Low. Close.
 Dec. 84 1/2 84 1/2 84 1/2 84 1/2
 May 91 1/2 91 1/2 91 1/2 91 1/2
 Corn—Open. High. Low. Close.
 Dec. 48 1/2 48 1/2 48 1/2 48 1/2
 May 48 1/2 48 1/2 48 1/2 48 1/2
 Oats—Open. High. Low. Close.
 Dec. 32 1/2 32 1/2 32 1/2 32 1/2
 May 32 1/2 32 1/2 32 1/2 32 1/2
 Pork—Open. High. Low. Close.
 Jan. 19 1/2 19 1/2 19 1/2 19 1/2
 Lard—Open. High. Low. Close.
 Jan. 10 1/2 10 1/2 10 1/2 10 1/2
 Rib—Open. High. Low. Close.
 Jan. 19 1/2 19 1/2 19 1/2 19 1/2
 Cattle—Open. High. Low. Close.
 Dec. 10 1/2 10 1/2 10 1/2 10 1/2
 Hogs—Open. High. Low. Close.
 Dec. 10 1/2 10 1/2 10 1/2 10 1/2
 Sheep—Open. High. Low. Close.
 Dec. 10 1/2 10 1/2 10 1/2 10 1/2

WINNIPEG, Dec. 5.—Close.—Wheat—

December, 80 1/2; May, 94 1/2.

MINNEAPOLIS, Dec. 5.—Close.—

Wheat—December, 81 1/2.

COTTON.

NEW YORK, Dec. 5.—Cotton prices up to 2:30 p.m.; December, 12 1/2; May, 12 1/2.

EDWARD CRONIN & CO.

Members Toronto Stock Exchange. Information on all investments gladly furnished.

Telephone: Main 1111, Adelaide 2222. 60 BAY STREET, TORONTO.

TORONTO STOCK EXCHANGE.

[Special to The Advertiser.]

TORONTO, Dec. 5.

Brazilian T. L. & P. 91 1/2

B. C. Packers, A. 150

B. C. Packers, com. 145

Bell Telephone, com. 151

F. N. Burt, com. 100 1/2

Canada Bread, com. 105

Canada Cement, com. 93 1/2

Canadian General Electric, 116 1/2

Canadian Locomotive, com. 64

Canadian Locomotive, pd. 54

Canadian Pacific Railway, 264

Canadian Salt, 112 1/2

City Dairy, com. 100 1/2

Consumers' Gas, 193

Crow's Nest Pass, com. 82

Detroit United, 75

Domestic Cannery, com. 100 1/2

Domestic Steel, pd. 102

Domestic Steel Corporation, 60 1/2

Domestic Telegraph, 109

Duluth-Superior Traction, 70 1/2

Elec. Development, pd. 85

Illinois Traction, pd. 134

Lake of the Woods, pd. 120

Lake Superior Corporation, 31

Mackay, com. 83 1/2

Mackay, pd. 68

Maple Leaf, com. 69 1/2

Mexican Light & Power, 83 1/2

Mexico Traction, com. 112

Monarch, com. 72 1/2

Monarch, pd. 83

N. S. Steel, com. 89

Ogilvie Milling, com. 124

Tretheway, 25 1/2

Bank of Commerce, 25 1/2

Bank of Hamilton, 204

Bank of Montreal, 221

Bank of Nova Scotia, 200

Bank of Toronto, 205

Bank of Western, 205

Bank of Victoria, 205

Bank of Vancouver, 205

Bank of Winnipeg, 205

Bank of Montreal, 205

Bank of Nova Scotia, 205

Bank of Toronto, 205

Bank of Western, 205

Bank of Victoria, 205

Bank of Vancouver, 205

Bank of Winnipeg, 205

Bank of Montreal, 205

Bank of Nova Scotia, 205

Bank of Toronto, 205

Bank of Western, 205

Bank of Victoria, 205

Bank of Vancouver, 205

Bank of Winnipeg, 205

Bank of Montreal, 205

Bank of Nova Scotia, 205

Bank of Toronto, 205

Bank of Western, 205

Bank of Victoria, 205

Bank of Vancouver, 205

Bank of Winnipeg, 205

Bank of Montreal, 205

Bank of Nova Scotia, 205

Bank of Toronto, 205

Bank of Western, 205

Bank of Victoria, 205

Bank of Vancouver, 205

NEW YORK STOCK EXCHANGE.

[Special to The Advertiser.]

NEW YORK, Dec. 5.

Amal. Copper, 97 1/2

American Sugar, 117 1/2

American Tobacco, 49 1/2

American Locomotive, 42 1/2

American Foundry, 56 1/2

American Refining, 56 1/2

American Cotton, 56

Atchafalpa, 106 1/2

Atchafalpa, 106 1/2

Atchafalpa, 106 1/2

Atchafalpa, 106 1/2

Atchafalpa, 106 1/2

Atchafalpa, 106 1/2

Atchafalpa, 106 1/2

Atchafalpa, 106 1/2

Atchafalpa, 106 1/2

Atchafalpa, 106 1/2

Atchafalpa, 106 1/2

Atchafalpa, 106 1/2

Atchafalpa, 106 1/2

Atchafalpa, 106 1/2

Atchafalpa, 106 1/2

Atchafalpa, 106 1/2

Atchafalpa, 106 1/2

Atchafalpa, 106 1/2

Atchafalpa, 106 1/2

Atchafalpa, 106 1/2

Atchafalpa, 106 1/2

Atchafalpa, 106 1/2

Atchafalpa, 106 1/2

Atchafalpa, 106 1/2

Atchafalpa, 106 1/2

Atchafalpa, 106 1/2

Atchafalpa, 106 1/2

EAST ENDERS KEEN FOR ANNEXATION

Tax Bills, Greatly Increased, Are Beginning to Arrive.

Residents of the newly-annexed districts of Knollwood Park, London Junction and Ealing, are especially

pleased that the merging of the suburbs has been consummated, since

the tax bills of the township of London were received today. It is said

that because of the increase in assessment the taxes of many of the property-owners have been raised from 30

to 40 per cent., and in one particular case the tax bill is increased from 12

to 17 1/2 per cent. The Advertiser is informed that

the tax bills of the township of London were received today. It is said

that because of the increase in assessment the taxes of many of the property-owners have been raised from 30

to 40 per cent., and in one particular case the tax bill is increased from 12

to 17 1/2 per cent. The Advertiser is informed that

the tax bills of the township of London were received today. It is said

that because of the increase in assessment the taxes of many of the property-owners have been raised from 30

to 40 per cent., and in one particular case the tax bill is increased from 12

to 17 1/2 per cent. The Advertiser is informed that

the tax bills of the township of London were received today. It is said

that because of the increase in assessment the taxes of many of the property-owners have been raised from 30

to 40 per cent., and in one particular case the tax bill is increased from 12

to 17 1/2 per cent. The Advertiser is informed that

the tax bills of the township of London were received today. It is said

that because of the increase in assessment the taxes of many of the property-owners have been raised from 30

to 40 per cent., and in one particular case the tax bill is increased from 12

to 17 1/2 per cent. The Advertiser is informed that

the tax bills of the township of London were received today. It is said

that because of the increase in assessment the taxes of many of the property-owners have been raised from 30

to 40 per cent., and in one particular case the tax bill is increased from 12

to 17 1/2 per cent. The Advertiser is informed that

the tax bills of the township of London were received today. It is said

that because of the increase in assessment the taxes of many of the property-owners have been raised from 30

to 40 per cent., and in one particular case the tax bill is increased from 12

to 17 1/2 per cent. The Advertiser is informed that

the tax bills of the township of London were received today. It is said

that because of the increase in assessment the taxes of many of the property-owners have been raised from 30

to 40 per cent., and in one particular case the tax bill is increased from 12

to 17 1/2 per cent. The Advertiser is informed that

the tax bills of the township of London were received today. It is said

Too Late to Classify

HOUSE TO LET—DINING-ROOM, PARLOR, four bedrooms and kitchen, gas and water in house. Apply 473 York street.

HOUSING TO LET—DINING-ROOM, PARLOR, four bedrooms and kitchen, gas and water in house. Apply 473 York street.

HOUSING TO LET—DINING-ROOM, PARLOR, four bedrooms and kitchen, gas and water in house. Apply 473 York street.

HOUSING TO LET—DINING-ROOM, PARLOR, four bedrooms and kitchen, gas and water in house. Apply 473 York street.

HOUSING TO LET—DINING-ROOM, PARLOR, four bedrooms and kitchen, gas and water in house. Apply 473 York street.

HOUSING TO LET—DINING-ROOM, PARLOR, four bedrooms and kitchen, gas and water in house. Apply 473 York street.

HOUSING TO LET—DINING-ROOM, PARLOR, four bedrooms and kitchen, gas and water in house. Apply 473 York street.

HOUSING TO LET—DINING-ROOM, PARLOR, four bedrooms and kitchen, gas and water in house. Apply 473 York street.

HOUSING TO LET—DINING-ROOM, PARLOR, four bedrooms and kitchen, gas and water in house. Apply 473 York street.

HOUSING TO LET—DINING-ROOM, PARLOR, four bedrooms and kitchen, gas and water in house. Apply 473 York street.

HOUSING TO LET—DINING-ROOM, PARLOR, four bedrooms and kitchen, gas and water in house. Apply 473 York street.

HOUSING TO LET—DINING-ROOM, PARLOR, four bedrooms and kitchen, gas and water in house. Apply 473 York street.

HOUSING TO LET—DINING-ROOM, PARLOR, four bedrooms and kitchen, gas and water in house. Apply 473 York street.

HOUSING TO LET—DINING-ROOM, PARLOR, four bedrooms and kitchen, gas and water in house. Apply 473 York street.

HOUSING TO LET—DINING-ROOM, PARLOR, four bedrooms and kitchen, gas and water in house. Apply 473 York street.

HOUSING TO LET—DINING-ROOM, PARLOR, four bedrooms and kitchen, gas and water in house. Apply 473 York street.

HOUSING TO LET—DINING-ROOM, PARLOR, four bedrooms and kitchen, gas and water in house. Apply 473 York street.

HOUSING TO LET—DINING-ROOM, PARLOR, four bedrooms and kitchen, gas and water in house. Apply 473 York street.

HOUSING TO LET—DINING-ROOM, PARLOR, four bedrooms and kitchen, gas and water in house. Apply 473 York street.

HOUSING TO LET—DINING-ROOM, PARLOR, four bedrooms and kitchen, gas and water in house. Apply 473 York street.

HOUSING TO LET—DINING-ROOM, PARLOR, four bedrooms and kitchen, gas and water in house. Apply 473 York street.

HOUSING TO LET—DINING-ROOM, PARLOR, four bedrooms and kitchen, gas and water in house. Apply 473 York street.

HOUSING TO LET—DINING-ROOM, PARLOR, four bedrooms and kitchen, gas and water in house. Apply 473 York street.

HOUSING TO LET—DINING-ROOM, PARLOR, four bedrooms and kitchen, gas and water in house. Apply 473 York street.

HOUSING TO LET—DINING-ROOM, PARLOR, four bedrooms and kitchen, gas and water in house. Apply 473 York street.

HOUSING TO LET—DINING-ROOM, PARLOR, four bedrooms and kitchen, gas and water in house. Apply 473 York street.

HOUSING TO LET—DINING-ROOM, PARLOR, four bedrooms and kitchen, gas and water in house. Apply 473 York street.

HOUSING TO LET—DINING-ROOM, PARLOR, four bedrooms and kitchen, gas and water in house. Apply 473 York street.