

PLASTERING AND CEMENT WORK

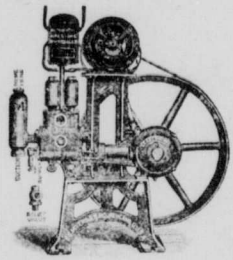
Get our prices on the above work
Repairing neatly and promptly done

A. J. THOMAS

Cement and Plaster Contractor

Phone 193

Waterdown



We show this week a cut of the latest in Electric House Pumps, with automatic cut-out. This pump regulates the supply of water at regular pressure to Tank, and brings it from a well or cistern if not over 25 feet deep and any reasonable distance. This pump has no gears, is almost noiseless in operation, self oiling, self regulating, high-grade motor.

We endeavor to keep the latest and very best ideas in Hydro-Pneumatic Force and Lift Pumps. We also supply Electric and Gasoline driven Washers and Wringers and a complete line of Farm Equipment.

C. RICHARDS

The Farm Supply House

32 MARKET ST.

HAMILTON

MAPLE PARK SURVEY

CORNER MAIN AND SCHOOL STREETS
WATERDOWN

Lots 50 by 150 to 265 Feet

OWN YOUR OWN BUNGALOW

Lots overlook Hamilton, the Bay
and Cement Highway.

Lots to suit the purchaser. Easy
Terms.

C. P. McGregor, Owner

Phone 168

Waterdown

PAINTING AND PAPER HANGING

Estimates Given Free

Phone 198

Peter Mitchell

WATERDOWN,

ONTARIO

NOTICE

All expired subscriptions to the Review will be discontinued after the 1st of June. The increasing cost of paper makes this necessary.

Gordon & Son

LADIES and GENTS

CUSTOM TAILORS

Cleaning, Pressing and
Repairing a Specialty

PHONE 153
WATERDOWN

D. E. Knowles J. E. Sparks

KNOWLES AND SPARKS

Funeral Directors

Prompt and Courteous Service
Day or Night

Prices Moderate

Phone 19-3

Dundas St. Waterdown

R. J. VANCE

DENTIST

Mill Street Waterdown

John Kitching Mervyn Kitching

Kitching & Son

FUNERAL
DIRECTORS

Up to Date Equipment

Motor or Horse Hearse

We Pay All Telephone Charges

Waterdown Ontario

Westover Branch at
Markle's Store

EAGER'S WATERDOWN

**Be Prepared
for the Holiday**

Get Your Requirments Here

Men's New Neckwear

The up to the minute style, the stay in shape style, All stitched so the tie will stay in shape. A very special assortment of colors and patterns.

\$1 to \$2.75 each

Straw Hats

Men's New Sailor Shape Straw Hats
Fine straw and the new shapes

\$3 each

Panama Hats

Men's New Style Panama Hats just
opened, and the prices are reasonable

\$3 to \$8 each

Fedora Felt Hats

Men's New Felt Hats, the new shapes
and colorings.

\$4 and \$5 each

Black Calf Oxford Shoes

Men's Black Calf Oxford Shoes. Very
dressy and extra good quality leather.

\$12 a pair

New Shirts

Men's New Shirts, W. G. & R. make.
All new patterns.

2 to 3.50 each

This Store will Close Every
Wednesday at 12 o'clock noon