

C-190-2 *
C-192-4
C:2

FEBRUARY 1, 1917

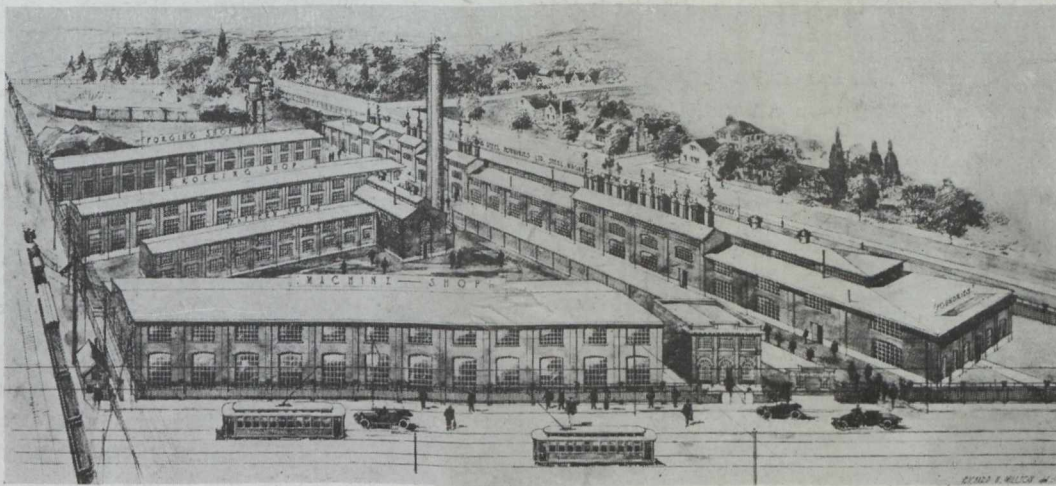
Single Copies 15 Cents

CANADIAN MINING JOURNAL

VOL. XXXVIII

TORONTO

No. 3



The Plant Behind "Hisco" Products

We specialize in the manufacture of all parts pertaining to Cement Mill and Mining Machinery Castings, Stamp Mills, Crushing Plants and Excavating Outfits. Manganese, Chrome or Nickel Steel forms the major part of these machines.

Punches of our Special "Hisco" Steel for forging shells of any size.

Steel Castings for Car Builders to specifications.

MACHINE MOULDED GEARS of any size up to 18 feet diameter.

NO PATTERNS REQUIRED

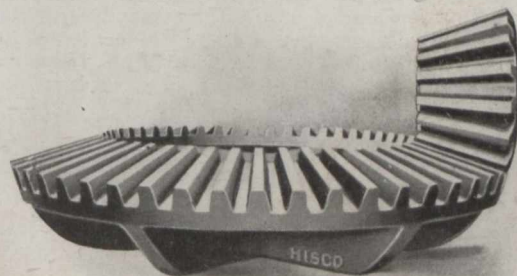
Send us your requirements, we do the rest.

**Hull Iron & Steel Foundries
Limited**

HULL

P. Q.

CANADA



Machine Moulded Bevel Gear and Pinion