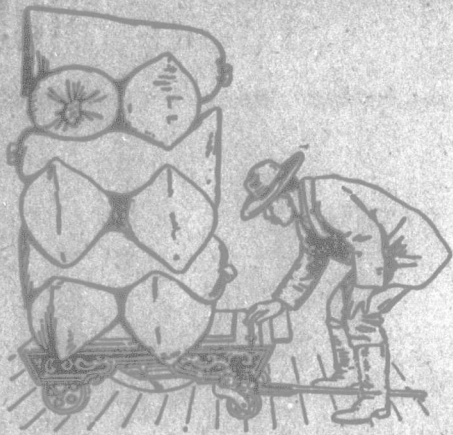


**Know the weight of what you buy or sell**



Wagon Scale, 4 wheels, 7000 lbs. capacity.

Every farmer should own a **SCALE** that will insure protection against loss when selling or imposition when buying his many farm products or supplies.

Constant watchfulness for little business "leaks" is necessary for farming success.

Large losses must be stopped first, but it doesn't take long for a few trifling leaks, here and there, to become large losses too, in the aggregate.

It is not an uncommon thing for a buyer's scale to "weigh short" 5 per cent., while it occasionally happens that the shortage reaches 7 or 8 per cent.

Let us see what it means to you if you get cheated even so little as the lowest estimate, 5 per cent. If your total grain sales were \$1000.00 yearly, 5 per cent. short weight would mean a loss of \$50.00; on \$400.00 worth of poultry the loss would be \$20.00; on \$200.00 worth of butter it would be \$10.00; on \$1000.00 worth of other miscellaneous farm produce, sold by weight, \$50.00. This would mean a total loss of \$130.00 from petty shortages in weight on a moderate sized farm. Imagine what it would figure at 8 per cent.

What can be saved in one year would pay for a Chatham Scale several times over. Can you afford to be without one when you can buy a

**Chatham Farm Scale**

On Two Years' Time, No Cash to Pay until Nov., 1905

A scale is as necessary on a farm as in a store. There is not a day in the year that a farmer doesn't lose some money if he doesn't own one. After the first year a Chatham Farm Scale becomes a money maker as well as a money saver, for, having paid for itself in one year, and still making money by saving it, that money goes into the bank and draws interest.

No Cash Required until Nov., 1905

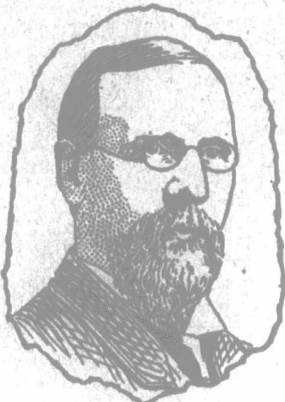
Don't be without a good farm scale, and, while you're about it, get the best—the Chatham.

This Scale is made in two styles—two-wheel **Truck Scale** and four-wheel **Wagon Scale**. Both are fully set up, ready for use, when shipped. They are mechanically perfect, all pivots and bearings being protected from damp and dirt, and the parts interchangeable—and easily replaced. It is the simplest and handiest scale made. Drop a lever and it becomes a strong truck; raise the lever and you have an accurately adjusted, perfectly constructed farm scale.

When the lever is dropped, no weight or wear comes upon the knife edges of the scale. No other farm scale has this feature, by virtue of which our scale averages to wear years before the pivots get dull.

Every Chatham Farm Scale is carefully tested by the Government Inspector of Weights and Measures, and carries his certificate of accuracy.

We have a booklet giving full particulars **FREE**. Send for it to-day.



MANSON CAMPBELL.

The **MANSON CAMPBELL CO., Limited**

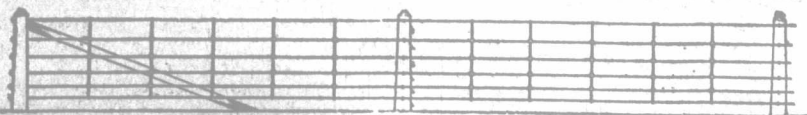
CHATHAM, CANADA

Dept. No. 302

Manufacturers of the Chatham Incubators and Brooders and the Chatham Fanning Mill

Distributing Warehouses at Montreal, Que., Brandon, Man., Calgary, Alta., New Westminster, B.C., Halifax, N.S.

**AGENTS WANTED.** Good men who show evidence of true salesmanship will be offered special inducements. 607



**THE ANCHOR WIRE FENCE**

Is the strongest and best farm fence on the market. It is made throughout of No. 9 galvanized steel wire, either plain or coiled, but heavier uprights may be used if desired. Any intelligent person can construct the fence by following directions as given in our free catalogue. Agents wanted.

GATES AND FENCE WIRE FOR SALE.

ESPLEN, FRAME & COMPANY, STRATFORD, ONT.

**ADVERTISE IN THE ADVOCATE**

In answering any advertisement on this page, kindly mention the FARMER'S ADVOCATE.

**The Railways Look to Permanency**

They are the largest users of fencing in the country, and investigate thoroughly the merits of the fence they use. More "Ideal" fencing is being used by the railways this year than any other make, demonstrating its superiority. Investigation has shown that it decreases the cost of maintenance.

Farmers who purchase "Ideal" are not experimenting. "Ideal" is made of No. 9 galvanized steel wire throughout.

A postal card will bring **FREE** our Illustrated Catalogue of Fencing and Gates. Write for it to-day.

**THE MCGREGOR-RANWELL FENCE CO., LTD., Walkerville, Ont.**  
DO NOT EXPERIMENT. BUY THE "IDEAL."

**Galvanized Steel Siding**

**LASTS A LIFE TIME**

Applicable to Dwelling Houses, Stores, Factories, Warehouses—in fact, every kind of building. There is no limit to its use as an outside covering. It very materially enhances the appearance of any structure at the minimum of cost.

Greater protection is afforded against the ravages of fire, hence less money need be squandered in fire risk premiums.

The Classic Kids will gladly furnish details.

**GALT ART METAL CO., Limited, GALT, ONT.**

THE PIONEER SEED HOUSE OF CANADA

**BRUCE'S NEW CENTURY SWEDE TURNIP**

After carefully testing this variety for four years, we have no hesitation in offering it as the very best shipping variety on the market, while for cooking purposes it excels all the ordinary Swedes. It is a purple-topped Swede resembling the Westbury, of splendid uniform growth, and of fine quality, and the roots are clean and well-shaped. It is the best Swede we know of to resist mildew, and is a very heavy cropper. All that have grown it will have no other.

Prices: 1 lb., 12c.; 1/2 lb., 10c.; 1 lb., 30c.; 4 lbs., \$1.10, postpaid.

Our beautifully-illustrated Catalogue of Seeds—88 pages—mailed free to all applicants.

**JOHN A. BRUCE & CO.,**  
Established 1850.  
HAMILTON, ONT. CANADA.