

ANNUAL MEETING
HELD YESTERDAY

New Brunswick Provincial
Branch of Canadian Red
Cross Society in Session—
Reports Received and Offi-
cers Elected.

The annual meeting of the New Brunswick Provincial Branch of the Canadian Red Cross Society was held yesterday afternoon at the mayor's office, His Worship, the president, in the chair.

The present included His Honor, Lieut.-Gov. Pugsley, Mayor, B. Branch, His Worship the Mayor, Lady Tilley, C. B. Allan, Miss Clements, Allan FitzRandolph, Esq., General McLean, Col. Sturdee, Mrs. J. A. McAvity, president of the St. John's local branch, the Countess of Ashburnham, of the Ashburnham Branch, Frederickson, Mrs. J. V. Anglin, president of the Lunenburg Branch, Mrs. A. Schofield, president Hampton Red Cross, Miss Allison and Miss Pitcher, from Moncton; Mrs. Wm. McIntosh, Mrs. F. J. Hardings, Mrs. Lawrence, Mrs. F. Fairweather, Miss Allen Walker, Mrs. Hayes, Mrs. Sturdee, Mrs. C. B. Allan, Mrs. W. D. Forster, Mrs. Doody, Mrs. F. B. Ellis, Mrs. F. H. Taylor, Mrs. Frank White, Miss Edith Skinner, Mrs. Vroom, Mrs. W. H. Shaw, Mrs. Bonnell, Mrs. G. F. Fisher, Mrs. Dearden, K. G. Schofield, Miss McCain, supervisor of the Women's Institutes, Miss Fiewelling, supervisor of the Home Efficiency Clubs.

General Potheringham, director general of medical services, Colonel Forster and Col. Jost, A. D. M. S., of this military district, were also present.

After the meeting was called to order and the minutes read, Lady Tilley read a letter from Colonel Noel Marshall, chairman of the executive, C. R. C. S. Toronto, regretting his inability to be present at the meeting. In his letter Col. Marshall also stated that the Red Cross Society would carry on its work for some time to come, as he expected there would be men in hospital in England until January, 1920, as well as many thousands in Canada. He also congratulated the Red Cross in New Brunswick upon the excellent work which had been done in the province during the last four years under Lady Tilley's direction.

Lady Tilley then presented her report as organizing president, and it was moved by Colonel Sturdee and seconded by the Lieut.-Governor that the report be accepted, and a hearty vote of thanks be given her for the splendid work accomplished since 1914.

His Worship then asked General Potheringham to speak. In addressing the meeting General Potheringham referred to the very pleasant relations existing between the Army Medical Service and the Canadian Red Cross Society and of the great help rendered during the war. He stated that there were three sources of supply for the military hospitals, first the regular army stores, secondly the Red Cross Society, and thirdly the other patriotic societies and individuals interested in these hospitals. The Red Cross Society had been given official recognition by the military authorities, as the channel through which all supplies save those issued by the Military Department, should come. This was done in order that there should be no overlapping or waste, and was carried out by means of indentures issued by the D. M. S. of the military district. In this way other patriotic societies and individuals could do their part through the Red Cross Society. He also spoke of the well defined line of the work of the Red Cross under the Geneva Convention, and of the way in which assistance might be rendered in time of disaster, etc. He expressed his pleasure at being able to attend the meeting, a pleasure heartily reciprocated by those present.

Reports were also presented by Miss Clements, secretary, C. B. Allan, treasurer, Wm. McIntosh and Mrs. F. J. Hardings for the sphagnum moss, and Mrs. Frank Fairweather for the hospital committee.

Lady Ashburnham read a most interesting account of the activities of the Ashburnham Branch in connection with the military hospital at Fredericton, showing a splendid work accomplished there.

Miss Fiewelling, supervisor of the Home Efficiency Clubs, told of the interest these clubs had taken in the Red Cross. There are now over 200 of these clubs, all willing and anxious to work for the Red Cross during the coming winter. These clubs are organized in the schools and meet once through the local branches in their locality.

Officers were elected for the coming year as follows:

Patron—His Honor the Lieut.-Governor.
President—His Worship the Mayor.
Organizing president—Lady Tilley.
Vice-president—Allan FitzRandolph.
Secretary—Miss Elsie Clements.
Treasurer—C. B. Allan.
Executive committee—Major General H. H. McLean, M. P., Lieut.-Col. T. J. Loggie, J. S. O., Fredericton; Col. E. T.

ERNEST HUTCHINSON DEAD
AFTER VERY BRIEF ILLNESS

Well Known Lumber Merchant Passes Away in South Carolina, While His Wife Was in St. John on Her Way to Join Him—One of New Brunswick's Foremost Business Men, Interested in All Public Affairs—Formerly in Politics and Generous in the Promotion of All Good Works.

Special to The Standard.

Newcastle, Dec. 5.—Miramichi lost a most distinguished and respected business man and citizen in the death of Ernest Hutchinson, of Douglastown, today. Ernest Hutchinson, of Douglastown, deceased, who was a retired lumber operator, was seventy-one years old. He leaves his widow, formerly Miss Jane Johnston, of Chatham, and two children, Richard, manager of the Babcock and Wilcox Company, Boston, and Belle, now Mrs. Hugh G. Moncrief, of Winnipeg. Death was due to influenza. Deceased had left home on an automobile trip some three weeks ago. Mrs. Hutchinson was in St. John, en route to Boston, when she and news reached her. Deceased when a young man bought out from his father, Richard Hutchinson, who had once been a member of the firm of Gilmore and Rankine, his interest in the lumber mills at Douglastown, which business he ran successfully until he sold out to the Miramichi Lumber Company, about ten years ago. He knew the business thoroughly, being himself an expert mechanic conversant with all details of lumbering and milling. Deceased took great interest in politics, and sat for eight years in the New Brunswick Legislature. He was never a strong party man, but always worked for what he thought best for the country at the time. When Northumberland County was incorporated in 1874, Mr. Hutchinson was elected county councillor for Newcastle parish, and became the first warden.

In 1878, along with Allan A. Davidson, Michael Adams and T. P. Gillespie, deceased was elected to the Legislature. In 1883 he was on a ticket with Gillespie, Hon. John P. Burchill, and Thos. Troy, the other candidates being Michael Adams and W. A. Park. He and Troy were defeated. In 1888 he ran again, this time on a ticket with Adams, Park and L. J. Tweedie, and all were elected. In 1890 his ticket included John Morrissey, Theophilus DesBrisay and Anthony Adams, and all were defeated, the successful candidates being Tweedie, Burchill, John O'Brien and James Robinson. This was the last election Mr. Hutchinson contested.

The matter of the Christmas stock for soldiers and sailors in the military hospitals in the province was brought up, and it was decided that a stocking be provided for every man in hospital at that time. Reports presented at this meeting will be published in full in the Saturday morning paper.

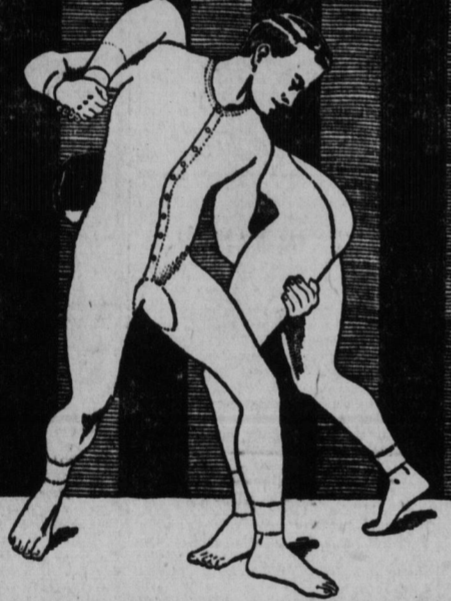
Deceased was a very widely read man, conversant with every topic of general interest, and had one of the best libraries in the country. He travelled extensively and kept abreast of the times in every respect. He was engaged in numerous acts of private charity. Mr. Hutchinson left two great monuments of his munificence. He built the Associated Ledges Hall for Douglastown, at a cost of some twelve thousand dollars, and in 1916

there was finished and handed over to the trustees the magnificent Miramichi hospital at Newcastle, built and equipped entirely by Mr. Hutchinson at a cost of about one hundred thousand dollars. This year he presented the hospital with an additional building, which cost some five thousand dollars. In his early days, deceased was a military man, and rose to a captaincy in the old Northumberland militia. Deceased was for years a

member of the Miramichi Free Mason Lodge, of Chatham, and was a past master. He had long been a member of the Highland Society at Miramichi and had several times been president. For years deceased was a member of the Southwest Miramichi Boom Company. During his long and active business career, Mr. Hutchinson employed many people, and came into contact with many more, and his death will be widely regretted.

THE WAR HAS TAUGHT US
to save and to serve. Don't waste
food or fuel. When you eat wheat be
sure it is the whole wheat. It is all Food

Shredded Wheat
is the whole wheat nothing wasted,
nothing thrown away. Ready cook-
ed, ready-to-eat. Saves fuel, saves
food, saves health. For any meal
with milk or cream or fruits.



Stands Strenuous Wear

STANFIELD'S
Unshrinkable
UNDERWEAR

YOU are certain to get value
when you buy STANFIELD'S—
The Underwear that protects your health—your
Comfort and your Money. STANFIELD'S is soft, warm,
durable, and is worth every penny your dealer asks for it.
Stanfield's Label is your guarantee for genuine underwear satisfaction.

Made in Combinations and Two-Piece Suits, in full length,
knee and elbow length, and sleeveless, for Men and Women.

Stanfield's Adjustable Combinations and
Sleepers for growing Children. (Patented).

Sample Book, showing different weights
and textures, mailed free.—Write:

STANFIELD'S LIMITED, - TRURO, N.S.

KNOCKS OUT PAIN
THE FIRST ROUND

Comforting relief from pain
makes Sloan's the
World's Liniment

This famous reliever of rheumatic
aches, soreness, stiffness, painful
sprains, neuralgic pains, and most
other external twinges that humanity
suffers from, enjoys its great sales
because it practically never fails to
bring speedy, comforting relief.
Always ready for use. Takes little
to penetrate without rubbing and pro-
duce results. Clean, refreshing. Made
in Canada. At all drug stores. A
large bottle means economy.

Sloan's
Liniment
Kills Pain

30c., 60c., \$1.20.

Simple Herbs
Cure Serious
Troubles

MANY of the diseases
of womanhood may
be prevented with care.
Unusual excitement—
mental or physical—dis-
turbs the delicate bal-
ance of woman's sen-
sitive nerves, and upsets
her whole system. At the first indica-
tion of nervousness or any irregularity,
take

Dr. Wilson's
HERBINE BITTERS

It's safe and certain—purely vegetable
—regulates kidneys and bowels—pre-
vents headaches, indigestion, stomach
trouble—purifies the blood—tones up
and invigorates mind and body.

At most stores. 25c. a bottle. Family
size, five times as large, \$1.

The Braxley Drug Company, Limited
St. John, N.B.

SHE SUFFERED
FIVE YEARS

Finally Restored to Health
by Lydia E. Pinkham's
Vegetable Compound.

Key West, Fla.—"For five years I
suffered from irregularities, with ter-
rible pains and an
awful weakness in
my back. The doc-
tor gave me dif-
ferent medicines but
they did me no good.
A friend asked me to
try Lydia E. Pink-
ham's Vegetable
Compound and I
found it to be the
best medicine I ever
tried because it
made me well, and
I can now do my
housework. I am telling my friends
about it."—Mrs. J. M. CAMUS, 728
Caroline St., Key West, Florida.

Many women at some period in their
life suffer from ailments peculiar to their
sex and which in most cases may be
readily relieved by this famous root and
herb medicine, Lydia E. Pinkham's
Vegetable Compound, just as Mrs.
Camus found it helped her after suffer-
ing for years and trying everything else
in vain.

If you have any annoying symptoms
you fail to understand, write Lydia E.
Pinkham Medicine Co., Lynn, Mass.
The results of their 40 years experience
in advising women on this subject is at
your service.

NOSE CLOGGED FROM
A COLD OR CATARRH

Apply Cream in Nostrils To
Open Up Air Passages.

Ah! What relief! Over clogged
nostrils open right up, the air pas-
sages of your head are clear and you
can breathe freely. No more hawk-
ing, sniffling, mucous discharge, head-
ache, dryness—no struggling for
breath at night, your cold or catarrh
is gone.

Don't stay stuffed up! Get a small
bottle of Ely's Cream Balm from
your druggist now. Apply a little of
this fragrant, antiseptic cream in
your nostrils, let it penetrate through
every air passage of the head, soothe
and heal the swollen, inflamed mucous
membrane, giving you instant relief.
Ely's Cream Balm is just what every
cold and catarrh sufferer has been
seeking. It's just splendid.

—By GEORGE McMANUS.

BRINGING UP FATHER.



West Indies
RMS
The most attractive Tourist Route
available to Canadian Travelers today.
Liners sent on request
RE VIA: CAN. STEAM PACKET CO.
HALIFAX, N. S.

UNARD
ANCHOR
CHOR DONALDSON

Passenger and Cargo Services
PAX, ST. JOHN, PORTLAND,
NEW YORK AND BOSTON TO
LONDON, LIVERPOOL
STO. AND GLASGOW
By sea or by cable to
Britain, Ireland, Scandinavia,
France, Portugal, Spain, Switzer-
land.
Further information apply to
Agents or
ROBERT REPOD CO., Limited,
General Agents, Canadian Service,
100 William St., St. John, N. B.

Maritime Steamship Co.
Limited.

TIME TABLE

ST. JOHN, N.B. TO ST. JOHN, N.B.
SUNDAY, 10:00 a.m. to St. John, N.B.
MONDAY, 10:00 a.m. to St. John, N.B.
TUESDAY, 10:00 a.m. to St. John, N.B.
WEDNESDAY, 10:00 a.m. to St. John, N.B.
THURSDAY, 10:00 a.m. to St. John, N.B.
FRIDAY, 10:00 a.m. to St. John, N.B.
SATURDAY, 10:00 a.m. to St. John, N.B.
SUNDAY, 10:00 a.m. to St. John, N.B.
MONDAY, 10:00 a.m. to St. John, N.B.
TUESDAY, 10:00 a.m. to St. John, N.B.
WEDNESDAY, 10:00 a.m. to St. John, N.B.
THURSDAY, 10:00 a.m. to St. John, N.B.
FRIDAY, 10:00 a.m. to St. John, N.B.
SATURDAY, 10:00 a.m. to St. John, N.B.
SUNDAY, 10:00 a.m. to St. John, N.B.
MONDAY, 10:00 a.m. to St. John, N.B.
TUESDAY, 10:00 a.m. to St. John, N.B.
WEDNESDAY, 10:00 a.m. to St. John, N.B.
THURSDAY, 10:00 a.m. to St. John, N.B.
FRIDAY, 10:00 a.m. to St. John, N.B.
SATURDAY, 10:00 a.m. to St. John, N.B.
SUNDAY, 10:00 a.m. to St. John, N.B.
MONDAY, 10:00 a.m. to St. John, N.B.
TUESDAY, 10:00 a.m. to St. John, N.B.
WEDNESDAY, 10:00 a.m. to St. John, N.B.
THURSDAY, 10:00 a.m. to St. John, N.B.
FRIDAY, 10:00 a.m. to St. John, N.B.
SATURDAY, 10:00 a.m. to St. John, N.B.
SUNDAY, 10:00 a.m. to St. John, N.B.
MONDAY, 10:00 a.m. to St. John, N.B.
TUESDAY, 10:00 a.m. to St. John, N.B.
WEDNESDAY, 10:00 a.m. to St. John, N.B.
THURSDAY, 10:00 a.m. to St. John, N.B.
FRIDAY, 10:00 a.m. to St. John, N.B.
SATURDAY, 10:00 a.m. to St. John, N.B.
SUNDAY, 10:00 a.m. to St. John, N.B.
MONDAY, 10:00 a.m. to St. John, N.B.
TUESDAY, 10:00 a.m. to St. John, N.B.
WEDNESDAY, 10:00 a.m. to St. John, N.B.
THURSDAY, 10:00 a.m. to St. John, N.B.
FRIDAY, 10:00 a.m. to St. John, N.B.
SATURDAY, 10:00 a.m. to St. John, N.B.
SUNDAY, 10:00 a.m. to St. John, N.B.
MONDAY, 10:00 a.m. to St. John, N.B.
TUESDAY, 10:00 a.m. to St. John, N.B.
WEDNESDAY, 10:00 a.m. to St. John, N.B.
THURSDAY, 10:00 a.m. to St. John, N.B.
FRIDAY, 10:00 a.m. to St. John, N.B.
SATURDAY, 10:00 a.m. to St. John, N.B.
SUNDAY, 10:00 a.m. to St. John, N.B.
MONDAY, 10:00 a.m. to St. John, N.B.
TUESDAY, 10:00 a.m. to St. John, N.B.
WEDNESDAY, 10:00 a.m. to St. John, N.B.
THURSDAY, 10:00 a.m. to St. John, N.B.
FRIDAY, 10:00 a.m. to St. John, N.B.
SATURDAY, 10:00 a.m. to St. John, N.B.
SUNDAY, 10:00 a.m. to St. John, N.B.
MONDAY, 10:00 a.m. to St. John, N.B.
TUESDAY, 10:00 a.m. to St. John, N.B.
WEDNESDAY, 10:00 a.m. to St. John, N.B.
THURSDAY, 10:00 a.m. to St. John, N.B.
FRIDAY, 10:00 a.m. to St. John, N.B.
SATURDAY, 10:00 a.m. to St. John, N.B.
SUNDAY, 10:00 a.m. to St. John, N.B.
MONDAY, 10:00 a.m. to St. John, N.B.
TUESDAY, 10:00 a.m. to St. John, N.B.
WEDNESDAY, 10:00 a.m. to St. John, N.B.
THURSDAY, 10:00 a.m. to St. John, N.B.
FRIDAY, 10:00 a.m. to St. John, N.B.
SATURDAY, 10:00 a.m. to St. John, N.B.
SUNDAY, 10:00 a.m. to St. John, N.B.
MONDAY, 10:00 a.m. to St. John, N.B.
TUESDAY, 10:00 a.m. to St. John, N.B.
WEDNESDAY, 10:00 a.m. to St. John, N.B.
THURSDAY, 10:00 a.m. to St. John, N.B.
FRIDAY, 10:00 a.m. to St. John, N.B.
SATURDAY, 10:00 a.m. to St. John, N.B.
SUNDAY, 10:00 a.m. to St. John, N.B.
MONDAY, 10:00 a.m. to St. John, N.B.
TUESDAY, 10:00 a.m. to St. John, N.B.
WEDNESDAY, 10:00 a.m. to St. John, N.B.
THURSDAY, 10:00 a.m. to St. John, N.B.
FRIDAY, 10:00 a.m. to St. John, N.B.
SATURDAY, 10:00 a.m. to St. John, N.B.
SUNDAY, 10:00 a.m. to St. John, N.B.
MONDAY, 10:00 a.m. to St. John, N.B.
TUESDAY, 10:00 a.m. to St. John, N.B.
WEDNESDAY, 10:00 a.m. to St. John, N.B.
THURSDAY, 10:00 a.m. to St. John, N.B.
FRIDAY, 10:00 a.m. to St. John, N.B.
SATURDAY, 10:00 a.m. to St. John, N.B.
SUNDAY, 10:00 a.m. to St. John, N.B.
MONDAY, 10:00 a.m. to St. John, N.B.
TUESDAY, 10:00 a.m. to St. John, N.B.
WEDNESDAY, 10:00 a.m. to St. John, N.B.
THURSDAY, 10:00 a.m. to St. John, N.B.
FRIDAY, 10:00 a.m. to St. John, N.B.
SATURDAY, 10:00 a.m. to St. John, N.B.
SUNDAY, 10:00 a.m. to St. John, N.B.
MONDAY, 10:00 a.m. to St. John, N.B.
TUESDAY, 10:00 a.m. to St. John, N.B.
WEDNESDAY, 10:00 a.m. to St. John, N.B.
THURSDAY, 10:00 a.m. to St. John, N.B.
FRIDAY, 10:00 a.m. to St. John, N.B.
SATURDAY, 10:00 a.m. to St. John, N.B.
SUNDAY, 10:00 a.m. to St. John, N.B.
MONDAY, 10:00 a.m. to St. John, N.B.
TUESDAY, 10:00 a.m. to St. John, N.B.
WEDNESDAY, 10:00 a.m. to St. John, N.B.
THURSDAY, 10:00 a.m. to St. John, N.B.
FRIDAY, 10:00 a.m. to St. John, N.B.
SATURDAY, 10:00 a.m. to St. John, N.B.
SUNDAY, 10:00 a.m. to St. John, N.B.
MONDAY, 10:00 a.m. to St. John, N.B.
TUESDAY, 10:00 a.m. to St. John, N.B.
WEDNESDAY, 10:00 a.m. to St. John, N.B.
THURSDAY, 10:00 a.m. to St. John, N.B.
FRIDAY, 10:00 a.m. to St. John, N.B.
SATURDAY, 10:00 a.m. to St. John, N.B.
SUNDAY, 10:00 a.m. to St. John, N.B.
MONDAY, 10:00 a.m. to St. John, N.B.
TUESDAY, 10:00 a.m. to St. John, N.B.
WEDNESDAY, 10:00 a.m. to St. John, N.B.
THURSDAY, 10:00 a.m. to St. John, N.B.
FRIDAY, 10:00 a.m. to St. John, N.B.
SATURDAY, 10:00 a.m. to St. John, N.B.
SUNDAY, 10:00 a.m. to St. John, N.B.
MONDAY, 10:00 a.m. to St. John, N.B.
TUESDAY, 10:00 a.m. to St. John, N.B.
WEDNESDAY, 10:00 a.m. to St. John, N.B.
THURSDAY, 10:00 a.m. to St. John, N.B.
FRIDAY, 10:00 a.m. to St. John, N.B.
SATURDAY, 10:00 a.m. to St. John, N.B.
SUNDAY, 10:00 a.m. to St. John, N.B.
MONDAY, 10:00 a.m. to St. John, N.B.
TUESDAY, 10:00 a.m. to St. John, N.B.
WEDNESDAY, 10:00 a.m. to St. John, N.B.
THURSDAY, 10:00 a.m. to St. John, N.B.
FRIDAY, 10:00 a.m. to St. John, N.B.
SATURDAY, 10:00 a.m. to St. John, N.B.
SUNDAY, 10:00 a.m. to St. John, N.B.
MONDAY, 10:00 a.m. to St. John, N.B.
TUESDAY, 10:00 a.m. to St. John, N.B.
WEDNESDAY, 10:00 a.m. to St. John, N.B.
THURSDAY, 10:00 a.m. to St. John, N.B.
FRIDAY, 10:00 a.m. to St. John, N.B.
SATURDAY, 10:00 a.m. to St. John, N.B.
SUNDAY, 10:00 a.m. to St. John, N.B.
MONDAY, 10:00 a.m. to St. John, N.B.
TUESDAY, 10:00 a.m. to St. John, N.B.
WEDNESDAY, 10:00 a.m. to St. John, N.B.
THURSDAY, 10:00 a.m. to St. John, N.B.
FRIDAY, 10:00 a.m. to St. John, N.B.
SATURDAY, 10:00 a.m. to St. John, N.B.
SUNDAY, 10:00 a.m. to St. John, N.B.
MONDAY, 10:00 a.m. to St. John, N.B.
TUESDAY, 10:00 a.m. to St. John, N.B.
WEDNESDAY, 10:00 a.m. to St. John, N.B.
THURSDAY, 10:00 a.m. to St. John, N.B.
FRIDAY, 10:00 a.m. to St. John, N.B.
SATURDAY, 10:00 a.m. to St. John, N.B.
SUNDAY, 10:00 a.m. to St. John, N.B.
MONDAY, 10:00 a.m. to St. John, N.B.
TUESDAY, 10:00 a.m. to St. John, N.B.
WEDNESDAY, 10:00 a.m. to St. John, N.B.
THURSDAY, 10:00 a.m. to St. John, N.B.
FRIDAY, 10:00 a.m. to St. John, N.B.
SATURDAY, 10:00 a.m. to St. John, N.B.
SUNDAY, 10:00 a.m. to St. John, N.B.
MONDAY, 10:00 a.m. to St. John, N.B.
TUESDAY, 10:00 a.m. to St. John, N.B.
WEDNESDAY, 10:00 a.m. to St. John, N.B.
THURSDAY, 10:00 a.m. to St. John, N.B.
FRIDAY, 10:00 a.m. to St. John, N.B.
SATURDAY, 10:00 a.m. to St. John, N.B.
SUNDAY, 10:00 a.m. to St. John, N.B.
MONDAY, 10:00 a.m. to St. John, N.B.
TUESDAY, 10:00 a.m. to St. John, N.B.
WEDNESDAY, 10:00 a.m. to St. John, N.B.
THURSDAY, 10:00 a.m. to St. John, N.B.
FRIDAY, 10:00 a.m. to St. John, N.B.
SATURDAY, 10:00 a.m. to St. John, N.B.
SUNDAY, 10:00 a.m. to St. John, N.B.
MONDAY, 10:00 a.m. to St. John, N.B.
TUESDAY, 10:00 a.m. to St. John, N.B.
WEDNESDAY, 10:00 a.m. to St. John, N.B.
THURSDAY, 10:00 a.m. to St. John, N.B.
FRIDAY, 10:00 a.m. to St. John, N.B.
SATURDAY, 10:00 a.m. to St. John, N.B.
SUNDAY, 10:00 a.m. to St. John, N.B.
MONDAY, 10:00 a.m. to St. John, N.B.
TUESDAY, 10:00 a.m. to St. John, N.B.
WEDNESDAY, 10:00 a.m. to St. John, N.B.
THURSDAY, 10:00 a.m. to St. John, N.B.
FRIDAY, 10:00 a.m. to St. John, N.B.
SATURDAY, 10:00 a.m. to St. John, N.B.
SUNDAY, 10:00 a.m. to St. John, N.B.
MONDAY, 10:00 a.m. to St. John, N.B.
TUESDAY, 10:00 a.m. to St. John, N.B.
WEDNESDAY, 10:00 a.m. to St. John, N.B.
THURSDAY, 10:00 a.m. to St. John, N.B.
FRIDAY, 10:00 a.m. to St. John, N.B.
SATURDAY, 10:00 a.m. to St. John, N.B.
SUNDAY, 10:00 a.m. to St. John, N.B.
MONDAY, 10:00 a.m. to St. John, N.B.
TUESDAY, 10:00 a.m. to St. John, N.B.
WEDNESDAY, 10:00 a.m. to St. John, N.B.
THURSDAY, 10:00 a.m. to St. John, N.B.
FRIDAY, 10:00 a.m. to St. John, N.B.
SATURDAY, 10:00 a.m. to St. John, N.B.
SUNDAY, 10:00 a.m. to St. John, N.B.
MONDAY, 10:00 a.m. to St. John, N.B.
TUESDAY, 10:00 a.m. to St. John, N.B.
WEDNESDAY, 10:00 a.m. to St. John, N.B.
THURSDAY, 10:00 a.m. to St. John, N.B.
FRIDAY, 10:00 a.m. to St. John, N.B.
SATURDAY, 10:00 a.m. to St. John, N.B.
SUNDAY, 10:00 a.m. to St. John, N.B.
MONDAY, 10:00 a.m. to St. John, N.B.
TUESDAY, 10:00 a.m. to St. John, N.B.
WEDNESDAY, 10:00 a.m. to St. John, N.B.
THURSDAY, 10:00 a.m. to St. John, N.B.
FRIDAY, 10:00 a.m. to St. John, N.B.
SATURDAY, 10:00 a.m. to St. John, N.B.
SUNDAY, 10:00 a.m. to St. John, N.B.
MONDAY, 10:00 a.m. to St. John, N.B.
TUESDAY, 10:00 a.m. to St. John, N.B.
WEDNESDAY, 10:00 a.m. to St. John, N.B.
THURSDAY, 10:00 a.m. to St. John, N.B.
FRIDAY, 10:00 a.m. to St. John, N.B.
SATURDAY, 10:00 a.m. to St. John, N.B.
SUNDAY, 10:00 a.m. to St. John, N.B.
MONDAY, 10:00 a.m. to St. John, N.B.
TUESDAY, 10:00 a.m. to St. John, N.B.
WEDNESDAY, 10:00 a.m. to St. John, N.B.
THURSDAY, 10:00 a.m. to St. John, N.B.
FRIDAY, 10:00 a.m. to St. John, N.B.
SATURDAY, 10:00 a.m. to St. John, N.B.
SUNDAY, 10:00 a.m. to St. John, N.B.
MONDAY, 10:00 a.m. to St. John, N.B.
TUESDAY, 10:00 a.m. to St. John, N.B.
WEDNESDAY, 10:00 a.m. to St. John, N.B.
THURSDAY, 10:00 a.m. to St. John, N.B.
FRIDAY, 10:00 a.m. to St. John, N.B.
SATURDAY, 10:00 a.m. to St. John, N.B.
SUNDAY, 10:00 a.m. to St. John, N.B.
MONDAY, 10:00 a.m. to St. John, N.B.
TUESDAY, 10:00 a.m. to St. John, N.B.
WEDNESDAY, 10:00 a.m. to St. John, N.B.
THURSDAY, 10:00 a.m. to St. John, N.B.
FRIDAY, 10:00 a.m. to St. John, N.B.
SATURDAY, 10:00 a.m. to St. John, N.B.
SUNDAY, 10:00 a.m. to St. John, N.B.
MONDAY, 10:00 a.m. to St. John, N.B.
TUESDAY, 10:00 a.m. to St. John, N.B.
WEDNESDAY, 10:00 a.m. to St. John, N.B.
THURSDAY, 10:00 a.m. to St. John, N.B.
FRIDAY, 10:00 a.m. to St. John, N.B.
SATURDAY, 10:00 a.m. to St. John, N.B.
SUNDAY, 10:00 a.m. to St. John, N.B.
MONDAY, 10:00 a.m. to St. John, N.B.
TUESDAY, 10:00 a.m. to St. John, N.B.
WEDNESDAY, 10:00 a.m. to St. John, N.B.
THURSDAY, 10:00 a.m. to St. John, N.B.
FRIDAY, 10:00 a.m. to St. John, N.B.
SATURDAY, 10:00 a.m. to St. John, N.B.
SUNDAY, 10:00 a.m. to St. John, N.B.
MONDAY, 10:00 a.m. to St. John, N.B.
TUESDAY, 10:00 a.m. to St. John, N.B.
WEDNESDAY, 10:00 a.m. to St. John, N.B.
THURSDAY, 10:00 a.m. to St. John, N.B.
FRIDAY, 10:00 a.m. to St. John, N.B.
SATURDAY, 10:00 a.m. to St. John, N.B.
SUNDAY, 10:00 a.m. to St. John, N.B.
MONDAY, 10:00 a.m. to St. John, N.B.
TUESDAY, 10:00 a.m. to St. John, N.B.
WEDNESDAY, 10:00 a.m. to St. John, N.B.
THURSDAY, 10:00 a.m. to St. John, N.B.
FRIDAY, 10:00 a.m. to St. John, N.B.
SATURDAY, 10:00 a.m. to St. John, N.B.
SUNDAY, 10:00 a.m. to St. John, N.B.
MONDAY, 10:00 a.m. to St. John, N.B.
TUESDAY, 10:00 a.m. to St. John, N.B.
WEDNESDAY, 10:00 a.m. to St. John, N.B.
THURSDAY, 1