

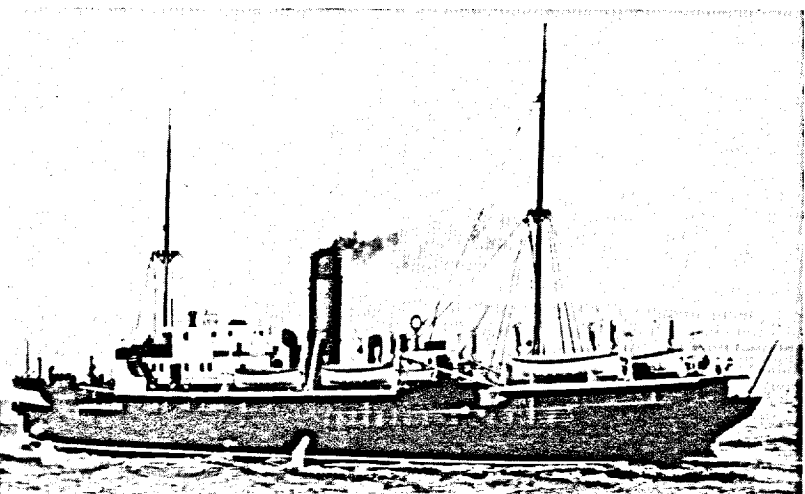
SS "Cabot Strait" runs between Port aux Basques and North Sydney, N. S., connecting the two railheads.

land ports, the Province is linked with other territories by regular steamship services. The fortnightly service on the Boston-Halifax-St. John's-Liverpool run has been resumed as wartime losses of ships have been made good and a weekly run links New York and St. John's by way of Halifax. Montreal and St. John's are joined by steamers, which call en route at Halifax and Charlottetown. There is also a regular service between Montreal and Corner Brook, which goes on to Labrador.

Since 1850 there have been continuous steamship services between St. John's and Halifax and between Halifax and the West Indies. The United Kingdom Government subsidized the Halifax-West Indies run from 1850 until 1886, when the Canadian Government took over the subsidization.

Ports

The foreign trade of the Island is largely concentrated in four ports—St. John's, Botwood, Corner Brook and Port aux Basques.



SS "Northern Ranger" carries passengers and general cargo on the St. John's-Corner Brook route, calling at more than 50 ports in Newfoundland and four in southern Labrador. This is a favourite tourist trip.