

The Roofers' Supply Co.

LIMITED

WHOLESALE AND RETAIL DEALERS IN . . .

ALL KINDS OF ROOFING MATERIAL

Slate, Roofing Felt, Roofing Pitch, Terra Cotta Tiles, Galvanized Iron, Sheet Copper, Slate Nails, &c., &c., &c.

Foot of Bay St. - TORONTO

WILLIAM FRY SCOTT
STRUCTURAL ENGINEER

Consultation or Design: Buildings, Building Construction, Foundations, Walls, Roofs, Bridges, Masonry, Fireproofing, Reinforced Concrete, Reinforced Brick, Steel, Timber, Specifications, Examinations, Valuations, and Reports for Investment.

22 Toronto St., TORONTO, ONT.
Main 1324 North 2064

Please mention this paper when corresponding with advertisers.



BUILDERS' HARDWARE

ARTISTIC, BEAUTIFUL
AND VARIED IN DESIGN



Harmonizing with any style of interior finish. Let us show you our designs and submit an estimate on your requirements whether remodelling or building a new residence. You will find that we are

Headquarters also for



MANTELS, TILING

and FIREPLACE BRASS GOODS



THE VOKES HARDWARE CO. LTD.
111 and 113 Yonge Street
TORONTO

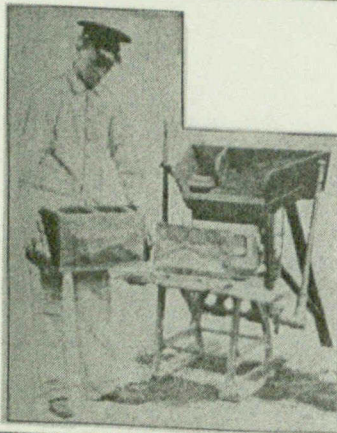
Grown Art Stained Glass Company, Limited

Phone Main 5006

96-98 ADELAIDE ST. E., TORONTO

MEMORIAL AND ART STAINED GLASS

EXPERTS IN Glass-Tiling, Stained Glass, both lead and copper, and Glass Signs of every description



Defy Competition

The Ideal Concrete Machine for the manufacture of Concrete Building Blocks makes it possible to profitably undersell all other building materials in all localities.

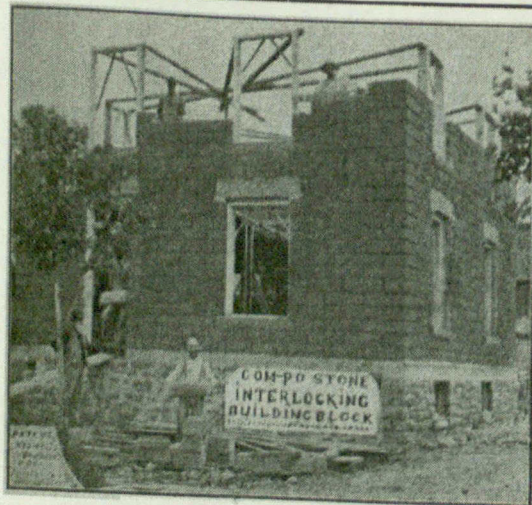
Ideal Blocks can be sold far below the cost of brick, lumber or natural stone. Excel them all in durability and fire and weather proof qualities. Adaptable to any possible architectural design.

IDEAL CONCRETE MACHINERY

Wonderfully simple in construction. No chains, springs or gears. Embody the only principle (face down) permitting the practical use of rich facing material with less expensive material in back of blocks. Adaptable to any size block within capacity.

The same machine makes blocks in countless ornamental designs and natural stone effect. Write and learn how easily, rapidly and profitably *One Man* can turn out Concrete Building blocks with an Ideal machine.

IDEAL CONCRETE MACHINERY CO., LIMITED
LONDON CANADA



Com-Po Stone INTERLOCKING BUILDING BLOCK

THE ONLY CONCRETE Building Block forming continuous "dead air" space (or hollow) wall, the entire length of the wall, including angles. Well "bonded" in wall. Warm in winter, Cool in summer. FIRE, FROST, and WEATHER proof. EASY to build, having all the facilities of brick or stone work, for bedding plates sills and bond timber, for joists, &c. IRRESPECTIVE of face work. EASY to manufacture, no expensive machinery being required. Profitable to user and producer.

If a PARTIAL air space in a wall is beneficial (in any way), the WHOLE, or a continuous air space, must be MORE so.

Com-Po Stone is rendered more DURABLE and TENACIOUS than ordinary concrete by the use of

M. F. Chemical Compound—a cheap and profitable mixture to use in all concrete construction (at a cost of 50 cents per cubic yard.)

Special plans and estimates prepared, for all concrete structures, by

G. T. Martin, Architect,
Smiths Falls Ontario
Patent Rights and Chemical Compound for Sale