

OUR PUZZLER.

205. DOUBLE ACROSTIC.

1. I'm a town, and my name to desory,  
To Siberia please turn your eye.
2. Here a fanciful island you see,  
Represented a model to be.
3. It's a gem which in shell-fish is found,  
And is valued the most when it's round.
4. 'Tis a mountain; and if you may view,  
If you ever should go to Peru.
5. When a man breaks the law, and is caught,  
Then to this he expects to be brought.
6. A most famous believer in fate  
Had to spend his last days in this state.
7. If the name of this port you would learn,  
To the state of La Plata you must turn.

The initials read downwards must be,  
Then a primary planet you'll see:  
And the finals, if also read down,  
An astronomer's name of renown.

206. TRANSLOCATIONS.

1. As I stand, I am the abbreviated name of a  
great prophet; change the vowels consecutively,  
and I become the place where he was preserved  
from danger, a tap-room wrangle, a Spanish  
title, and a clamorous creditor.
2. As I stand, I indicate a body; change the  
vowels, and I am reminded of Joseph and his  
brother Benjamin, an unmarried lady, rural  
verdure, and an obsolete term for a scramble.
3. As I stand, I am either a male or female  
companion; change the vowels, I reduce to  
measure, I am proverbially little, and I never  
join in a chorus.

207. CHARADE.

My first in many a field doth grow—  
Most easy 'tis to guess;  
Without it we should come to woe,  
To trouble and distress.  
My second in a farmer's barn  
You very oft may find;  
And when I say 'tis made of yarn,  
It may come to your mind.  
My whole is but my second, too,  
And used to carry in  
My dear and precious first: so you  
To guess may now begin.

208. LITTLE CHARADES.

1. My first's part of the body, my second is  
beard, my whole is a game.
2. My first is a drawer, my second is venerable,  
my whole is husbandry.
3. My first is an English river, my second is a  
cave, my whole is heavy.
4. My first is a preposition, my second is a  
vowel, my third a covering, my whole is useless.

209. LOGOGRIPH.

A look is my whole, so don't refuse:  
Behold, I am an instrument doctors use;  
Transpose, an English town see plain;  
Again transpose, I am without a stain;  
But, if you behold, and then transpose,  
What is not fat it will disclose;  
But if you take away the tail,  
An English river will prevail:  
Transpose a beverage, there is not a better;  
Begin again, behold and drop a letter,  
A shoe-string you will quickly see;  
Behold me, and a unit 'twill be.

210. ARITHMETICAL PUZZLE.

Take forty-five from forty-five, and forty-five  
remains.

211. DOUBLE ARITHMOREM.

- 500 and shore (a Mediterranean island)  
100E " truth (a German town)  
50 " faster (a Danish island)  
1 " for (a Brazilian mountain)  
51 " be seen (a Prussian town)  
501 " grub (a Prussian town)  
5611 " oak (Siberian isles)  
1 " ess boque(t) (a river of Guiana)  
1001 " a mast (a city in Jesso)  
101 " duet (Austrian mountains—beheaded)  
551 " enter " oro " (a Mexican river).
- The initials name an elegant little animal  
found in Madagascar: the initials will show the  
peculiarity for which it is remarkable.

212. ARITHMETICAL QUESTION.

I purchased tumblers at 10s. a dozen, and sold  
them at as many shillings per dozen as I gained  
pounds on £100. At what price did I sell them.

213. CHARADE.

A portion of a ship  
My primal disclose;  
A certain kind of ring  
My second rightly shows.  
My third one will be seen  
To form part of a pheasant;  
If total was in you,  
You'd think it far from pleasant.

CAISSA'S CASKET.

SATURDAY, Dec. 20th, 1873.

\* \* \* All communications relating to Chess must  
be addressed "CHECKMATE Canada."

CORRECTION.—In Problem No. 25, the R. at Black's  
K. B. 8th should be a Black King.

SOLUTION TO PROBLEM NO. 27.

- White. Black.  
1. Q. to R. 1st. 1. Any.  
2. Mate acc.

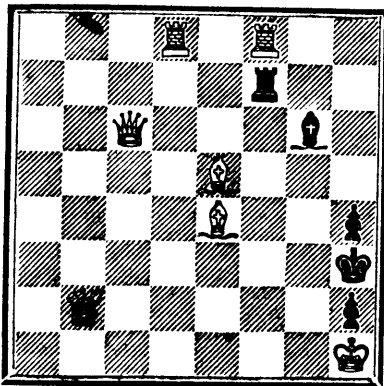
SOLUTION TO PROBLEM NO. 28.

- White. Black.  
1. Kt. to Q. Kt. 4th. 1. K. moves.  
2. Q. to R. 6th or B. 2. "  
3. Q. mates.

PROBLEM NO. 29.

By W. A. SHINKMAN.

BLACK.



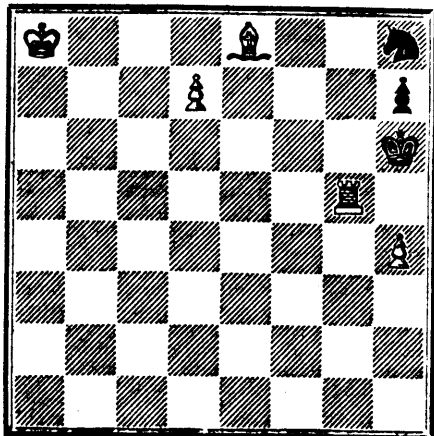
WHITE.

Either to play and mate or self-mate in two moves.

PROBLEM NO. 30.

By W. A. SHINKMAN.

BLACK.



WHITE.

White to play and mate in three moves.

INSTRUCTION IN CHESS.

By "CHECKMATE."

GAME NO. 23.

One of the match games at the Vienna Congress:  
Ruy Lopez Attack.

White. Black.

- DR. FLEISSIG. MR. BLACKBURN.  
1. P. to K. 4th. 1. P. to K. 4th.  
2. Kt. to K. B. 3rd. 2. Kt. to Q. B. 3rd.  
3. B. to Q. Kt. 5th. 3. Kt. to Q. 5th.

Black counter-attacks. This move has been generally  
condemned by the books, but Mr. Bird was  
frequently adopting it and with success gave it quite  
a run at the Vienna Congress.

4. Kt. takes Kt. 4. P. takes Kt.  
5. Castles.

Prof. Anderssen almost invariably plays 5. P. to Q.  
3rd, the move in the text, however, is considered  
better as it avoids the ch. with the Q. at Black's R.  
4th.

6. B. to B. 4th. 5. P. to Q. B. 3rd.

Mr. Whisker believes B. to R. 4th to be better  
than this as it prevents the second player indoubling  
his Queen's Pawns by P. to Q. 4th, and the weak P.  
at Q. 5th is liable to be lost.

7. P. to Q. B. 3rd. 6. Kt. to K. 2nd.  
8. K. P. takes P. 7. P. to Q. 4th.  
9. P. takes P. 8. Kt. takes P.  
10. P. to Q. 3rd. 9. Kt. to Kt. 3rd.  
11. R. to K. 1st (ch) 10. Q. takes P.  
12. B. to K. 3rd. 11. B. to K. 2nd.  
12. Q. to Q. 3rd.

Taking the Q. Kt. P. would have involved Black  
in a fearful attack commencing with 13. B. to Q. B.  
5th.

13. Q. to K. R. 5th.

Taking the Kt. with B. and afterwards playing Q.  
to K. 2nd would have prevented Black castling. Kt.  
to Q. B. 3rd would have been more serviceable than  
the move in the text.

14. B. takes Kt. 13. Castles.  
15. Kt. to B. 3rd. 14. P. takes B.  
16. Q. to K. 2nd. 15. R. to R. 4th.  
17. Kt. to K. 4th. 16. B. to Q. 1st.  
18. P. to Q. 4th. 17. Q. to K. Kt. 3rd.  
19. P. to Q. Kt. 4th. 18. B. to Q. B. 2nd.  
19. P. to Q. Kt. 4th. 18. R. to K. R. 4th.

Hazardous in appearance, but sound in substance  
if the proper continuation be adopted, unfortunately  
for Black, it was not.

20. Kt. to Kt. 3rd. 20. R. to R. 5th.  
21. Q. R. to Q. 1st. 21. P. to Q. Kt. 4th.  
22. B. to Kt. 3rd. 22. B. to Q. 3rd.  
23. P. to Q. R. 3rd. 23. Q. to R. 3rd.  
24. P. to K. R. 3rd. 24. B. to K. Kt. 5th.

Black here sets a trap for White, but is himself  
caught in it. K. to R. 1st with the object of advancing  
the K. B. P. is the most promising course.

25. P. to K. B. 3rd

Had White taken the B. Black would have mated  
in three moves beginning with R. to R. 8th (ch.) The  
move adopted by Dr. Fleissig turns the tables against  
his clever opponent.

26. B. P. takes B. 25. B. takes Kt.  
27. Q. takes B. 26. B. takes R.  
28. P. to Q. 5th. 27. Q. to B. 3rd.  
28. R. to R. 3rd.

The position of this R. is decidedly against Black.  
If he take P. with P., White retakes with R.,  
threatening P. to Kt. 5th.

29. P. to Q. 6th. 29. R. to Q. 1st.  
30. Q. to K. 7th.

Well played. The second player is compelled to  
exchange Queens, and by no means afterward can  
he prevent the advanced Pawn reaching the eighth  
square.

31. P. takes Q. 30. Q. takes Q.  
32. K. to B. 2nd. 31. R. takes R. (ch)

Taking the R. with B. would not do, because Black  
would then win by R. to K. 3rd.

33. R. to K. 2nd. 32. R. to K. B. 3rd (ch)

And Black resigned.

GAME NO. 24.

We conclude our review of games in this opening  
with the following illustrating a not often adopted  
method of continuing the attack:

Ruy Lopez Attack.

Black. White.

- ERNEST MURPHY. J. P. CADMAN.  
1. P. to K. 4th. 1. P. to K. 4th.  
2. Kt. to K. B. 3rd. 2. Kt. to Q. B. 3rd.  
3. B. to Q. Kt. 5th. 3. P. to Q. R. 3rd.  
4. B. takes Kt.

Mr. Murphy commends this move as the very best  
way of continuing the attack:

5. Castles. 4. Q. takes B.

The attack may now play P. to Q. 4th, and if the  
defence take the P. retake it with the Q.

6. P. to Q. 4th. 5. B. to Q. 3rd;  
7. Kt. takes P. 6. P. takes P.  
7. P. to K. R. 3rd

Wasting time.

8. Kt. to Q. B. 3rd. 8. Kt. to K. 2nd.  
9. P. to K. B. 4th. 9. Castles.  
10. P. to K. B. 5th. 10. B. to Q. B. 4th.  
11. P. to K. 3rd. 11. P. to K. B. 3rd.  
12. K. to R. 1st. 12. B. to Q. Kt. 3rd.  
13. Q. Kt. to K. 2nd. 13. B. takes Kt.  
14. B. takes B. 14. P. to Q. Kt. 3rd.  
15. P. to Q. B. 3rd. 15. Q. to K. 1st.  
16. Kt. to K. B. 4th. 16. B. to Q. 2nd.  
17. R. to K. B. 3rd. 17. Q. R. to Q. 1st.  
18. R. to K. Kt. 3rd. 18. P. to Q. 4th.  
19. Q. to K. Kt. 4th. 19. R. to K. B. 2nd.  
20. B. to K. 3rd. 20. K. to R. 2nd.  
21. Kt. to R. 5th. 21. Q. to K. Kt. 1st.  
22. Q. to K. B. 4th. 22. K. to R. 1st.

White here played B. to K. 3rd, when Black took  
Kt. P. with R. and White immediately surrendered.  
The move in the text is the best White could have  
adopted, but only prolongs the game.

23. Kt. takes Kt. P. 23. R. takes Kt.  
24. Q. takes R. P. (ch) 24. Q. to R. 2nd.  
25. R. takes K. 25. Q. takes Q.  
26. B. takes Q.

And wins easily.

The Canadian Illustrated News,

A WEEKLY JOURNAL of current events  
Literature, Science and Art, Agriculture and  
Mechanics, Fashion and Amusement.

Published every Saturday, at Montreal, Canada,  
By Geo. E. Desbarats.

Subscription, in advance, \$4.00 per an.,  
Single Numbers, 10 cents.  
Postage: 5 cents per quarter, payable in advance  
by subscribers at their respective Post Offices.  
The CANADIAN ILLUSTRATED NEWS, and  
THE FAVORITE will be sent to one address for  
one year for \$5.00.

CLUBS:

Every club of five subscribers sending a remittance  
of \$20, will be entitled to Six Copies for one year  
mailed to one address.

Montreal subscribers will be served by Carriers.  
Remittances by Post Office Order or Registered Letter  
at the risk of the Publisher.

Advertisements received, to a limited number at  
15 cents per line, payable in advance.

TO PRINTERS.

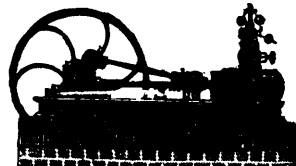
THE HIGHEST CASH PRICE paid for  
Old Type, or paid in Electrotype or Stereotype  
work. Apply at this office.

\$3.00 LORD BROUGHAM TELESCOPE.

Will distinguish the time by a church clock five miles  
a FLAGSTAFF and WINDOW BARS 10 MILES; landscape  
twenty miles distant, and will define the SATELLITES  
of JUPITER and the PHASES OF VENUS, &c., &c. This  
extraordinary CHEAP AND POWERFUL glass is of the  
best make and possesses ACHROMATIC LENSES and is  
equal to a telescope costing \$20.00. NO STRUTS OR  
TOURIST should be without one. Sent Post free to all  
parts in the Dominion of Canada on receipt of price,  
\$3.00

H. SANDERS, Optician, &c.

163 St. James Street, Montreal.  
Illustrated Catalogue 16 pages sent free for one  
stamp.



EAGLE FOUNDRY, MONTREAL

GEORGE BRUSH, PROPRIETOR.

ESTABLISHED, 1823.

Manufacturer of Steam Engines, Steam Boilers and  
machinery generally.  
Agent for JUDSON'S PATENT GOVERNOR. St.  
1-26-xj

AVOID QUACKS.

A victim of early indiscretion, causing nervous  
debility, premature decay, &c., having tried in vain  
every advertised remedy, has discovered a simple  
means of self-cure, which he will send free to his  
fellow-sufferers. Address, J. H. REEVES, 78 Nassau  
St., New York. 2-13-1 an

LEGGO & CO.,

Leggotypers,  
Electrotypers,  
Stereotypers,  
Engravers

Chromo and  
Photo-Lithographers,  
Photographers,  
and  
General Printers by Steam Power.

Office: No. 1, Place d'Armes Hill, } Montreal.  
Works: No. 319, St. Antoine Street, }

Maps, Plans, Book Illustrations, Show-Cards,  
Labels, Commercial work of every description,  
executed in a superior style, at unprecedentedly low  
prices.

THE NEW CANADIAN WEEKLY.

THE FAVORITE

THE BEST AND CHEAPEST PAPER IN AMERICA.

16 pages WEEKLY for \$2.00 per annum.

"THE FAVORITE" PLAN.—We have planned out a  
paper which gives more reading for less money than any  
paper in America. We propose to furnish a better, fuller,  
more interesting, more carefully edited paper, at \$2  
per annum, than any imported paper which costs you  
\$3.00. While giving the preference to Canadian  
productions, we will give, from advance sheets, the best  
stories published in England and the United States.  
We will have the latest and most interesting items  
relative to the Farm, the Garden, the Household,  
Scientific and Literary intelligence, a column of Wit  
and Humor, &c. Get a sample number at the News-  
dealers, or write for one. It will be sent free.

"THE FAVORITE" SHAPE.—The elegant 16-page  
quarto form we have adopted, while more convenient for  
reading in sheets, is also better adapted for binding,  
and contains fifty per cent more reading matter than  
the unwieldy 8-page folios heretofore in vogue. At  
the year's end, each subscriber will have a volume of  
332 PAGES, containing the equivalent of at least 30 fifty-  
cent volumes, at a cost of

ONLY TWO DOLLARS.

"THE FAVORITE" ISSUE.—"THE FAVORITE" will be  
issued:—  
1. In weekly numbers of 16 pages at 5 cents.  
2. In monthly parts of 64 or 80 pages, in a handsome  
cover, at 20 cents.  
N. B.—Subscribers at \$2.00 will be served with the  
weekly issue for one year, unless they specify that  
they prefer the monthly.

"THE FAVORITE" MAXIM.—Canada for the Canadians—  
whether by birth or adoption. Let us help each other,  
if we aspire to be a Nation. "The Favorite" is a  
genuine Canadian enterprise.—Canadian in its concep-  
tion, its plan, its execution,—written, edited, printed  
by Canadians, on Canadian paper, with Canadian type.

GIVE IT YOUR SUPPORT.  
Club terms and sample numbers mailed free on  
application.

Great cash inducements to clubbers.  
"THE FAVORITE" is sold by all News-dealers and  
on all Railway trains.

The CANADIAN ILLUSTRATED NEWS, and  
THE FAVORITE will be sent to one address for  
one year for \$5.00.

ADDRESS, GEO. E. DESBARATS,

Publisher of THE FAVORITE, the Canadian  
Illustrated News, L'Opinion Publique and  
L'Etandard National.

No. 1, Place d'Armes Hill, and 319 St. Antoine St.,  
MONTREAL.

THE FAVORITE is printed and published by Geo. E.  
DESBARATS, 1 Place d'Armes Hill, and 319 St.  
Antoine St., Montreal, Dominion of Canada.