

## FOR SALE

The Pure Bred Percheron

**Othello [2602] 70517**

Foaled April 24, 1909. Guaranteed sound and a sure foal getter. For Price and full particulars apply to

**W. SWITZER**

WAPELLA

SAS K.



The Man behind the Graham kind of  
**Percheron & Belgian Stallions**

That are so Popular

Sold in the three provinces on liberal terms and guarantee. Prospective buyers invited to call on or write to

**J. H. Graham**

313 20th St. W. (near Barry Hotel)

**Saskatoon, Sask.**

## Glencarnock Stock Farm

Aberdeen-Angus Cattle, Yorkshire and Berkshire Swine, Suffolk Sheep, Young stock, all ages, both sexes, for sale. Booking orders for Spring Pigs, Yorkshire and Berkshire, at \$15.00 each.

**JAMES D. MCGREGOR** Brandon, Man.

## POLAND-CHINA PIGS

The big, easy-keeping kind that weigh and pay. Early spring pigs for sale, \$8.00 each, \$15.00 a pair, \$21.00 a trio (not related). Eggs for hatching, from Pure-bred Turkeys, Ducks, Chickens, etc. If you want first-class stock, send me your order. I will treat you RIGHT—Mrs. Maggie Rief, St. Peter, Minnesota, U.S.A.

## Suffolk Punch Stallions

The finest imported examples of the breed. Purchased from the most famous breeders of Great Britain. Thoroughly acclimatized. Also registered yearling Suffolk studs.

**S. PEARSE, EAST END P.O., SASK.**

## Percheron and Belgian Stallions and Mares

To Exchange for choice unincumbered Farm Lands desirably located. You have too much land and not enough stock to farm successfully.

**W. L. DECLOW, Importer, Cedar Rapids, Ia.**

## HARNESS

Write for our new Illustrated Mail Order Catalog. Our Goods and Prices are Right. TRY US

**J. MURRAY & COMPANY**

HARNESS MANUFACTURERS  
180 Princess Street, Winnipeg, Man.

By reference to the advertisement of the Farmers' Co-operative Lumber Co. in this issue, it will be seen prices have almost been cut in two when compared to those formerly paid the retailer. This company show their faith by allowing examination on arrival of car, only requesting an advance as good faith—  
Advertisement

### Delay Is Dangerous

Waste is dangerous, no matter how small in any business. If you have the power to follow after the binder the better, and if not as soon as possible with an implement that will cut the stubble, weeds, volunteer crop and leaving a fine loose mulch surface so when plowed under decay is rapid and the soil layer settles down in the subsoil compactly. The loose mulch layer now on the bottom fills up all the spaces between the laps of the furrows. Thus the capillary action between the soil particles is very quickly re-established, preventing drying out.

Now we have the out-of-sight part of our seed bed ready to turn under. Here we are accomplishing three purposes. The surface being in a mellow condition will be receptive to and hold moisture. We also are cleaning the land by turning down weed and volunteer crop, while at the same time bringing up other seeds to the surface that will start growing previous to frosts. If you have the power, plow to a depth of from 6 to 8 inches, but in doing so exercise judgment, as some sub-soils are less deficient in humus than others. Where poor sub-soil must be molested, bring it to the surface in small quantities or use a narrow foot cultivator, which will only score and not bring to the surface.

Can it be that too many farmers have still got the desert dry and drear under their four inches of cultivated surface? Perhaps you have made a large basin in your field for the purpose of retaining water. The bottom of that few inches you have been plowing is just as hard, only you had not the basin shaped and the moisture was lost.

Paul Gerlach, prize winner at the World's Dry Land Farming Congress, emphasizes the importance of preparing the land so that it will be receptive in time of rainfall and surface cultivating to retain moisture.

### Make a Level Seed Bed

If you have time in the fall, prepare your summer-fallow in the same manner as previously mentioned, keeping in view the preservation of moisture. Then after seeding is over, or as soon as possible, go over it with the cultivator. Land is seldom summer-fallowed any oftener than once in three or four years, during which time a number of old furrows, badger hills, etc., are noticeable. The old furrows are noticeable in two ways. The straw is shorter, with small heads and poorer sample of grain, and the binder will shake while crossing; then, while cultivating, use all means that will level, and you have accomplished two purposes. With an unlevel seed bed you cannot have an even crop. Then leave until the land shows surface growth, except there be a heavy rain fall or drought; after which surface cultivate, crossing in opposite way to that previously. This will break up any crust, arrest evaporation, and prevent cracking.

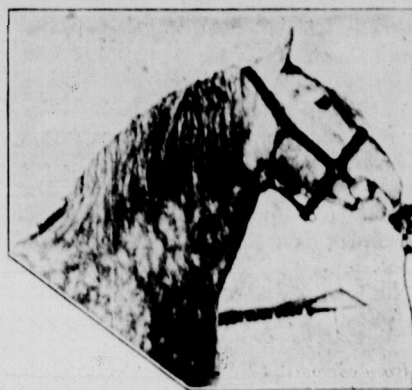
Hatch and Hazelwood, on elementary agriculture, state that "weeds rob plants of moisture, serve as a breeding ground for insects, and shade the plants from much needed sunlight."

In considering the matter of stubble, the farmer should decide whether he would cut all his grain as close to the surface as barley is generally cut, to save turning under so much loose straw, or cut it higher and dispose of the heavy stubble by fire.

### PLUM CULTURE IN CANADA

The subject of plum culture is treated in a bulletin of seventy-two pages issued by the Department of Agriculture, at Ottawa. The information presented has been largely derived from the experience gained in connection with plum growing at the Central Experimental Farm during the past twenty-five years. In this bulletin, information is given as to the best methods of preparing the soil for a plum orchard, with particulars also as to the planting and subsequent care of the trees. Instructions are given as to methods of pruning, grafting and on many other topics relating to this branch of the fruit industry. Lists of varieties of plum suitable for planting in different parts of Canada are given, with descriptions as to the character.

## Clydesdales - Percherons - Belgians



### Special Offering of HIGH CLASS STALLIONS

Are you in the market for a first class draft stallion? We can show you a better selection of big, heavy boned, extra well bred stallions of the above breeds at our stables, North Battleford, Sask., than you can find anywhere else in Western Canada. Take advantage of our special offer and terms. We can suit you or your community if you are in need of a good stallion. Write to our Manager, Mr. James Brooks, North Battleford, Sask., or to

**VANSTONE & ROGERS, 320 Sterling Bank, Winnipeg**

## BROOKSIDE HOLSTEINS

Bull Calves ready for Spring service, sired by our champion bull Sir Pieter de Riverside, whose three nearest dams average over 25 lbs. of butter in 7 days, and 87 lbs. of milk per day. Some choice females, due to freshen shortly, as well as stock of all ages.

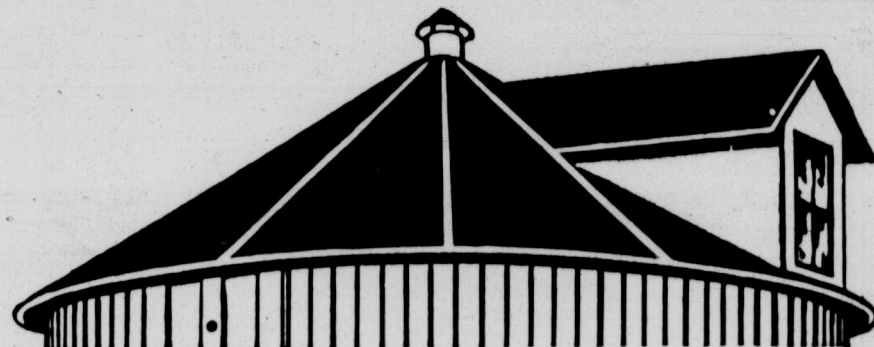
**MICHENER BROS.**

**BROOKSIDE STOCK FARM, RED DEER, ALTA.**

## Alfalfa Seed

The car of seed imported by the Brandon Alfalfa Seed Syndicate has arrived. The seed was grown in the Black Hills District of North Dakota and is reliable in every respect. This car was imported by the Syndicate of Brandon Business Men in order to give the farmers an opportunity of getting reliable seed at absolute cost. Every farmer should grow Alfalfa. Commence this year by sowing a few acres. Book your order at once. Price 20c per pound, F.O.B. Brandon. Booklet on "How to Grow It" sent on application. Address all letters to—

**A. R. McDIARMID, Secretary, Brandon, Man.**  
**or J. D. MCGREGOR, President, Brandon, Man.**



## An Ideal Green Feed Silo on Your Farm Means

*Better feed, cheaper feed  
more milk, larger profits*

THE most prosperous and successful dairymen in Canada all agree that one of the first, and certainly the most profitable, investments that a cow owner should make, is the erection of a good silo.

Leading dairymen also testify that the *Ideal Green Feed Silo* can be depended upon to give entire satisfaction. It has proved its worth by years of use upon Canadian farms.

The materials and construction throughout of the *Ideal Green Feed Silos* are of the very best, and everyone contemplating the erection of a silo this year will find it to his advantage to get our specifications and prices before contracting for the erection of a silo.

*Write for New Silo Catalog*

**DE LAVAL DAIRY SUPPLY CO., Ltd.**

LARGEST MANUFACTURERS OF DAIRY SUPPLIES IN CANADA

Exclusive Canadian distributors of the "World Standard" De Laval Cream Separators  
**MONTREAL PETERBORO WINNIPEG VANCOUVER**